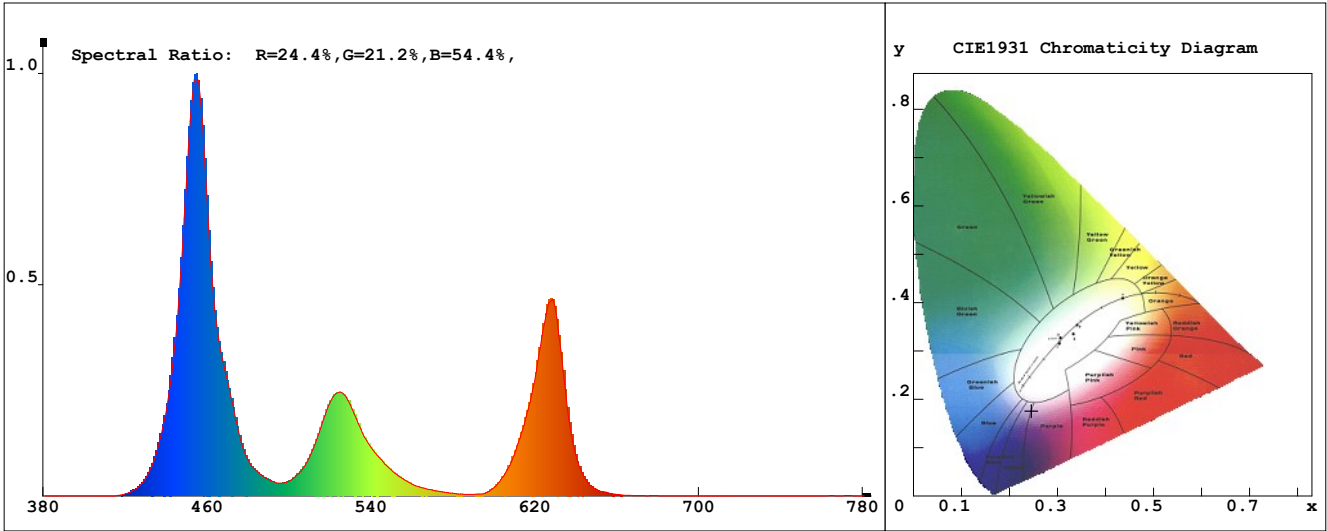


LED Test Report

Product Mark

Product Type : ORRGB-F52-8100R1 RGB
 Temperature : 'C
 Operator : -
 Remark:

Manufacturer : -
 Humidity : -%
 Test Date : 2025-02-12



Chroma Parameters

Chro.Coor.:x=0.2456 y=0.1761 u=0.2125 v=0.2286 duv=-0.0401
 CCT:100000K Dominant Wave.:449.6nm Purity:49.8% Centre Wave:454.0nm
 Flux RGB Ratio:R=29.2%,G=59.8%,B=10.9% Peak Wave:453.8nm Half Width:15.9nm

Rendering Index:Ra= 29.4 CRI= 85.6

R1 =-9 R2 =37 R3 =79 R4 =16 R5 =19 R6 =37 R7 =72 R8 =-17
 R9 =-292 R10=-26 R11=-5 R12=41 R13=-4 R14=76 R15=-36
 PPF:7.679umol/s (400-700nm) PRF:1.8mW (400-700nm) PAR:1.4mW (400-700nm)

Photo Parameters

Flux:347.78lm Effi.:28.4lm/W Radiant:1794.1mW Iv:0.0mcd
 Scotopic Flux:1434.6Plm Effi.:0.0Plm/W S/P:4.1
 Efficiency:0.00 Effi Level:A++ (EU 874-2012) Photon Flux:7685.990umol/s (380-780nm)

Ele. Parameters

Forward Current:If=1019.0mA Reverse Voltage:Vr=5.00V
 Forward Voltage:Vf=12.00V Reverse Current:Ir=0.00uA
 Power:P=12.240W

Instrument state

Instrument:Lisun LMS-8000 Integral Time: 62.121ms VPeak: 13960
 VDark: 1321 Scan Range: 380-780nm Product ID: 201508924

IES TM-30-2015 Test Report

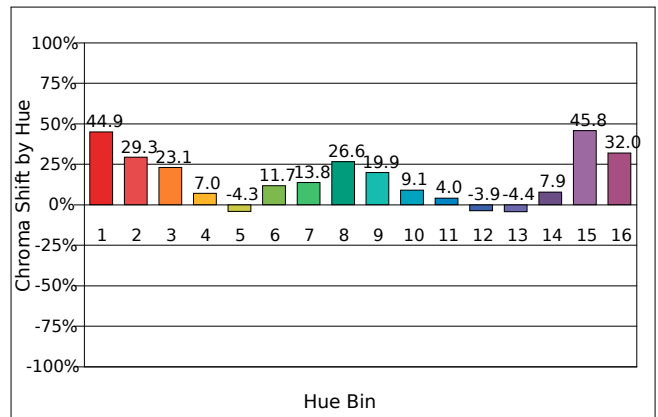
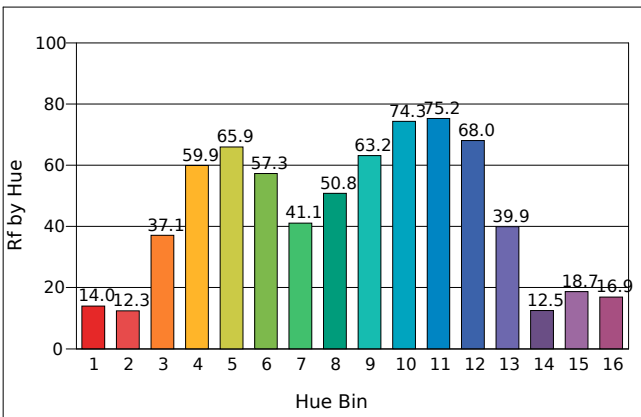
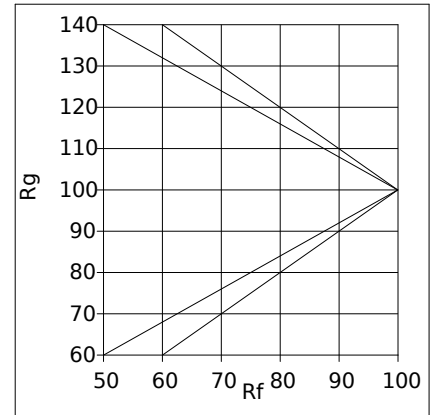
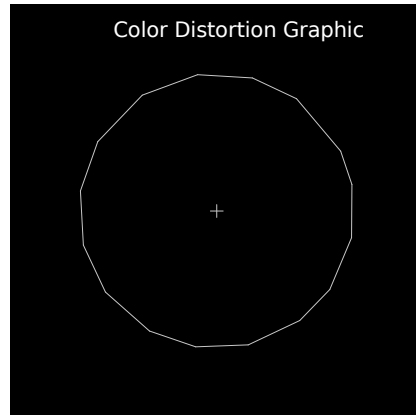
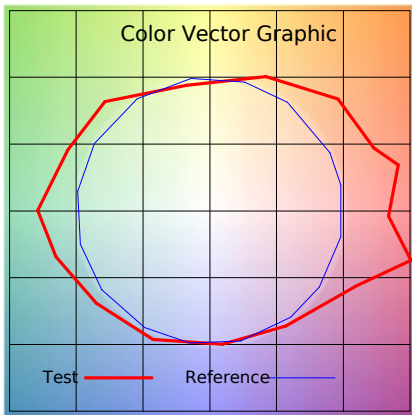
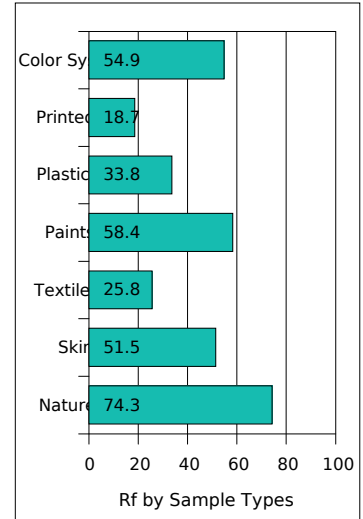
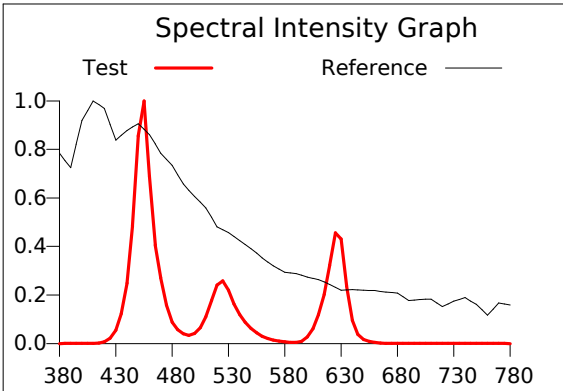
Product Mark

Product Type : ORRGB-F52-8100R1 RGB
 Temperature : 'C
 Operator : -
 Remark :

Manufacturer : -
 Humidity : -%
 Test Date : 2025-02-12

Rf: 47.5 CCT(K): 100000u': 0.2125
 Rg: 133.1 LER: 184.5 Duv: -0.0401 v': 0.2286

Hue Bin	Rf	Graphic Shifts (%)	
		Chroma	Hue
1	14.0	44.9%	6.6%
2	12.3	29.3%	-15.1%
3	37.1	23.1%	-30.2%
4	59.9	7.0%	-15.0%
5	65.9	-4.3%	4.1%
6	57.3	11.7%	21.3%
7	41.1	13.8%	15.0%
8	50.8	26.6%	19.8%
9	63.2	19.9%	5.9%
10	74.3	9.1%	6.3%
11	75.2	4.0%	10.2%
12	68.0	-3.9%	24.6%
13	39.9	-4.4%	35.6%
14	12.5	7.9%	54.4%
15	18.7	45.8%	54.6%
16	16.9	32.0%	22.1%



IES TM-30-2015 Test Report

Product Mark

Product Type : ORRGB-F52-810OR1 RGB

Manufacturer : -

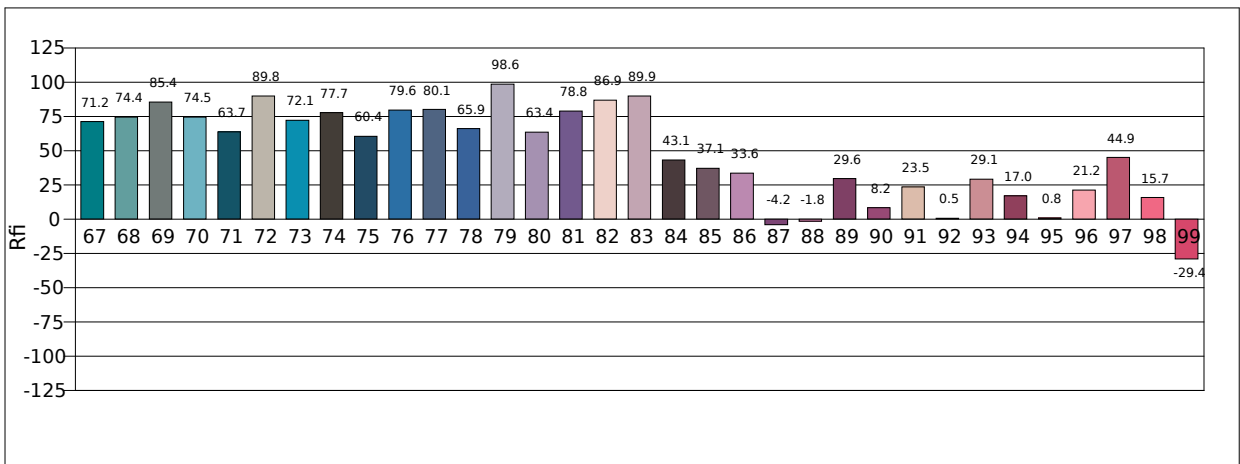
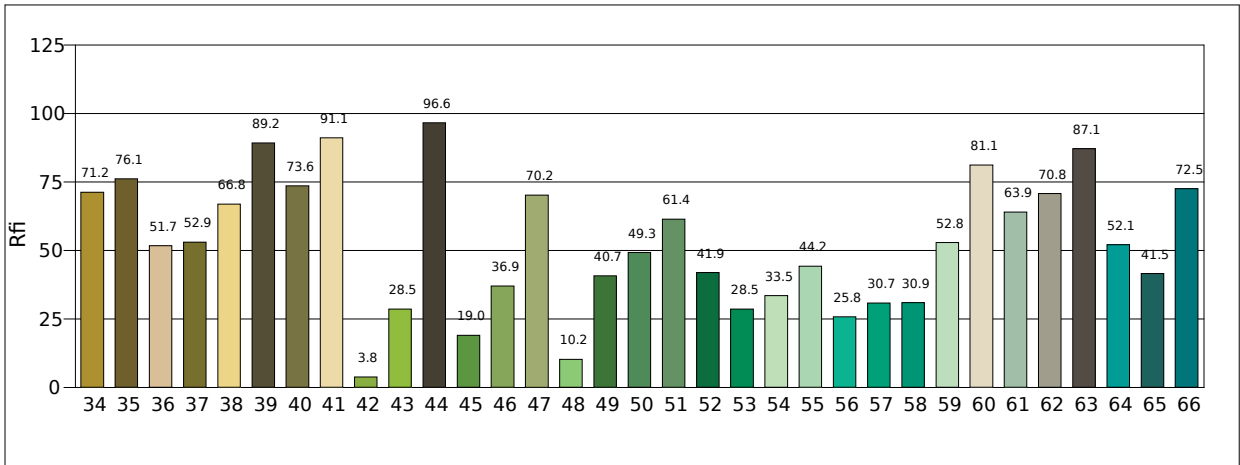
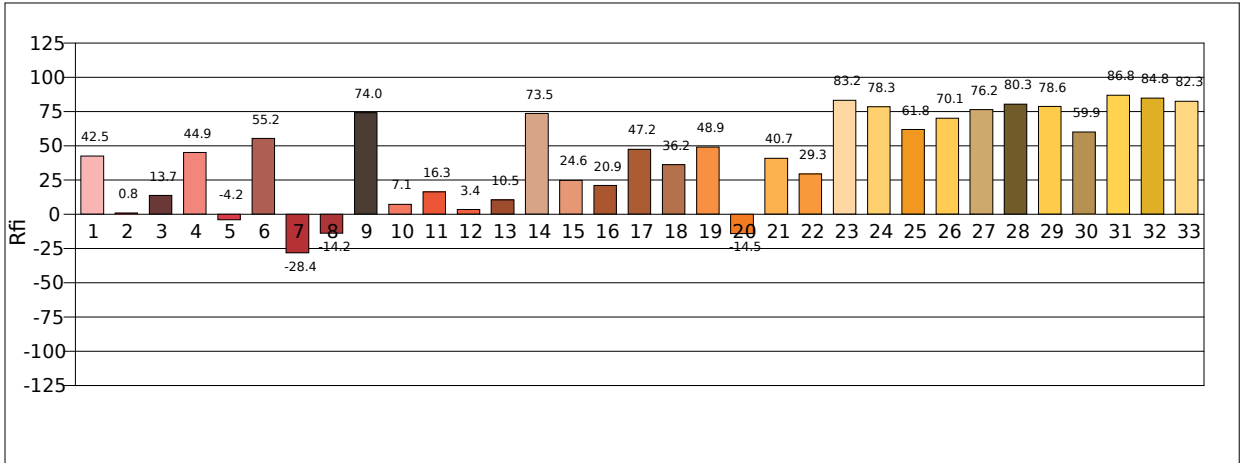
Temperature : 'C

Humidity : -%

Operator : -

Test Date : 2025-02-12

Remark :

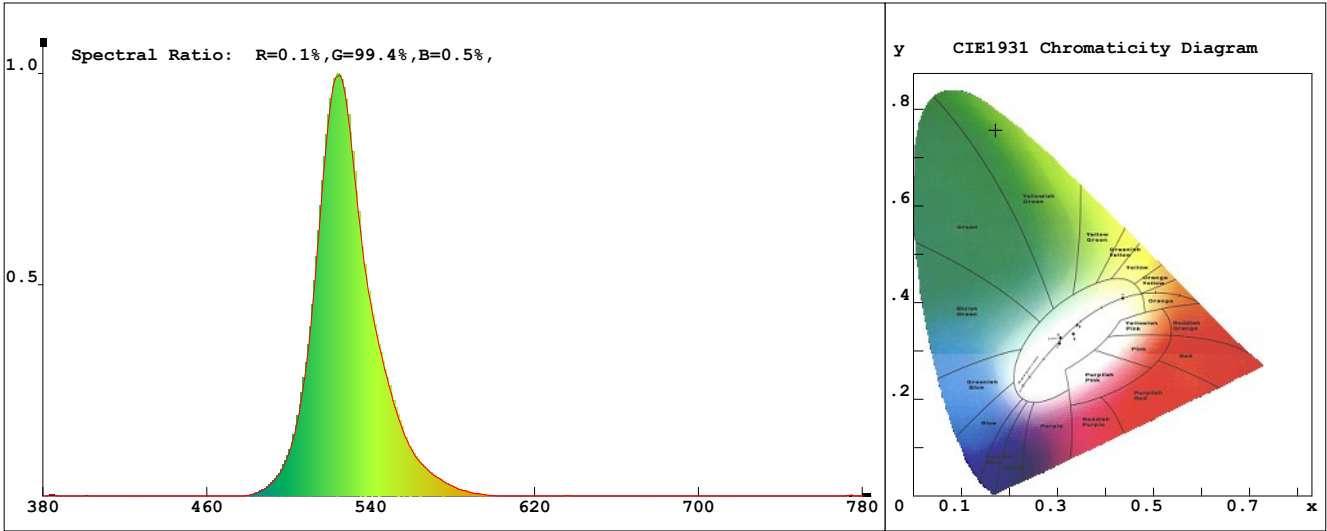


LED Test Report

Product Mark

Product Type : ORRGB-F52-810OR1 G
 Temperature : 'C
 Operator : -
 Remark :

Manufacturer : -
 Humidity : -%
 Test Date : 2025-02-12



Chroma Parameters

Chro.Coor.:x=0.1712 y=0.7568 u=0.0583 v=0.3868 duv=0.1608
 CCT: 7671K Dominant Wave.:529.6nm Purity:89.3% Centre Wave:524.5nm
 Flux RGB Ratio:R=0.0%,G=99.9%,B=0.1% Peak Wave:522.6nm Half Width:25.7nm

Rendering Index:Ra=-36.0 CRI=112.6

R1 =-40 R2 =-22 R3 =-45 R4 =-78 R5 =-15 R6 =-27 R7 =-20 R8 =-40
 R9 =-373 R10=-135 R11=-111 R12=-52 R13=-48 R14=26 R15=-37
 PPF:1.791umol/s (400-700nm) PRF:0.4mW (400-700nm) PAR:0.3mW (400-700nm)

Photo Parameters

Flux:232.48lm Effi.:90.5lm/W Radiant:406.2mW Iv:0.0mcd
 Scotopic Flux:601.6Plm Effi.:0.0Plm/W S/P:2.6
 Efficiency:0.00 Effi Level:A++ (EU 874-2012) Photon Flux:1792.520umol/s (380-780nm)

Ele. Parameters

Forward Current:If=214.0mA Reverse Voltage:Vr=5.00V
 Forward Voltage:Vf=12.00V Reverse Current:Ir=0.00uA
 Power:P=2.571W

Instrument state

Instrument:Lisun LMS-8000 Integral Time: 184.874ms VPeak: 13544
 VDark: 1351 Scan Range: 380-780nm Product ID: 201508924

IES TM-30-2015 Test Report

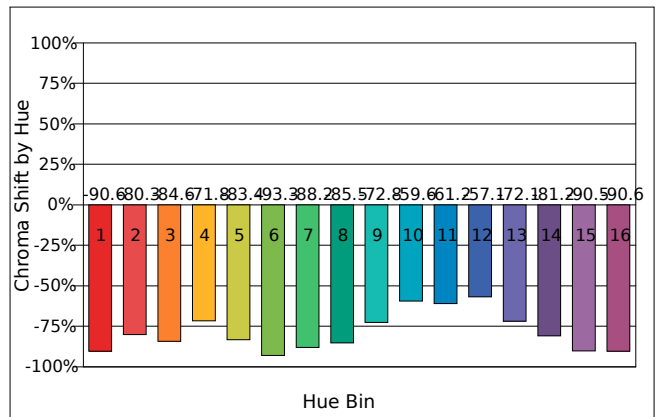
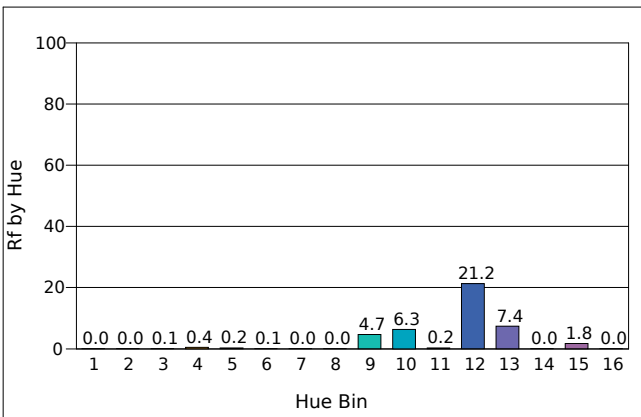
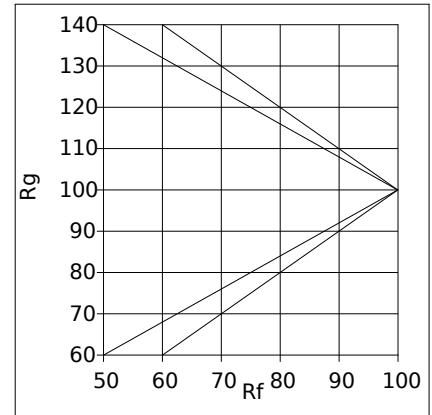
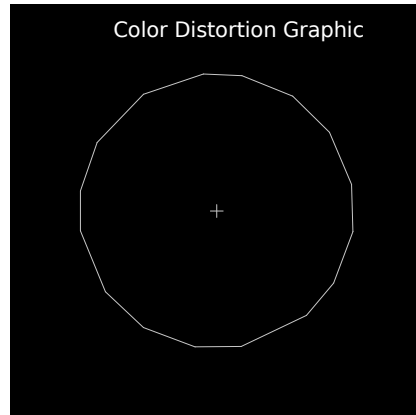
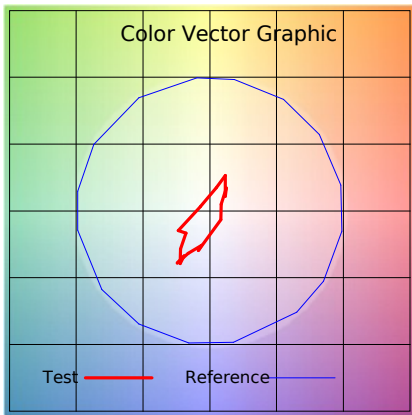
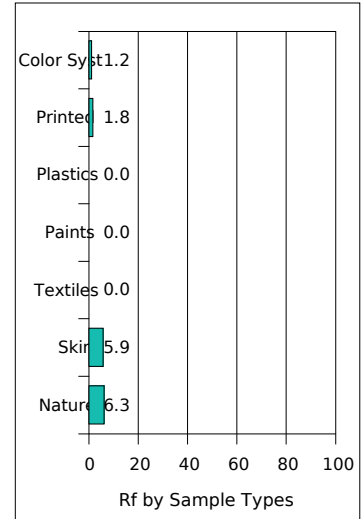
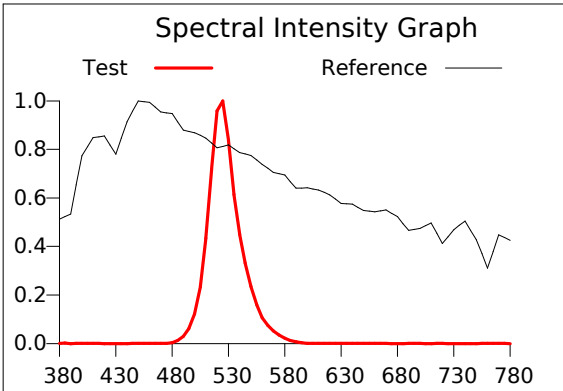
Product Mark

Product Type : ORRGB-F52-8100R1 G
 Temperature : 'C
 Operator : -
 Remark :

Manufacturer : -
 Humidity : -%
 Test Date : 2025-02-12

Rf: 0.1 CCT(K): 7671 u': 0.0583
 Rg: 2.8 LER: 526.0 Duv: 0.1608 v': 0.3868

Hue Bin	Rf	Graphic Shifts (%)	
		Chroma	Hue
1	0.0	-90.6%	3.5%
2	0.0	-80.3%	5.5%
3	0.1	-84.6%	-4.1%
4	0.4	-71.8%	-7.5%
5	0.2	-83.4%	1.7%
6	0.1	-93.3%	6.8%
7	0.0	-88.2%	18.4%
8	0.0	-85.5%	14.9%
9	4.7	-72.8%	29.0%
10	6.3	-59.6%	16.4%
11	0.2	-61.2%	-0.1%
12	21.2	-57.1%	-20.1%
13	7.4	-72.1%	-20.2%
14	0.0	-81.2%	-31.4%
15	1.8	-90.5%	-33.0%
16	0.0	-90.6%	-9.3%



IES TM-30-2015 Test Report

Product Mark

Product Type : ORRGB-F52-8100R1 G

Manufacturer : -

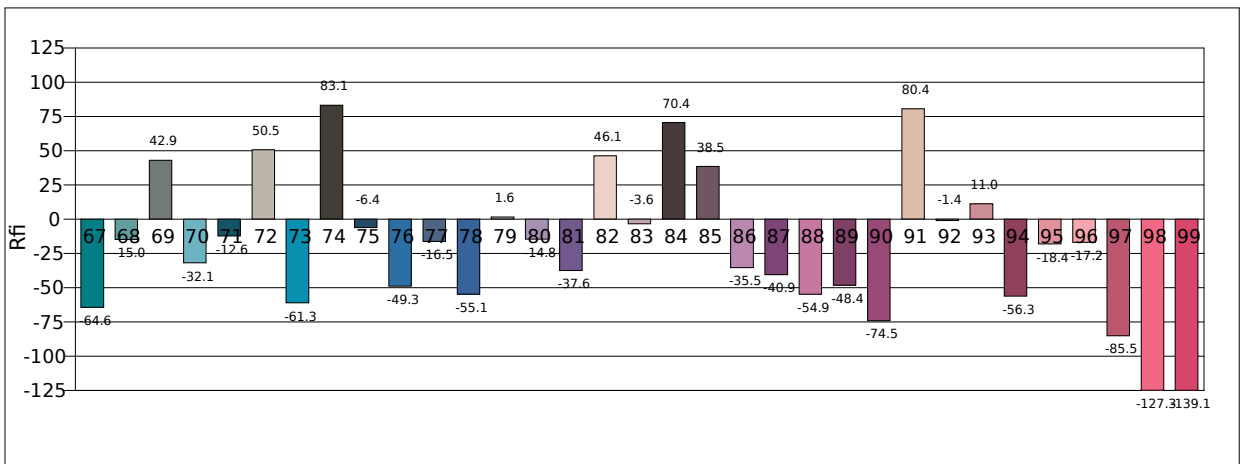
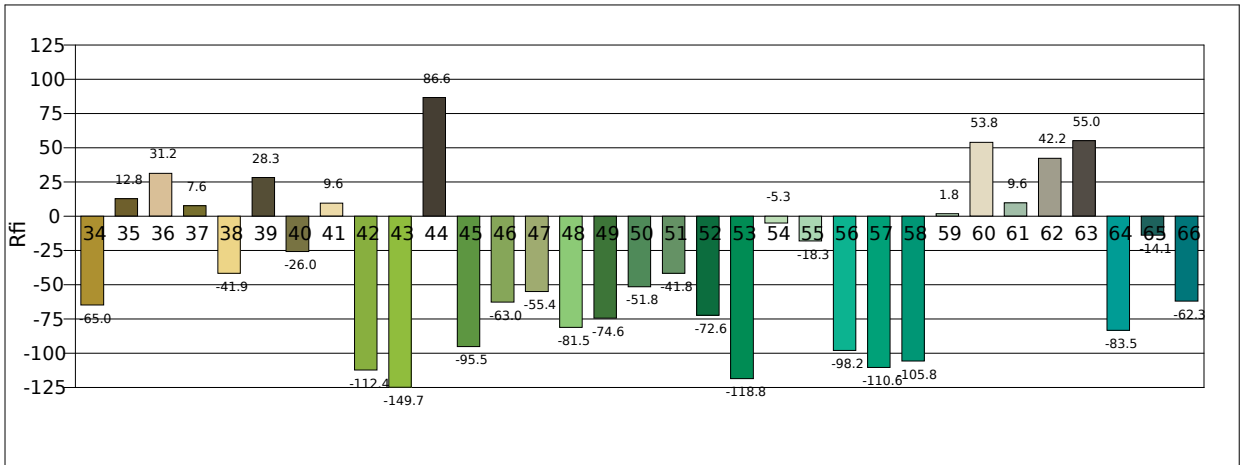
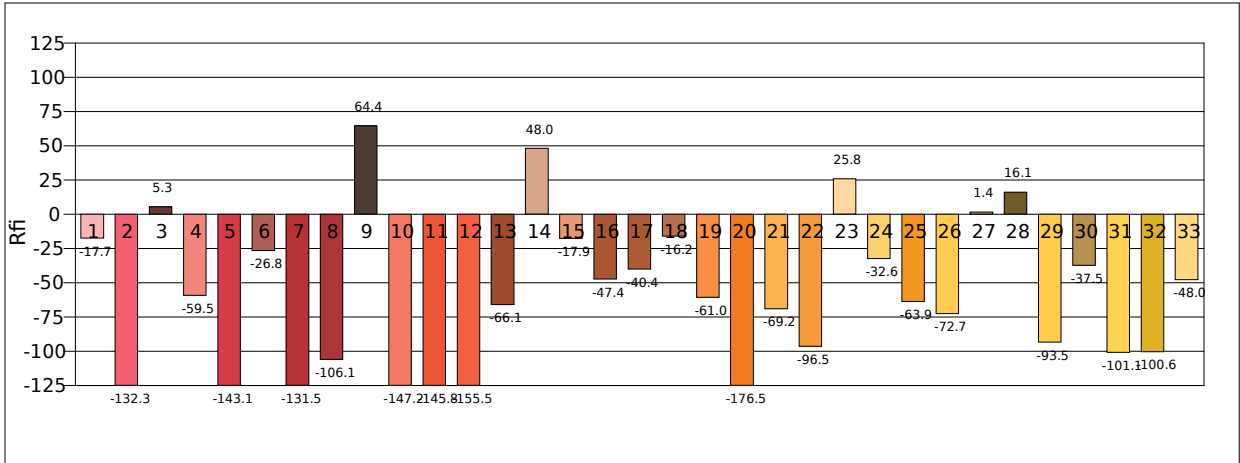
Temperature : 'C

Humidity : -%

Operator : -

Test Date : 2025-02-12

Remark :

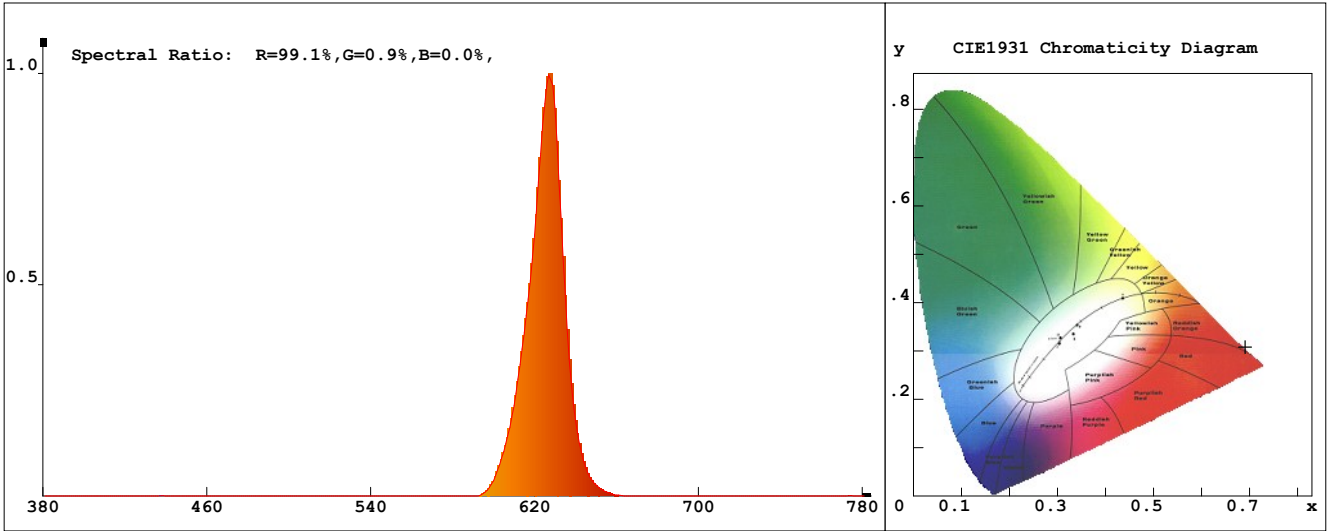


LED Test Report

Product Mark

Product Type : ORRGB-F52-8100R1 R
 Temperature : 'C
 Operator : -
 Remark :

Manufacturer : -
 Humidity : -%
 Test Date : 2025-02-12



Chroma Parameters

Chro.Coor.:x=0.6910 y=0.3084 u=0.5196 v=0.3479 duv=-0.0006
 CCT: 1315K Dominant Wave.:620.0nm Purity:99.9% Centre Wave:625.2nm
 Flux RGB Ratio:R=98.3%,G=1.7%,B=0.0% Peak Wave:626.5nm Half Width:17.0nm

Rendering Index:Ra=-20.9 CRI=104.6

R1 =-39 R2 =61 R3 =2 R4 =-82 R5 =-46 R6 =53 R7 =-7 R8 =-109
 R9 =-341 R10=50 R11=-92 R12=26 R13=-9 R14=35 R15=-77
 PPF:2.394umol/s (400-700nm) PRF:0.5mW (400-700nm) PAR:0.5mW (400-700nm)

Photo Parameters

Flux:102.35lm Effi.:16.9lm/W Radiant:459.1mW Iv:0.0mcd
 Scotopic Flux:5.3Plm Effi.:0.0Plm/W S/P:0.1
 Efficiency:0.00 Effi Level:A++ (EU 874-2012) Photon Flux:2395.660umol/s (380-780nm)

Ele. Parameters

Forward Current:If=505.0mA Reverse Voltage:Vr=5.00V
 Forward Voltage:Vf=12.00V Reverse Current:Ir=0.00uA
 Power:P=6.060W

Instrument state

Instrument:Lisun LMS-8000 Integral Time: 145.047ms VPeak: 14648
 VDark: 1340 Scan Range: 380-780nm Product ID: 201508924

IES TM-30-2015 Test Report

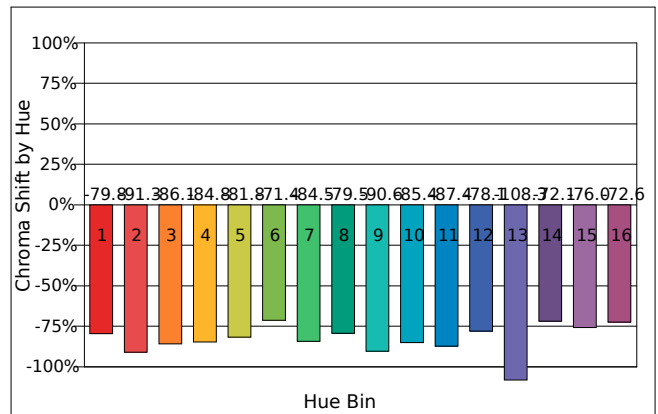
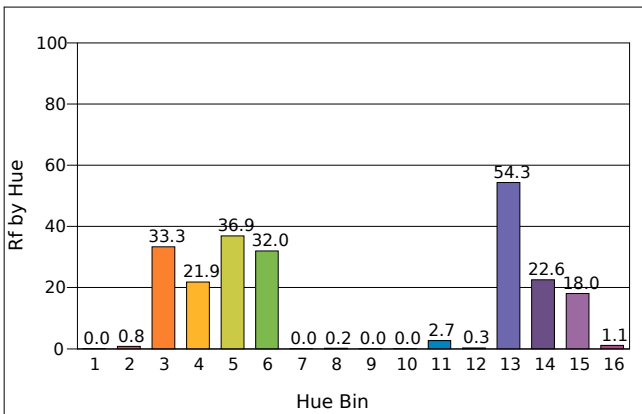
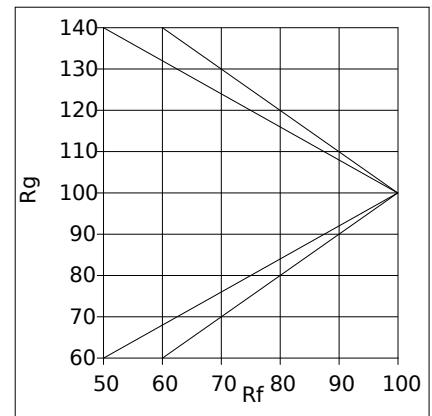
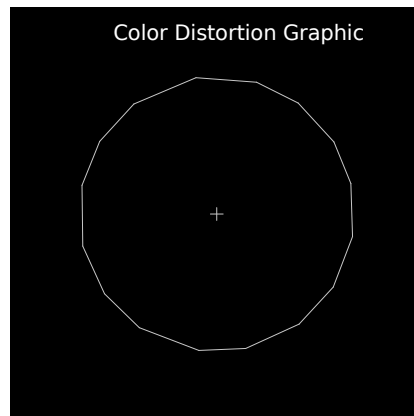
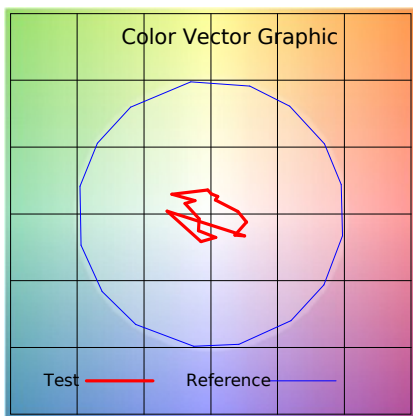
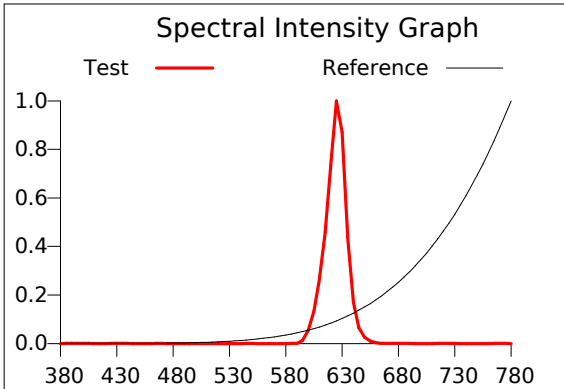
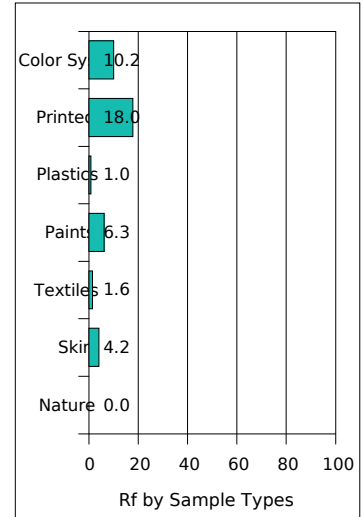
Product Mark

Product Type : ORRGB-F52-8100R1 R
 Temperature : 'C
 Operator : -
 Remark :

Manufacturer : -
 Humidity : -%
 Test Date : 2025-02-12

Rf: 0.7 CCT(K): 1315 u': 0.5196
 Rg: 2.2 LER: 229.0 Duv: -0.0006 v': 0.3479

Hue Bin	Rf	Chroma	Hue
1	0.0	-79.8%	-4.5%
2	0.8	-91.3%	10.5%
3	33.3	-86.1%	7.3%
4	21.9	-84.8%	12.3%
5	36.9	-81.8%	3.3%
6	32.0	-71.4%	10.6%
7	0.0	-84.5%	-5.0%
8	0.2	-79.5%	-2.7%
9	0.0	-90.6%	-1.9%
10	0.0	-85.4%	2.2%
11	2.7	-87.4%	13.5%
12	0.3	-78.1%	-9.8%
13	54.3	-108.3%	-33.4%
14	22.6	-72.1%	6.5%
15	18.0	-76.0%	-6.1%
16	1.1	-72.6%	-4.2%



IES TM-30-2015 Test Report

Product Mark

Product Type : ORRGB-F52-8100R1 R

Manufacturer : -

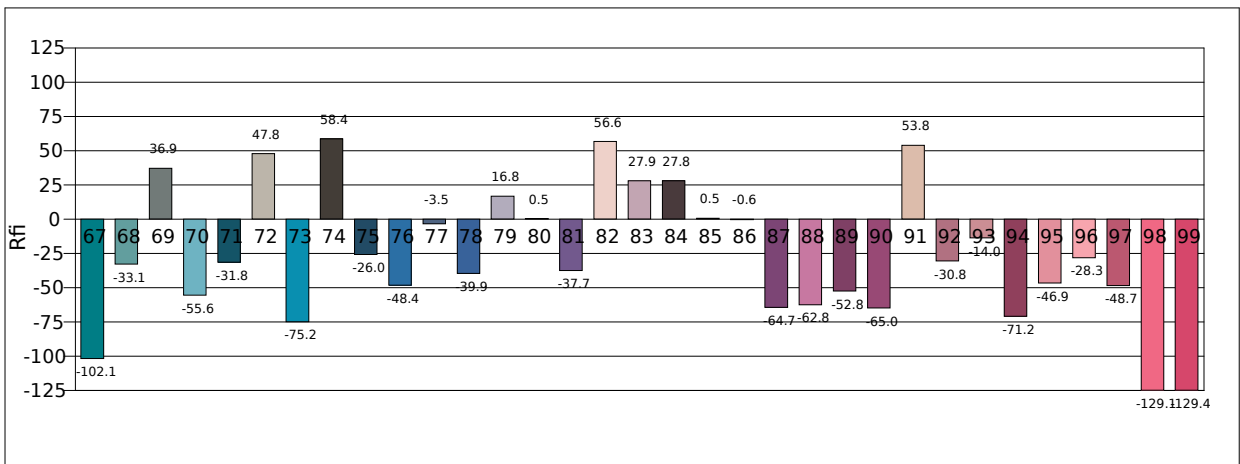
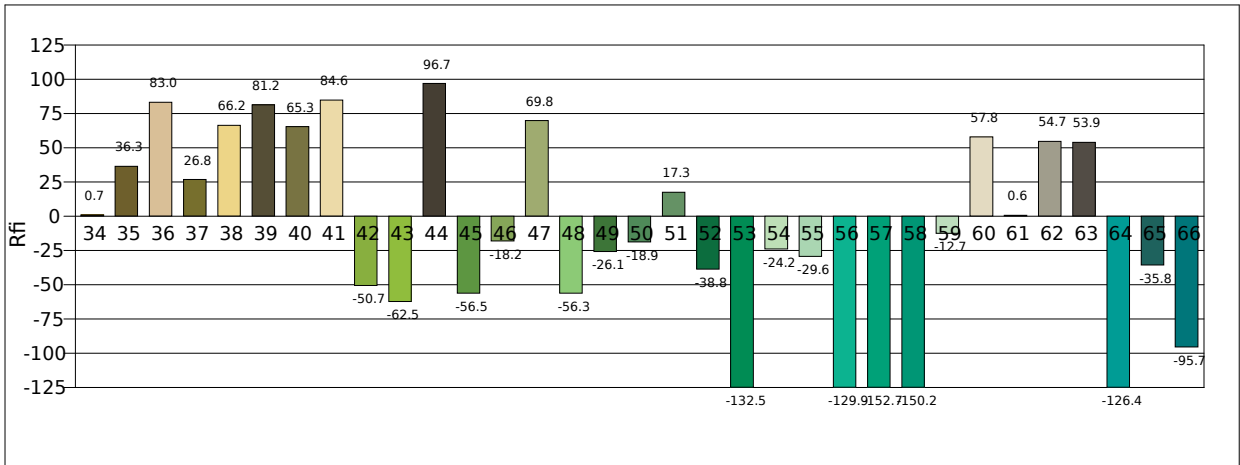
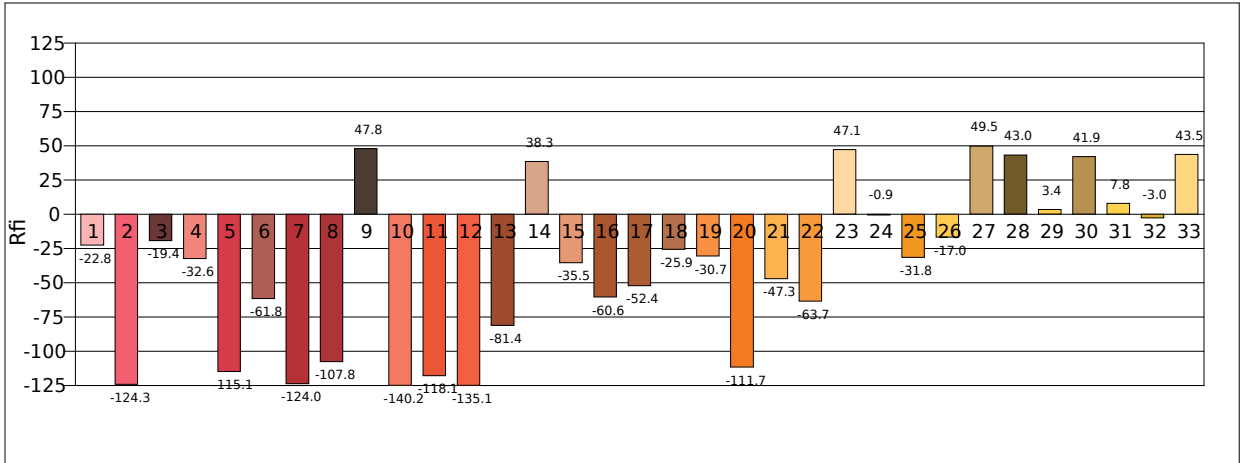
Temperature : 'C

Humidity : -%

Operator : -

Test Date : 2025-02-12

Remark :

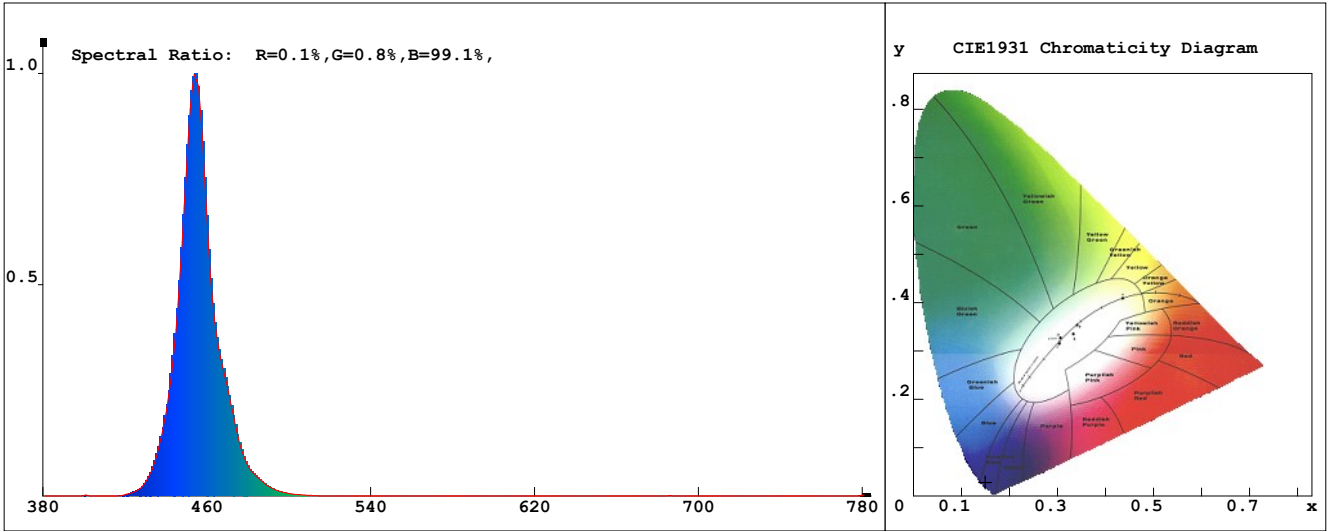


LED Test Report

Product Mark

Product Type : ORRGB-F52-8100R1 B
 Temperature : 'C
 Operator : -
 Remark:

Manufacturer : -
 Humidity : -%
 Test Date : 2025-02-12



Chroma Parameters

Chro.Coor.:x=0.1494 y=0.0279 u=0.1968 v=0.0552 duv=-0.0678
 CCT:100000K Dominant Wave.:457.2nm Purity:99.2% Centre Wave:453.3nm
 Flux RGB Ratio:R=0.1%,G=5.0%,B=94.9% Peak Wave:453.8nm Half Width:15.7nm

Rendering Index:Ra=-69.9 CRI=136.2

R1 =-22 R2 =-73 R3 =-175 R4 =-96 R5 =-5 R6 =-79 R7 =-66 R8 =-43
 R9 =-293 R10=-304 R11=-121 R12=-149 R13=-51 R14=-45 R15=-8
 PPF:4.104umol/s (400-700nm) PRF:1.1mW(400-700nm) PAR:0.8mW(400-700nm)

Photo Parameters

Flux:49.26lm Effi.:11.1lm/W Radiant:1078.7mW Iv:0.0mcd
 Scotopic Flux:1136.2Plm Effi.:0.0Plm/W S/P:23.1
 Efficiency:0.00 Effi Level:A++ (EU 874-2012) Photon Flux:4108.680umol/s(380-780nm)

Ele. Parameters

Forward Current:If=369.0mA Reverse Voltage:Vr=5.00V
 Forward Voltage:Vf=12.00V Reverse Current:Ir=0.00uA
 Power:P=4.430W

Instrument state

Instrument:Lisun LMS-8000 Integral Time: 59.159ms VPeak: 15016
 VDark: 1346 Scan Range: 380-780nm Product ID: 201508924

IES TM-30-2015 Test Report

Product Mark

Product Type : ORRGB-F52-8100R1 B

Manufacturer : -

Temperature : 'C

Humidity : -%

Operator : -

Test Date : 2025-02-12

Remark :

