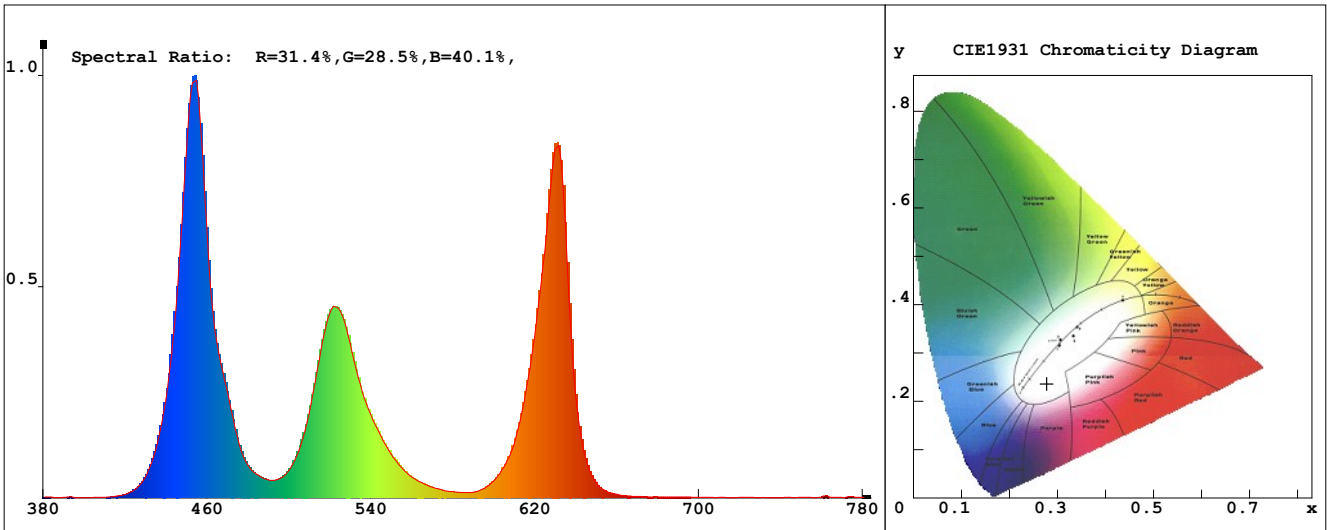


# LED Test Report

**Product Mark**

Product Type : ORRGB-F52-576OR2-W8 RGB      Manufacturer : -  
 Temperature : 'C      Humidity : -%  
 Operator : -      Test Date : 2025-02-12  
 Remark:



**Chroma Parameters**

Chro.Coord.:x=0.2780 y=0.2362 u=0.2107 v=0.2685 duv=-0.0282  
 CCT:19819K Dominant Wave.:452.1nm Purity:30.9% Centre Wave:452.9nm  
 Flux RGB Ratio:R=28.6%,G=65.0%,B=6.3% Peak Wave:453.0nm Half Width:16.1nm

**Rendering Index:Ra= 21.7 CRI= 85.9**

R1 =-9      R2 =58      R3 =48      R4 =-9      R5 =22      R6 =61      R7 =47      R8 =-44  
 R9 =-292      R10=23      R11=-37      R12=66      R13=5      R14=63      R15=-32  
 PPF:7.665umol/s (400-700nm)      PRF:1.7mW (400-700nm)      PAR:1.4mW (400-700nm)

**Photo Parameters**

Flux:404.56lm      Effi.:45.0lm/W      Radiant:1737.7mW      Iv:0.0mcd  
 Scotopic Flux:1309.6Plm      Effi.:0.0Plm/W      S/P:3.2  
 Efficiency:0.00      Effi Level:A++ (EU 874-2012)      Photon Flux:7700.380umol/s (380-780nm)

**Ele. Parameters**

Forward Current:If=384.0mA      Reverse Voltage:Vr=5.00V  
 Forward Voltage:Vf=23.39V      Reverse Current:Ir=0.00uA  
 Power:P=9.001W

**Instrument state**

Instrument:Lisun LMS-8000      Integral Time: 94.547ms      VPeak: 14616  
 VDark: 1079      Scan Range: 380-780nm      Product ID: 201508924

# IES TM-30-2015 Test Report

**Product Mark**

Product Type : ORRGB-F52-576OR2-W8 RGB

Manufacturer : -

Temperature : 'C

Humidity : -%

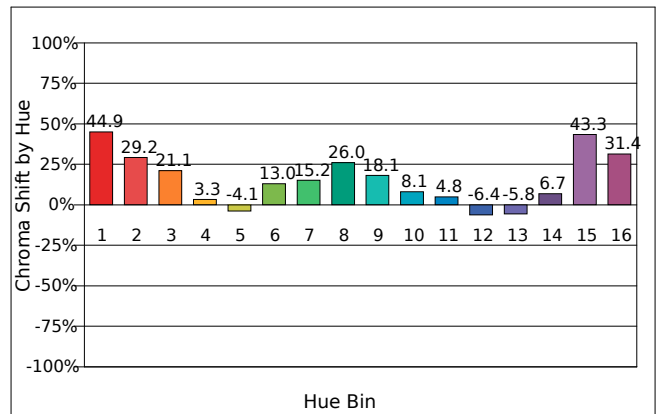
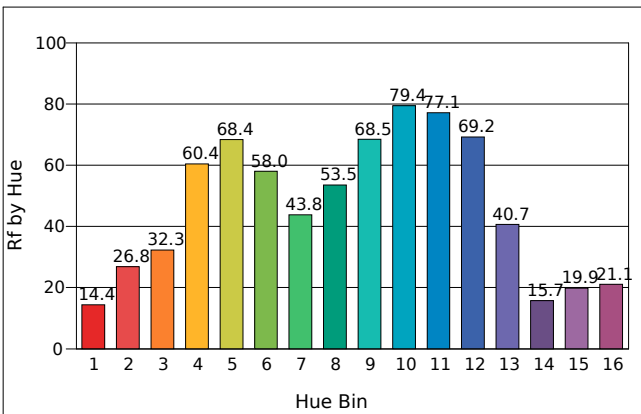
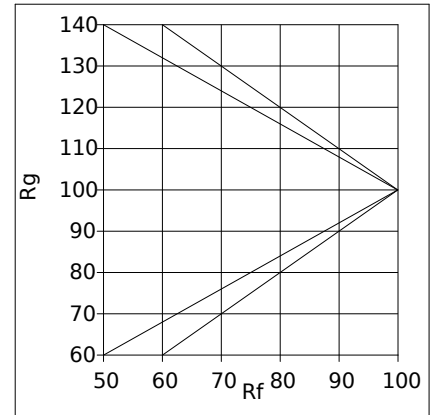
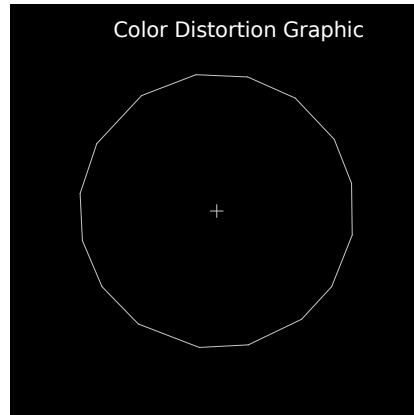
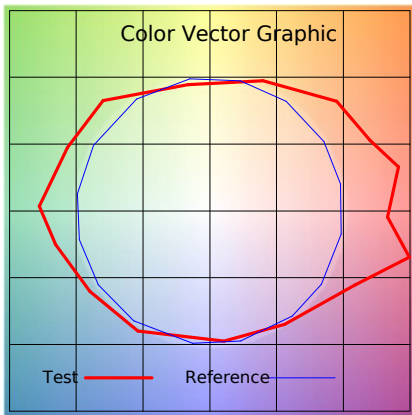
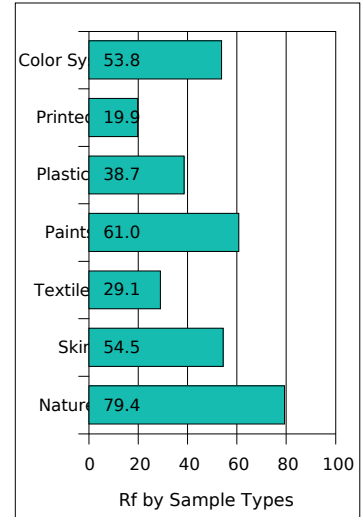
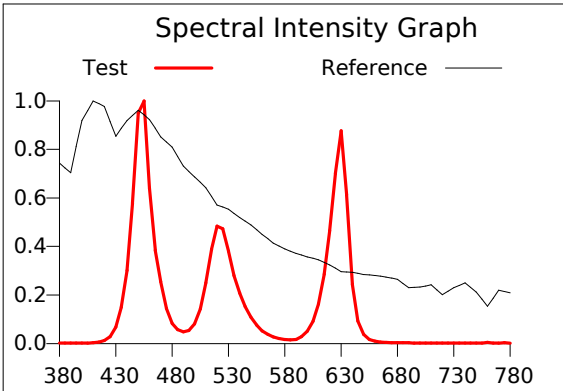
Operator : -

Test Date : 2025-02-12

Remark :

Rf: 49.9 CCT(K): 19819 u': 0.2107  
 Rg: 130.9 LER: 224.8 Duv: -0.0282 v': 0.2685

Hue Bin	Rf	Chroma	Hue
1	14.4	44.9%	4.5%
2	26.8	29.2%	-18.4%
3	32.3	21.1%	-31.4%
4	60.4	3.3%	-17.1%
5	68.4	-4.1%	2.1%
6	58.0	13.0%	21.8%
7	43.8	15.2%	11.9%
8	53.5	26.0%	14.7%
9	68.5	18.1%	0.2%
10	79.4	8.1%	0.8%
11	77.1	4.8%	6.9%
12	69.2	-6.4%	22.7%
13	40.7	-5.8%	34.9%
14	15.7	6.7%	52.0%
15	19.9	43.3%	53.5%
16	21.1	31.4%	19.4%



# IES TM-30-2015 Test Report

**Product Mark**

Product Type : ORRGB-F52-576OR2-W8 RGB

Manufacturer : -

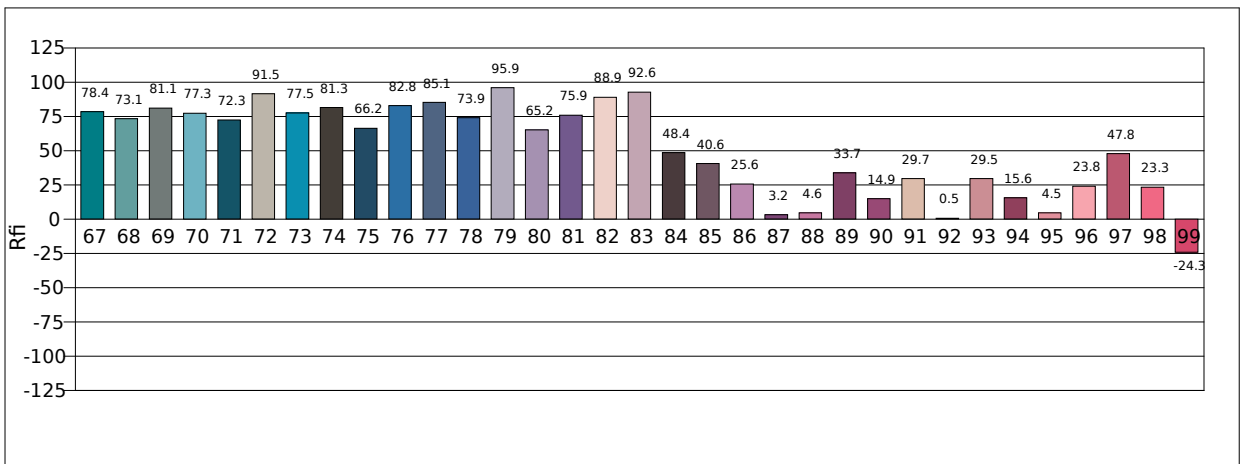
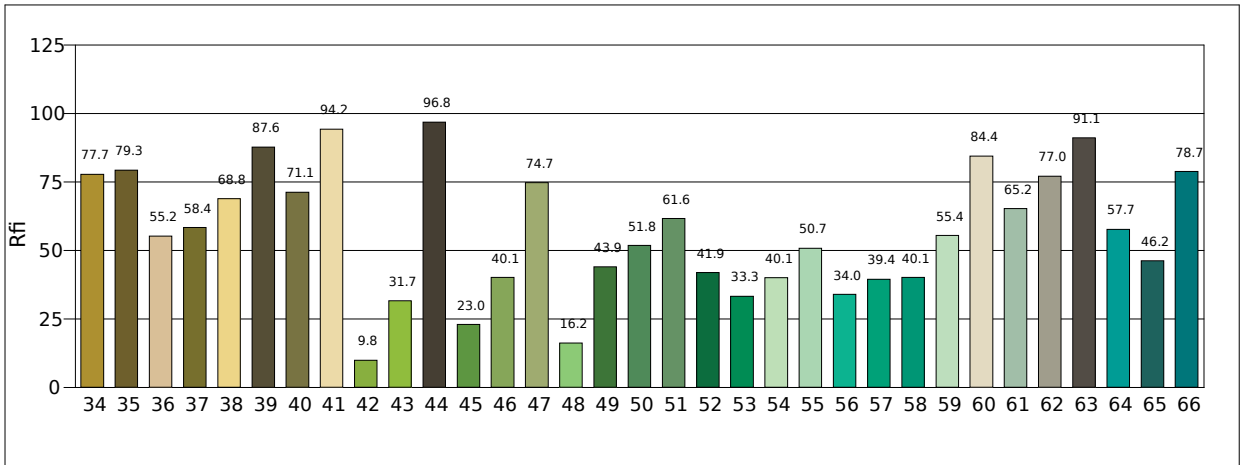
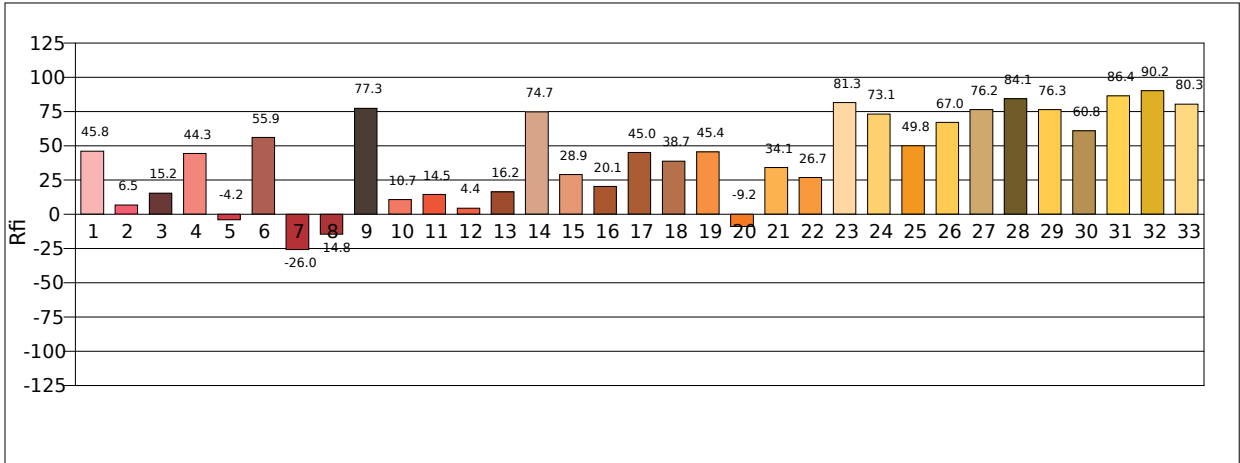
Temperature : 'C

Humidity : -%

Operator : -

Test Date : 2025-02-12

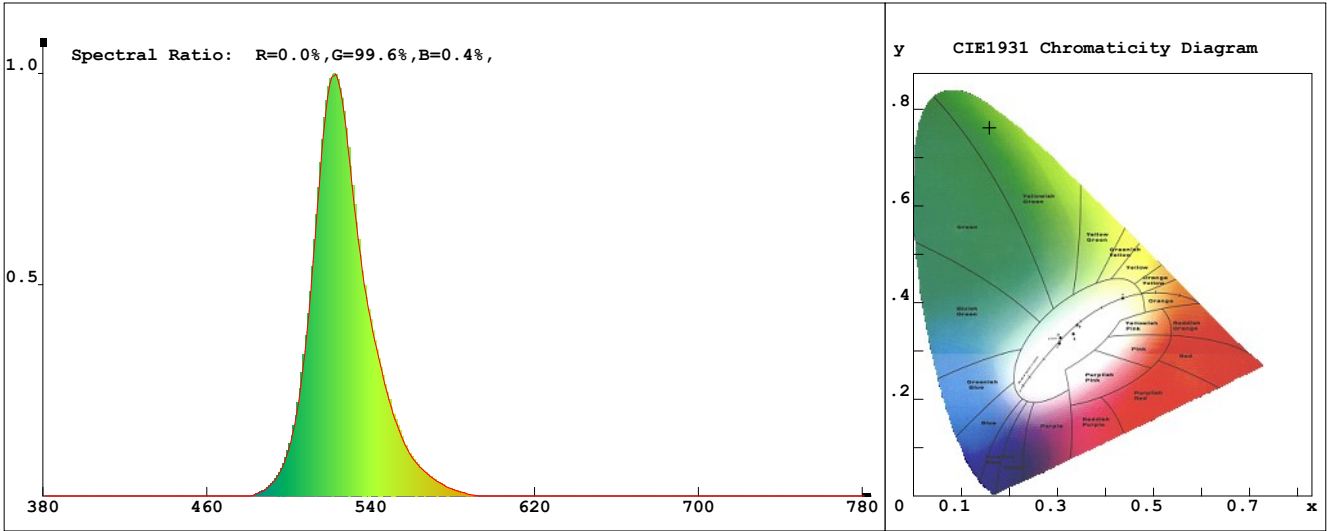
Remark :



# LED Test Report

**Product Mark**

Product Type : ORRGB-F52-576OR2-W8 G      Manufacturer : -  
 Temperature : 'C      Humidity : -%  
 Operator : -      Test Date : 2025-02-12  
 Remark :



**Chroma Parameters**

Chro.Coor.:x=0.1586 y=0.7618 u=0.0537 v=0.3866 duv=0.1647  
 CCT: 7830K Dominant Wave.:527.7nm Purity:88.8% Centre Wave:523.0nm  
 Flux RGB Ratio:R=0.0%,G=99.9%,B=0.1% Peak Wave:521.6nm Half Width:25.9nm

**Rendering Index:Ra=-37.7 CRI=113.6**

R1 =-41    R2 =-24    R3 =-49    R4 =-80    R5 =-15    R6 =-30    R7 =-22    R8 =-41  
 R9 =-373    R10=-139    R11=-113    R12=-55    R13=-50    R14=25    R15=-37  
 PPF:2.105umol/s (400-700nm)      PRF:0.5mW (400-700nm)      PAR:0.4mW (400-700nm)

**Photo Parameters**

Flux:275.13lm      Effi.:109.9lm/W      Radiant:478.5mW      Iv:0.0mcd  
 Scotopic Flux:746.6Plm      Effi.:0.0Plm/W      S/P:2.7  
 Efficiency:0.00      Effi Level:A++ (EU 874-2012)      Photon Flux:2104.900umol/s (380-780nm)

**Ele. Parameters**

Forward Current:If=107.0mA      Reverse Voltage:Vr=5.00V  
 Forward Voltage:Vf=23.39V      Reverse Current:Ir=0.00uA  
 Power:P=2.510W

**Instrument state**

Instrument:Lisun LMS-8000      Integral Time: 177.974ms      VPeak: 14936  
 VDark: 1121      Scan Range: 380-780nm      Product ID: 201508924

# IES TM-30-2015 Test Report

**Product Mark**

Product Type : ORRGB-F52-576OR2-W8 G

Manufacturer : -

Temperature : 'C

Humidity : -%

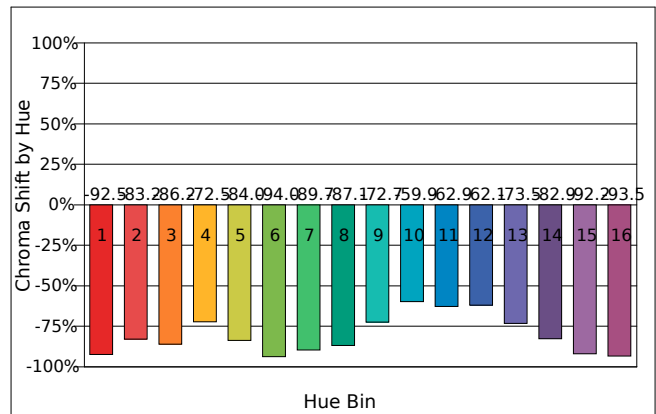
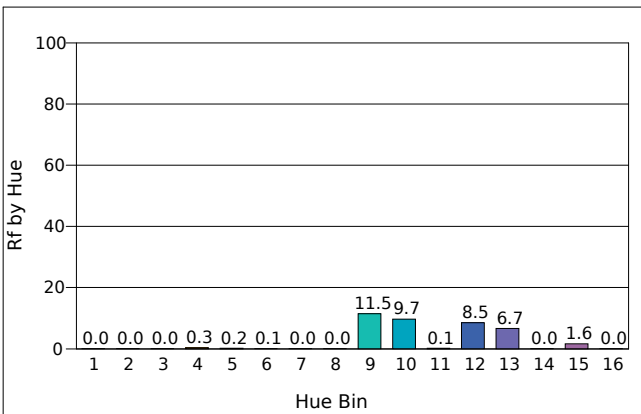
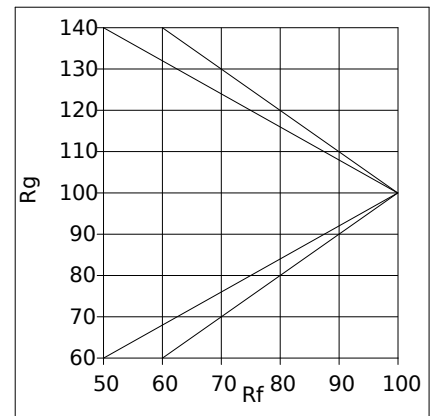
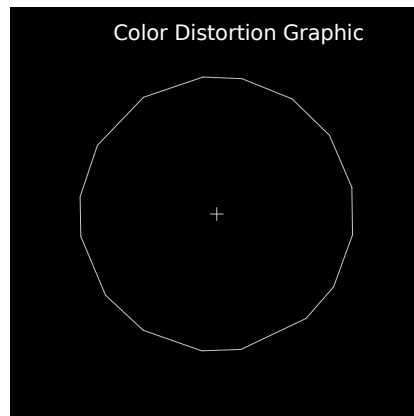
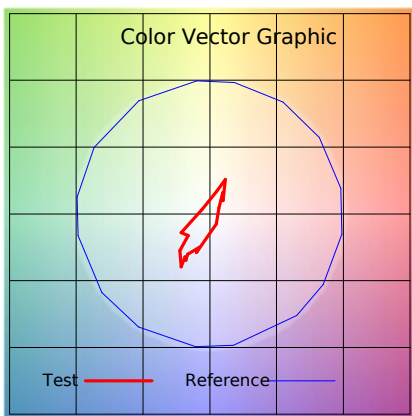
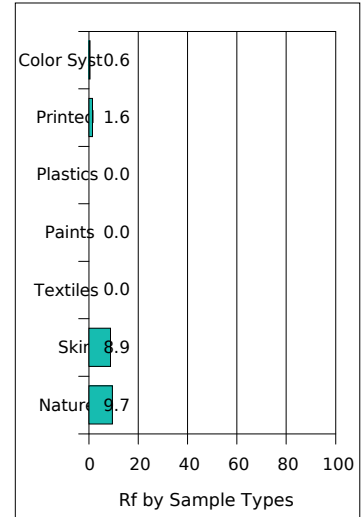
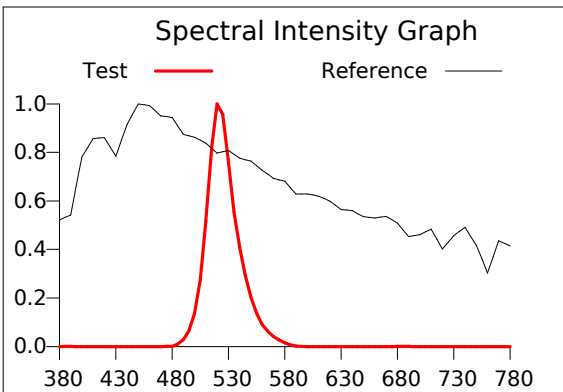
Operator : -

Test Date : 2025-02-12

Remark :

Rf: 0.1 CCT(K): 7830 u': 0.0537  
 Rg: 2.1 LER: 514.4 Duv: 0.1647 v': 0.3866

Hue Bin	Rf	Graphic Shifts (%)	
		Chroma	Hue
1	0.0	-92.5%	3.4%
2	0.0	-83.2%	6.0%
3	0.0	-86.2%	-3.6%
4	0.3	-72.5%	-7.5%
5	0.2	-84.0%	1.5%
6	0.1	-94.0%	5.8%
7	0.0	-89.7%	16.7%
8	0.0	-87.1%	12.0%
9	11.5	-72.7%	25.9%
10	9.7	-59.9%	16.9%
11	0.1	-62.9%	-0.3%
12	8.5	-62.1%	-19.5%
13	6.7	-73.5%	-20.2%
14	0.0	-82.9%	-32.2%
15	1.6	-92.2%	-32.9%
16	0.0	-93.5%	-10.6%



# IES TM-30-2015 Test Report

**Product Mark**

Product Type : ORRGB-F52-576OR2-W8 G

Manufacturer : -

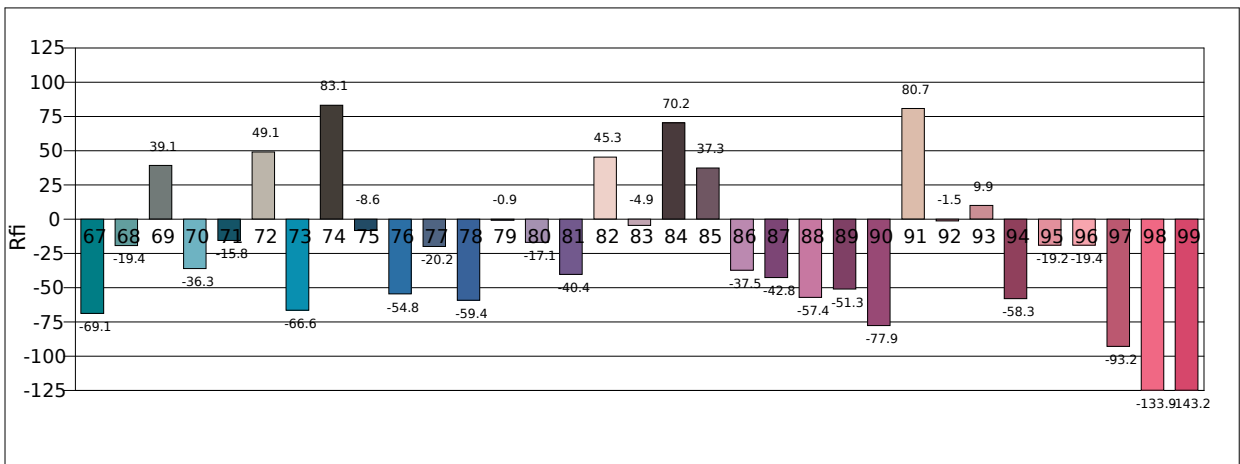
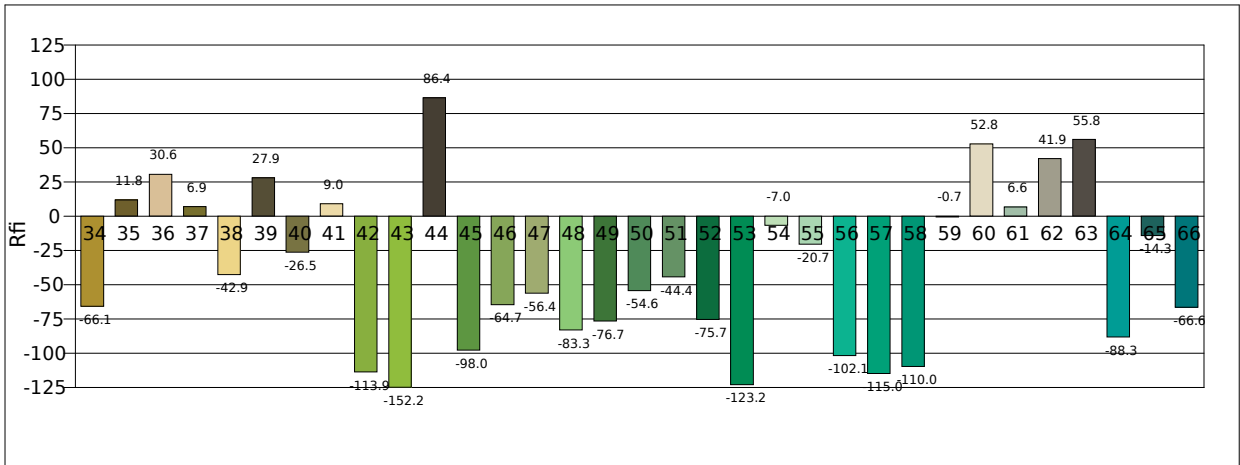
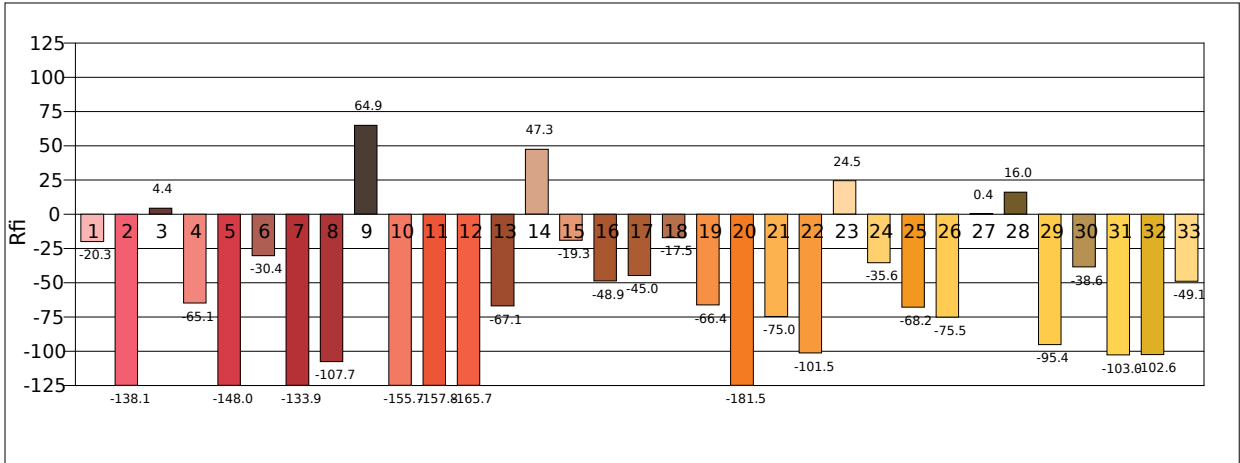
Temperature : 'C

Humidity : -%

Operator : -

Test Date : 2025-02-12

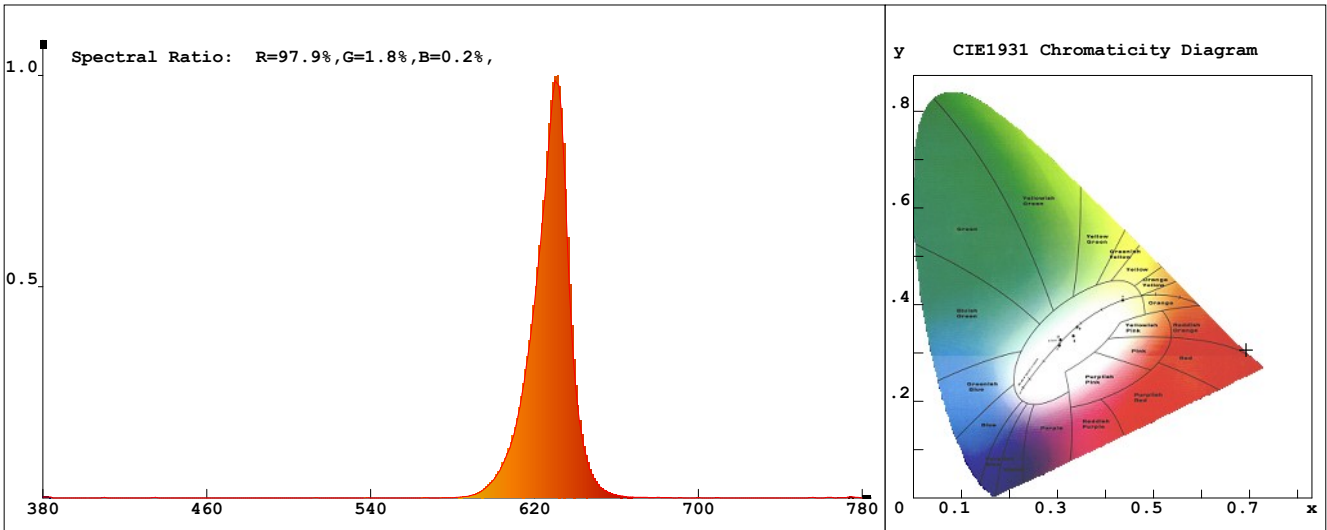
Remark :



# LED Test Report

**Product Mark**

Product Type : ORRGB-F52-576OR2-W8 R      Manufacturer : -  
 Temperature : 'C      Humidity : -%  
 Operator : -      Test Date : 2025-02-12  
 Remark :



**Chroma Parameters**

Chro.Coor.:x=0.6932 y=0.3064 u=0.5241 v=0.3475 duv=-0.0007  
 CCT: 1335K Dominant Wave.:621.0nm Purity:99.9% Centre Wave:628.0nm  
 Flux RGB Ratio:R=95.9%,G=4.1%,B=0.0% Peak Wave:629.6nm Half Width:16.4nm

**Rendering Index:Ra=-18.4 CRI= 98.6**

R1 =-55    R2 =41    R3 =28    R4 =-52    R5 =-19    R6 =49    R7 =-25    R8 =-114  
 R9 =-323    R10=26    R11=-67    R12=29    R13=-34    R14=51    R15=-84  
 PPF:2.907umol/s (400-700nm)      PRF:0.6mW (400-700nm)      PAR:0.5mW (400-700nm)

**Photo Parameters**

Flux:113.92lm      Effi.:25.4lm/W      Radiant:557.9mW      Iv:0.0mcd  
 Scotopic Flux:6.8Plm      Effi.:0.0Plm/W      S/P:0.1  
 Efficiency:0.00      Effi Level:A++ (EU 874-2012)      Photon Flux:2920.500umol/s (380-780nm)

**Ele. Parameters**

Forward Current:If=192.0mA      Reverse Voltage:Vr=5.00V  
 Forward Voltage:Vf=23.39V      Reverse Current:Ir=0.00uA  
 Power:P=4.510W

**Instrument state**

Instrument:Lisun LMS-8000      Integral Time: 118.106ms      VPeak: 14984  
 VDark: 1214      Scan Range: 380-780nm      Product ID: 201508924

# IES TM-30-2015 Test Report

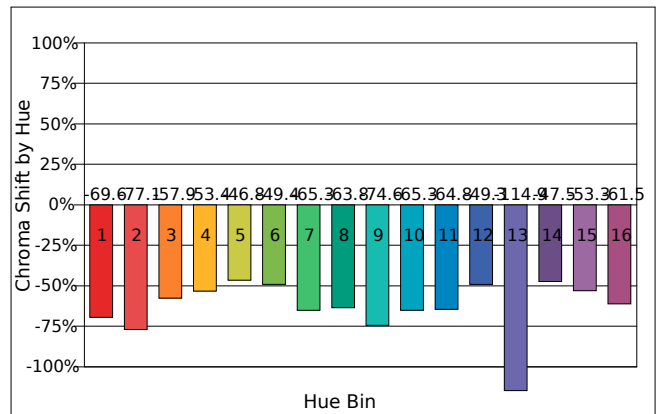
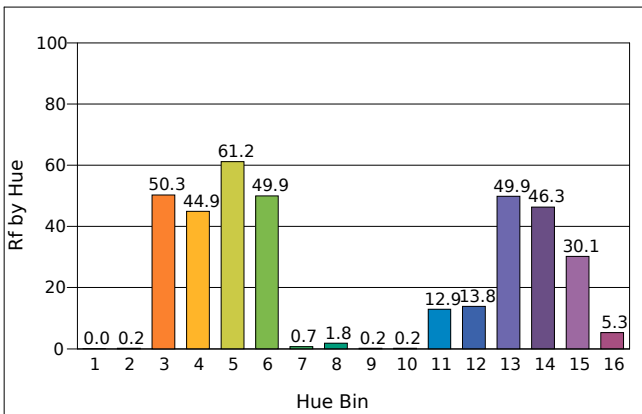
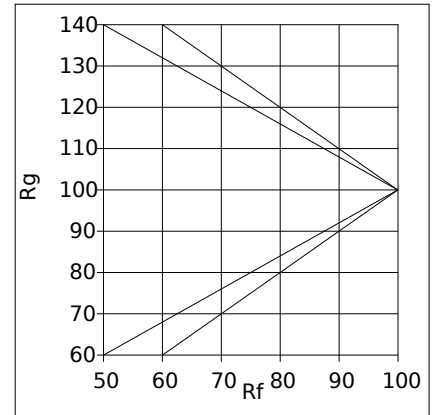
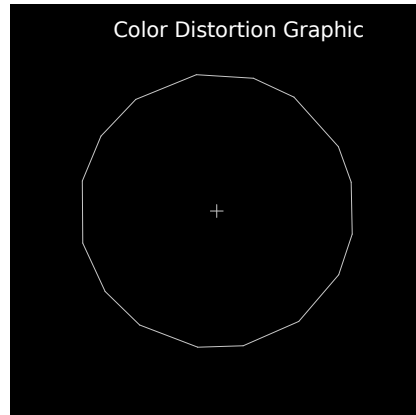
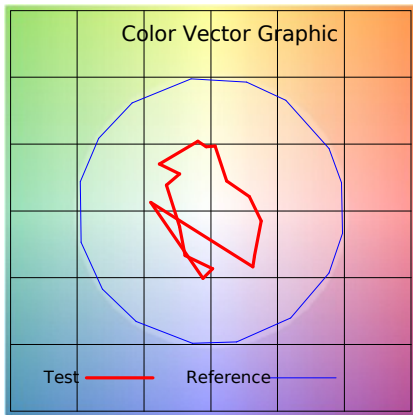
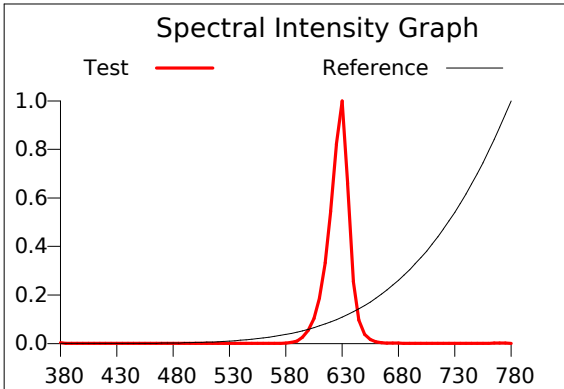
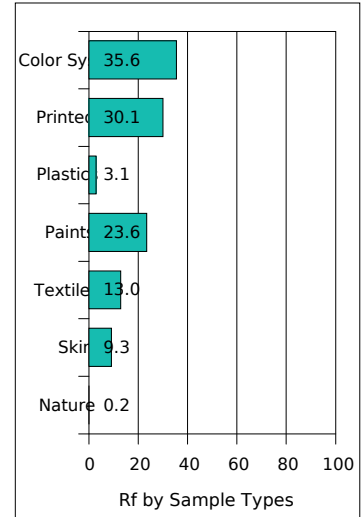
**Product Mark**

Product Type : ORRGB-F52-576OR2-W8 R  
 Temperature : 'C  
 Operator : -  
 Remark :

Manufacturer : -  
 Humidity : -%  
 Test Date : 2025-02-12

Rf: 5.1 CCT(K): 1335 u': 0.5241  
 Rg: 13.0 LER: 213.5 Duv: -0.0007 v': 0.3475

Hue Bin	Rf	Chroma	Hue
1	0.0	-69.6%	3.5%
2	0.2	-77.1%	22.4%
3	50.3	-57.9%	25.0%
4	44.9	-53.4%	20.2%
5	61.2	-46.8%	4.2%
6	49.9	-49.4%	8.6%
7	0.7	-65.3%	-11.6%
8	1.8	-63.8%	-10.0%
9	0.2	-74.6%	3.1%
10	0.2	-65.3%	13.4%
11	12.9	-64.8%	25.6%
12	13.8	-49.3%	-1.6%
13	49.9	-114.9%	-42.6%
14	46.3	-47.5%	-2.1%
15	30.1	-53.3%	-20.8%
16	5.3	-61.5%	-2.7%





# IES TM-30-2015 Test Report

**Product Mark**

Product Type : ORRGB-F52-576OR2-W8 R

Manufacturer : -

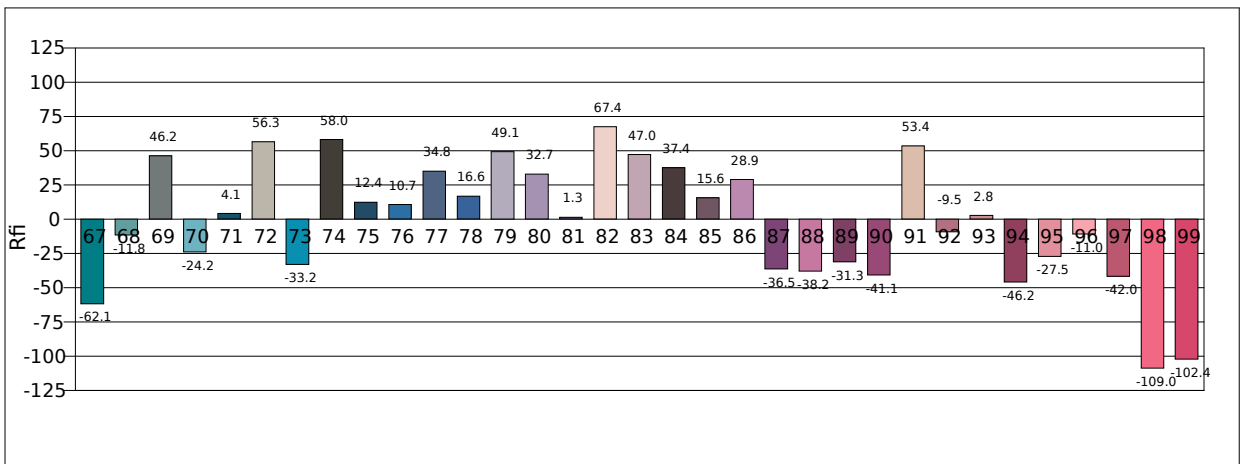
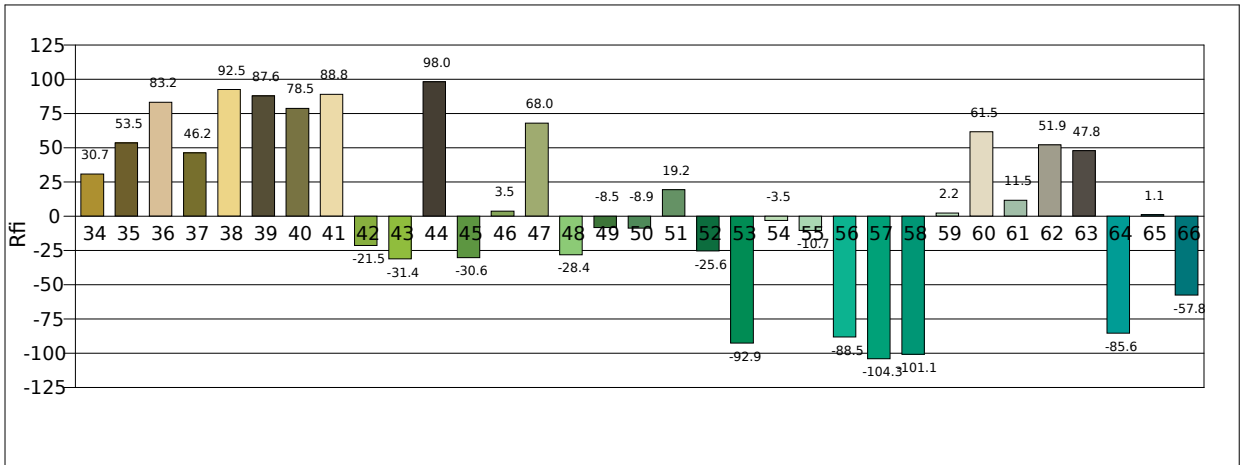
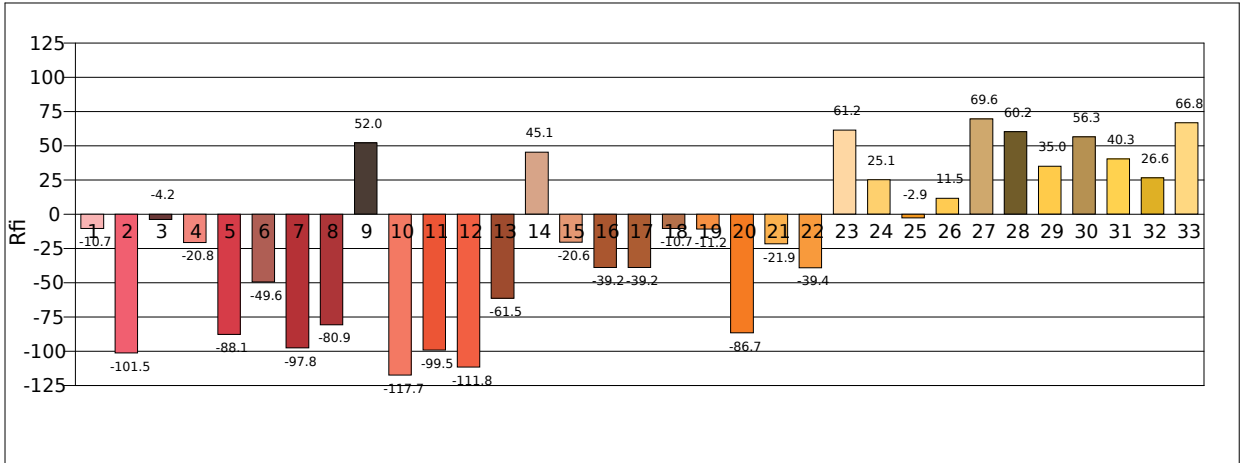
Temperature : 'C

Humidity : -%

Operator : -

Test Date : 2025-02-12

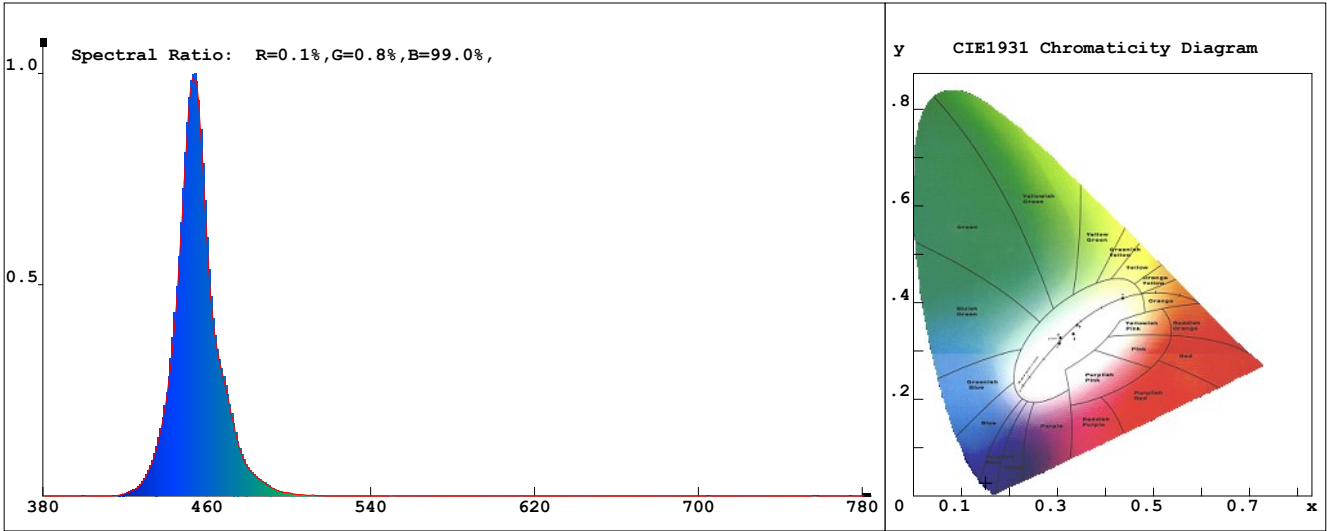
Remark :



# LED Test Report

**Product Mark**

Product Type : ORRGB-F52-576OR2-W8 B      Manufacturer : -  
 Temperature : 'C      Humidity : -%  
 Operator : -      Test Date : 2025-02-12  
 Remark:



**Chroma Parameters**

Chro.Coor.:x=0.1502 y=0.0268 u=0.1989 v=0.0533 duv=-0.0704  
 CCT:100000K Dominant Wave.:456.6nm Purity:99.3% Centre Wave:452.7nm  
 Flux RGB Ratio:R=0.2%,G=5.4%,B=94.4% Peak Wave:452.8nm Half Width:15.7nm

**Rendering Index:Ra=-70.2 CRI=135.2**

R1 =-17    R2 =-70    R3 =-174    R4 =-98    R5 =-10    R6 =-82    R7 =-68    R8 =-42  
 R9 =-290    R10=-300    R11=-123    R12=-152    R13=-45    R14=-44    R15=-3  
 PPF:2.716umol/s (400-700nm)      PRF:0.7mW (400-700nm)      PAR:0.5mW (400-700nm)

**Photo Parameters**

Flux:30.70lm      Effi.:15.11m/W      Radiant:715.5mW      Iv:0.0mcd  
 Scotopic Flux:714.8Plm      Effi.:0.0Plm/W      S/P:23.3  
 Efficiency:0.00      Effi Level:A++ (EU 874-2012)      Photon Flux:2721.060umol/s (380-780nm)

**Ele. Parameters**

Forward Current:If=87.0mA      Reverse Voltage:Vr=5.00V  
 Forward Voltage:Vf=23.39V      Reverse Current:Ir=0.00uA  
 Power:P=2.050W

**Instrument state**

Instrument:Lisun LMS-8000      Integral Time: 94.484ms      VPeak: 15576  
 VDark: 1244      Scan Range: 380-780nm      Product ID: 201508924

# IES TM-30-2015 Test Report

**Product Mark**

Product Type : ORRGB-F52-576OR2-W8 B

Manufacturer : -

Temperature : 'C

Humidity : -%

Operator : -

Test Date : 2025-02-12

Remark :

