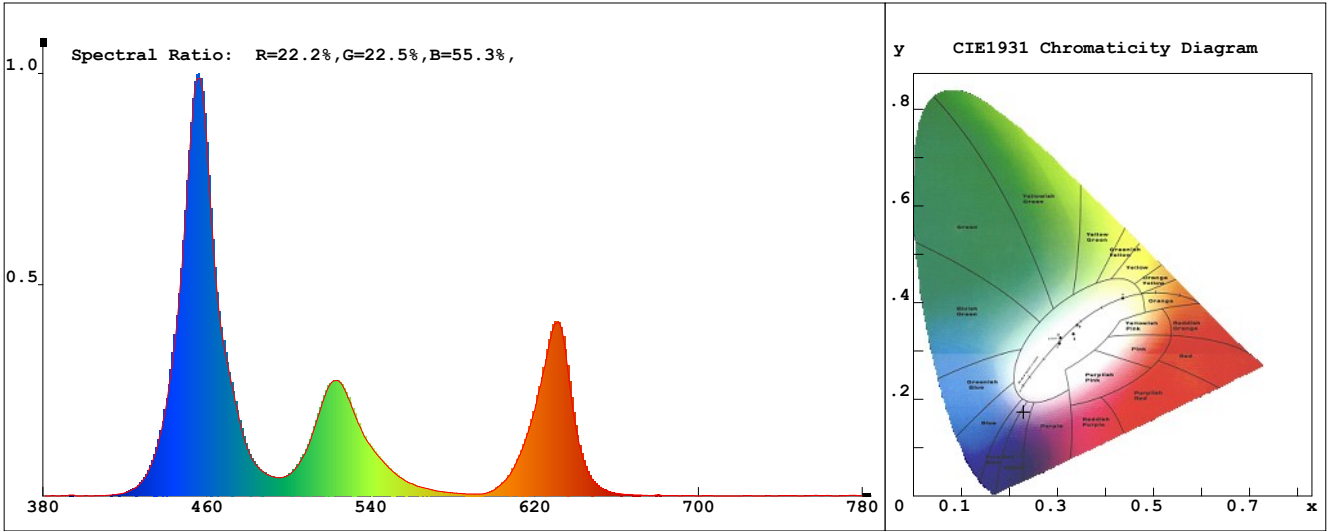


LED Test Report

Product Mark

Product Type : ORRGB-F52-576OR2-W10 RGB Manufacturer : -
 Temperature : 'C Humidity : -%
 Operator : - Test Date : 2025-02-12
 Remark :



Chroma Parameters

Chro.Coor.:x=0.2287 y=0.1738 u=0.1976 v=0.2253 duv=-0.0266
 CCT:100000K Dominant Wave.:463.4nm Purity:53.7% Centre Wave:454.9nm
 Flux RGB Ratio:R=24.7%,G=63.5%,B=11.8% Peak Wave:454.8nm Half Width:17.7nm

Rendering Index:Ra= 41.4 CRI= 83.1

R1 =8 R2 =41 R3 =86 R4 =46 R5 =41 R6 =49 R7 =69 R8 =-8
 R9 =-268 R10=-25 R11=26 R12=51 R13=9 R14=86 R15=-20
 PPF:10.064umol/s (400-700nm) PRF:2.4mW (400-700nm) PAR:1.9mW (400-700nm)

Photo Parameters

Flux:455.72lm Effi.:36.2lm/W Radiant:2366.5mW Iv:0.0mcd
 Scotopic Flux:2028.2Plm Effi.:0.0Plm/W S/P:4.5
 Efficiency:0.00 Effi Level:A++ (EU 874-2012) Photon Flux:10097.100umol/s (380-780nm)

Ele. Parameters

Forward Current:If=538.0mA Reverse Voltage:Vr=5.00V
 Forward Voltage:Vf=23.39V Reverse Current:Ir=0.00uA
 Power:P=12.601W

Instrument state

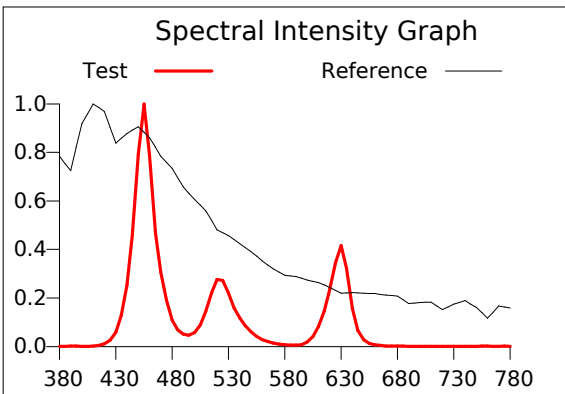
Instrument:Lisun LMS-8000 Integral Time: 47.564ms VPeak: 13080
 VDark: 1232 Scan Range: 380-780nm Product ID: 201508924

IES TM-30-2015 Test Report

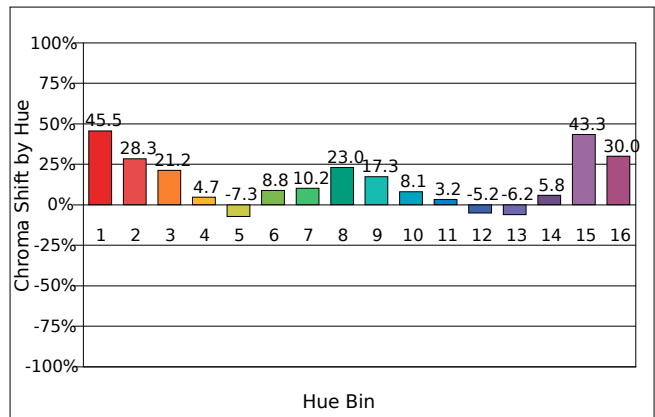
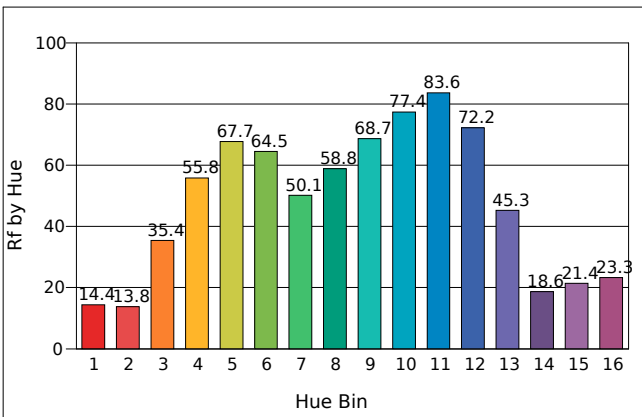
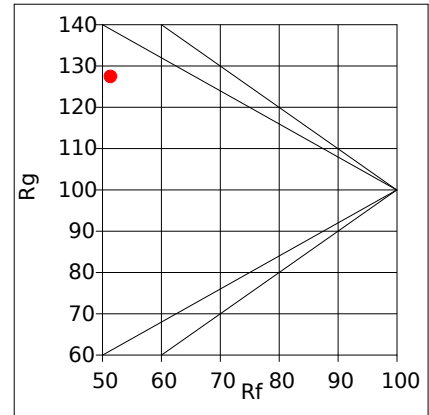
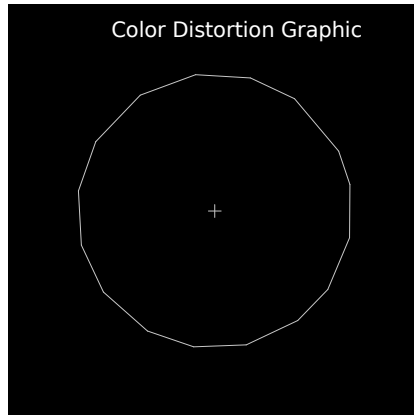
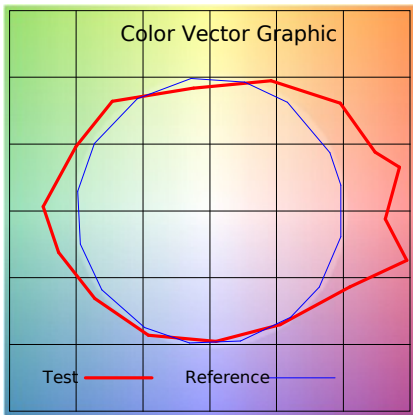
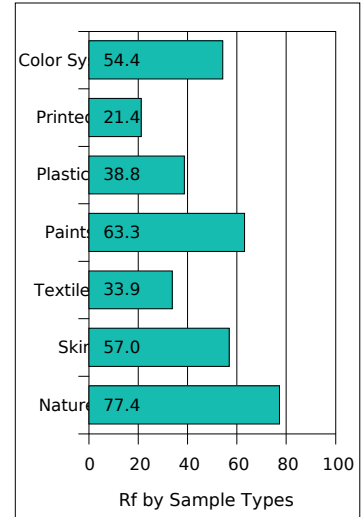
Product Mark

Product Type : ORRGB-F52-576OR2-W10 RGB Manufacturer : -
 Temperature : 'C Humidity : -%
 Operator : - Test Date : 2025-02-12
 Remark :

Rf: 51.4 CCT(K): 100000u': 0.1976
 Rg: 127.4 LER: 179.7 Duv: -0.0266 v': 0.2253



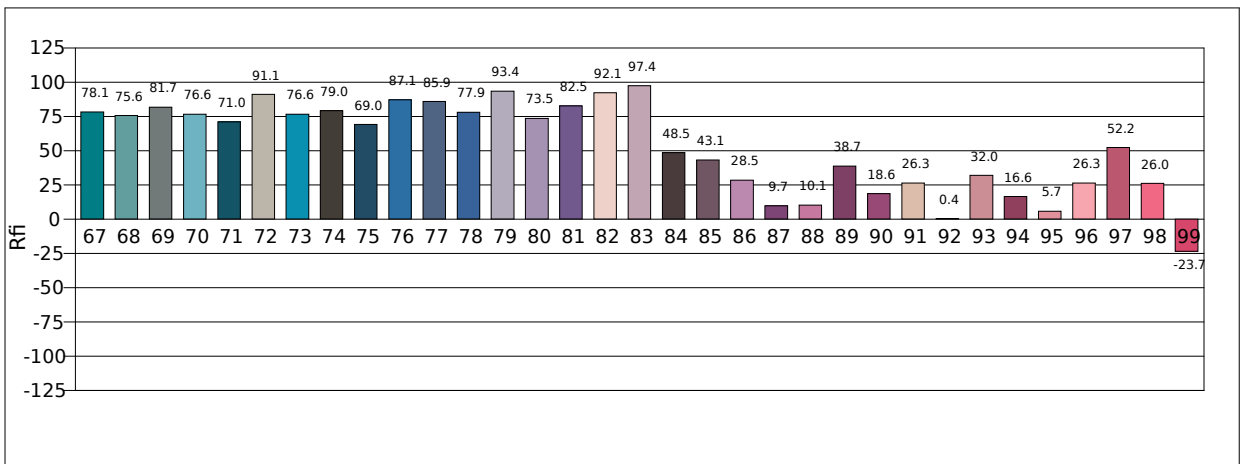
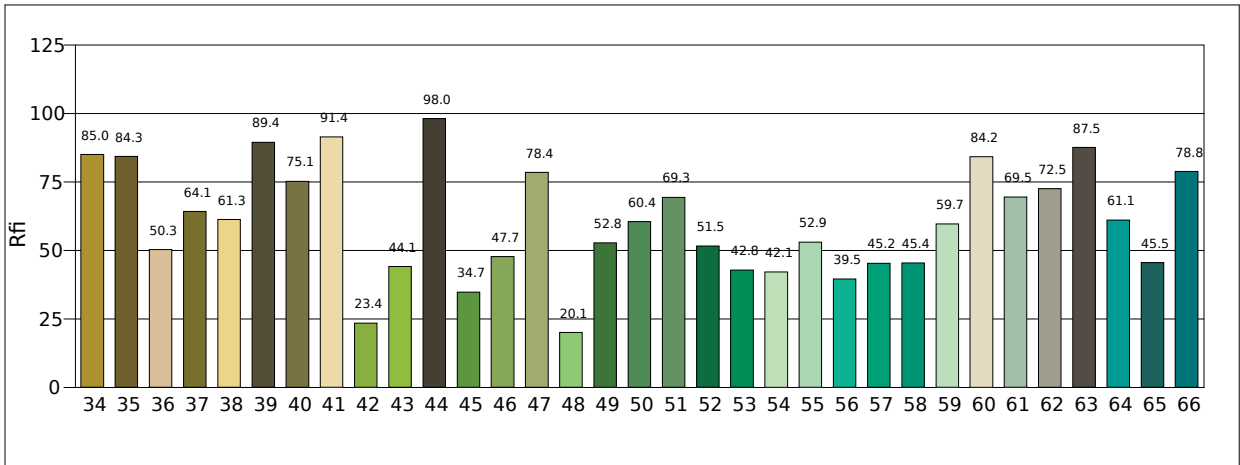
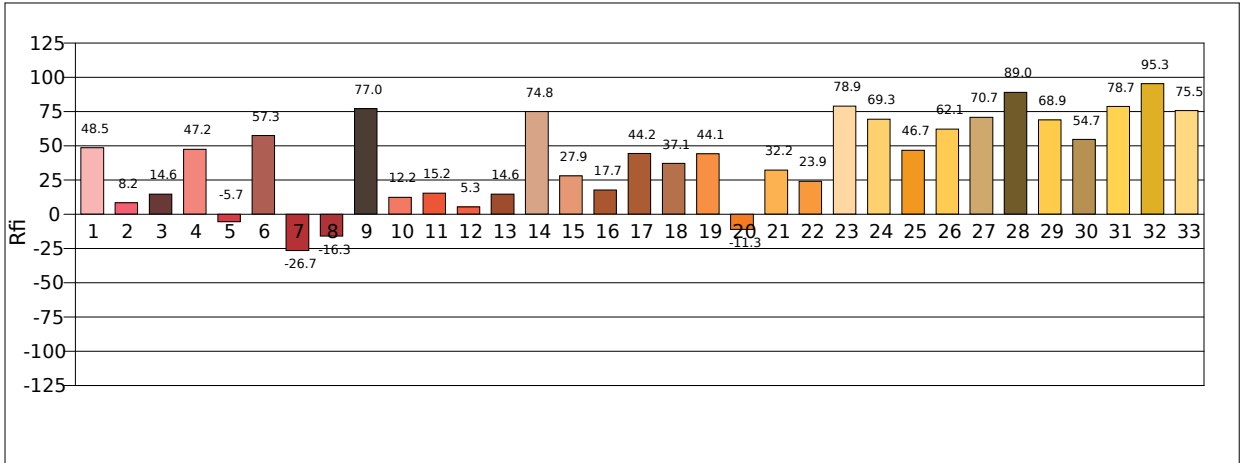
Hue Bin	Rf	Graphic Shifts (%)	
		Chroma	Hue
1	14.4	45.5%	4.6%
2	13.8	28.3%	-18.3%
3	35.4	21.2%	-33.4%
4	55.8	4.7%	-19.3%
5	67.7	-7.3%	-0.4%
6	64.5	8.8%	16.6%
7	50.1	10.2%	9.5%
8	58.8	23.0%	16.1%
9	68.7	17.3%	2.9%
10	77.4	8.1%	2.5%
11	83.6	3.2%	5.5%
12	72.2	-5.2%	19.3%
13	45.3	-6.2%	31.6%
14	18.6	5.8%	49.7%
15	21.4	43.3%	52.9%
16	23.3	30.0%	19.4%



IES TM-30-2015 Test Report

Product Mark

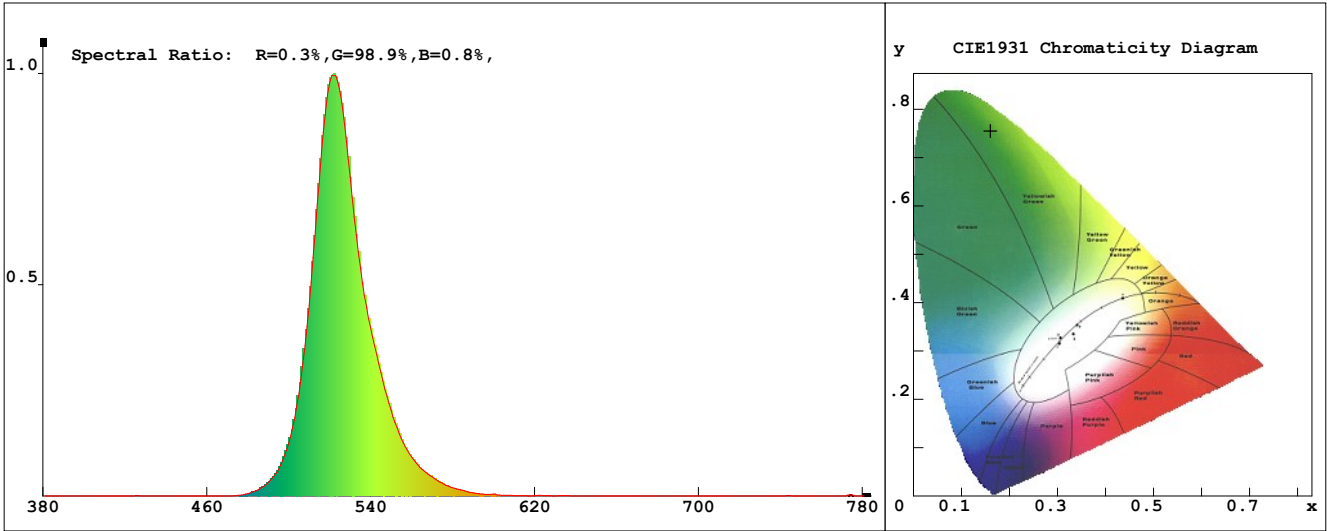
Product Type : ORRGB-F52-576OR2-W10 RGB Manufacturer : -
 Temperature : 'C Humidity : -%
 Operator : - Test Date : 2025-02-12
 Remark :



LED Test Report

Product Mark

Product Type : ORRGB-F52-576OR2-W10 G Manufacturer : -
 Temperature : 'C Humidity : -%
 Operator : - Test Date : 2025-02-12
 Remark :



Chroma Parameters

Chro.Coor.:x=0.1604 y=0.7555 u=0.0546 v=0.3859 duv=0.1635
 CCT: 7834K Dominant Wave.:527.6nm Purity:87.4% Centre Wave:522.5nm
 Flux RGB Ratio:R=0.1%,G=99.7%,B=0.2% Peak Wave:520.6nm Half Width:25.3nm

Rendering Index:Ra=-34.5 CRI=111.0

R1 =-39 R2 =-22 R3 =-46 R4 =-78 R5 =-14 R6 =-24 R7 =-15 R8 =-37
 R9 =-367 R10=-135 R11=-110 R12=-48 R13=-49 R14=26 R15=-36
 PPF:2.412umol/s (400-700nm) PRF:0.5mW (400-700nm) PAR:0.4mW (400-700nm)

Photo Parameters

Flux:308.12lm Effi.:122.01lm/W Radiant:549.0mW Iv:0.0mcd
 Scotopic Flux:846.5Plm Effi.:0.0Plm/W S/P:2.7
 Efficiency:0.00 Effi Level:A++ (EU 874-2012) Photon Flux:2415.030umol/s (380-780nm)

Ele. Parameters

Forward Current:If=108.0mA Reverse Voltage:Vr=5.00V
 Forward Voltage:Vf=23.39V Reverse Current:Ir=0.00uA
 Power:P=2.530W

Instrument state

Instrument:Lisun LMS-8000 Integral Time: 152.668ms VPeak: 14616
 VDark: 1268 Scan Range: 380-780nm Product ID: 201508924

IES TM-30-2015 Test Report

Product Mark

Product Type : ORRGB-F52-576OR2-W10 G

Manufacturer : -

Temperature : 'C

Humidity : -%

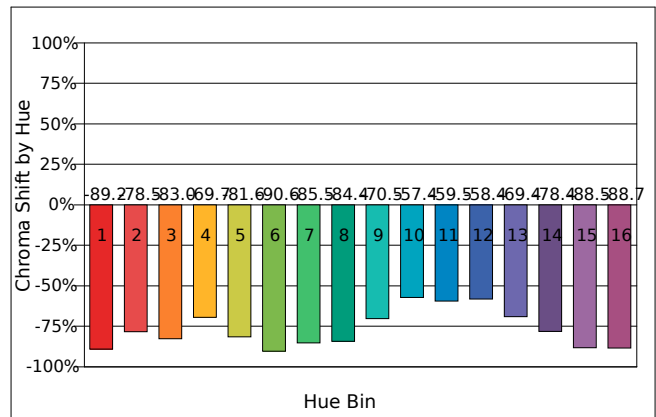
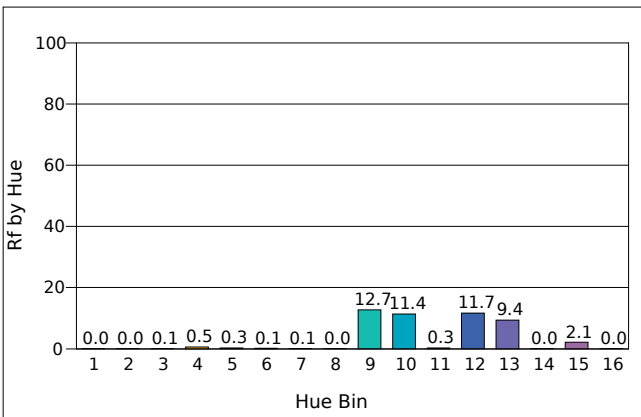
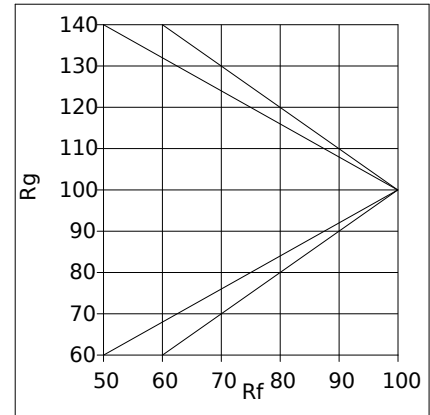
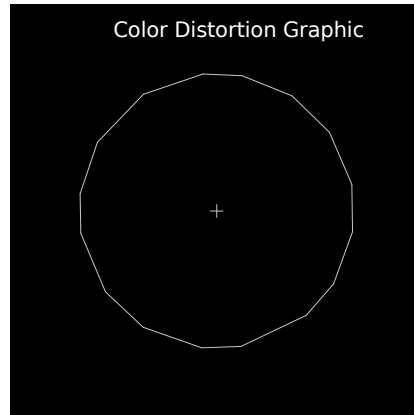
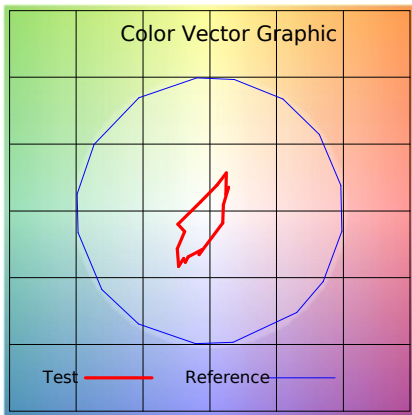
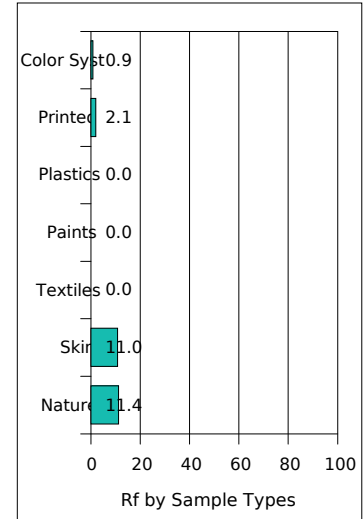
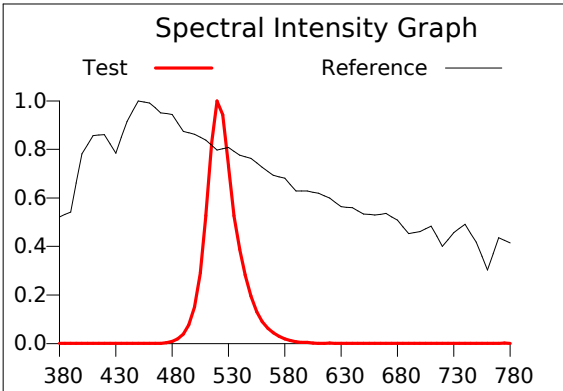
Operator : -

Test Date : 2025-02-12

Remark :

Rf: 0.2 CCT(K): 7834 u': 0.0546
 Rg: 3.6 LER: 507.1 Duv: 0.1635 v': 0.3859

Hue Bin	Rf	Graphic Shifts (%)	
		Chroma	Hue
1	0.0	-89.2%	2.7%
2	0.0	-78.5%	4.9%
3	0.1	-83.0%	-4.2%
4	0.5	-69.7%	-7.8%
5	0.3	-81.6%	0.9%
6	0.1	-90.6%	5.1%
7	0.1	-85.5%	14.7%
8	0.0	-84.4%	11.6%
9	12.7	-70.5%	26.5%
10	11.4	-57.4%	17.6%
11	0.3	-59.5%	0.7%
12	11.7	-58.4%	-19.3%
13	9.4	-69.4%	-20.6%
14	0.0	-78.4%	-32.5%
15	2.1	-88.5%	-34.9%
16	0.0	-88.7%	-11.0%



IES TM-30-2015 Test Report

Product Mark

Product Type : ORRGB-F52-576OR2-W10 G

Manufacturer : -

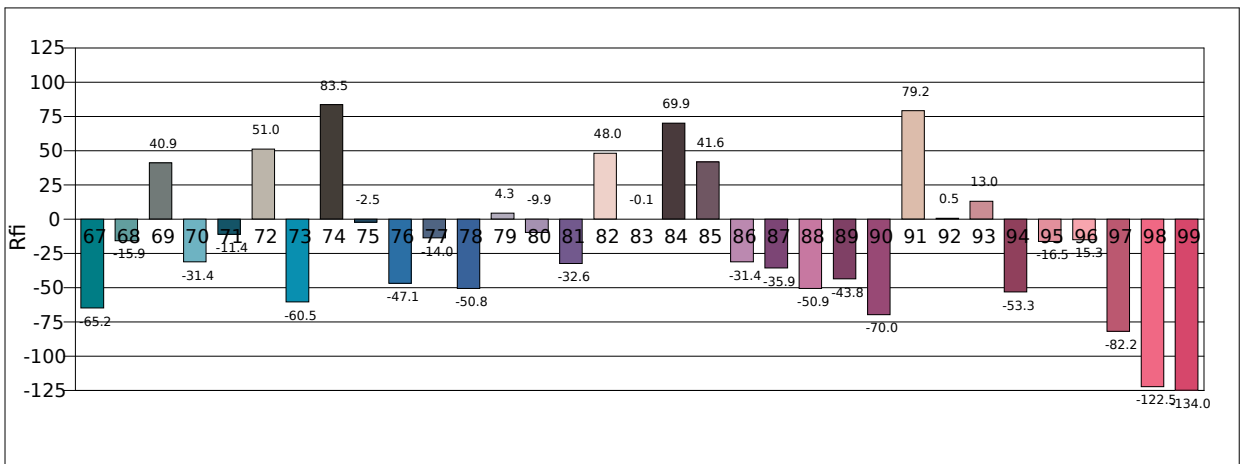
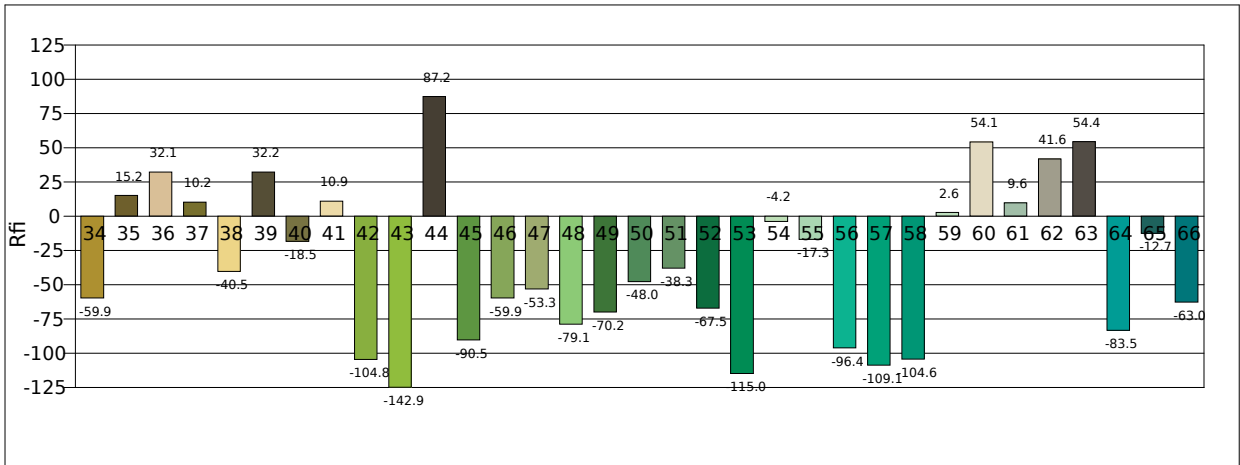
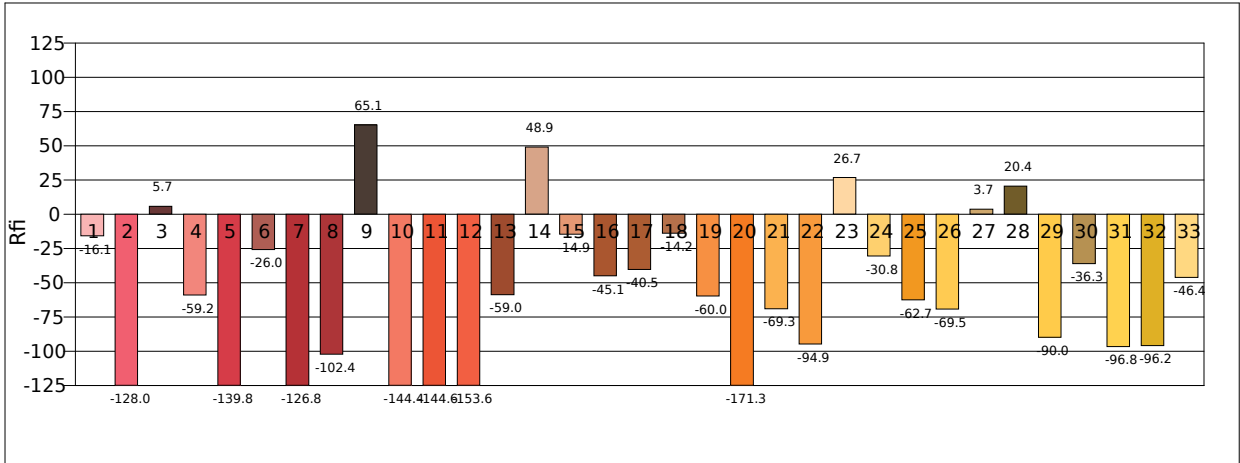
Temperature : 'C

Humidity : -%

Operator : -

Test Date : 2025-02-12

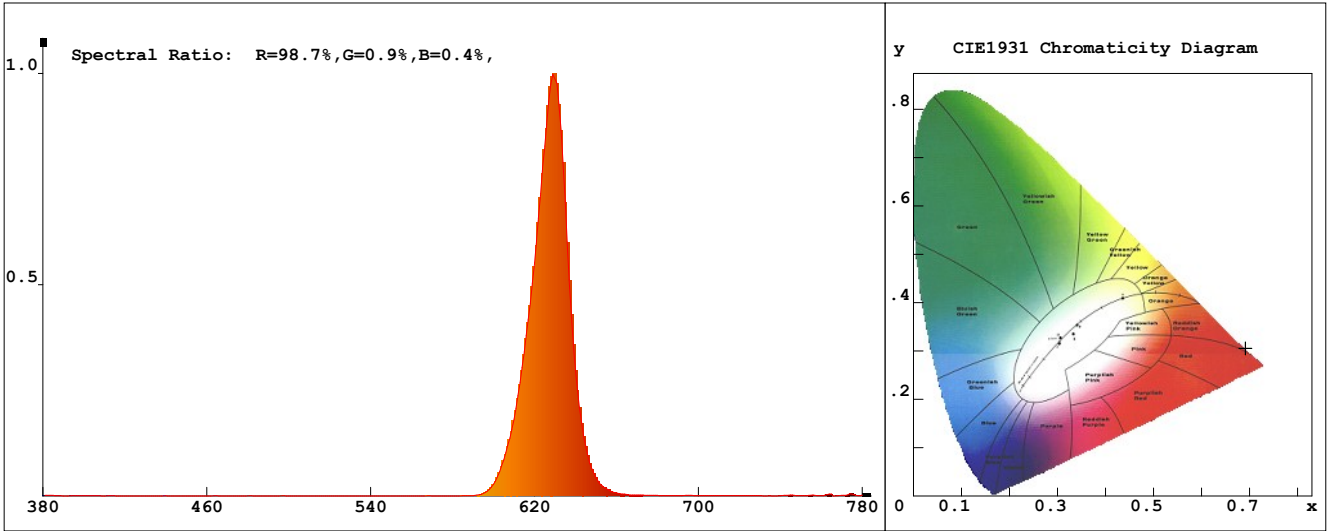
Remark :



LED Test Report

Product Mark

Product Type : ORRGB-F52-576OR2-W10 R Manufacturer : -
 Temperature : 'C Humidity : -%
 Operator : - Test Date : 2025-02-12
 Remark :



Chroma Parameters

Chro.Coor.:x=0.6919 y=0.3054 u=0.5240 v=0.3470 duv=-0.0012
 CCT: 1335K Dominant Wave.:621.6nm Purity:99.2% Centre Wave:627.1nm
 Flux RGB Ratio:R=98.0%,G=1.9%,B=0.0% Peak Wave:628.6nm Half Width:18.2nm

Rendering Index:Ra=-15.4 CRI=100.9

R1 =-40 R2 =57 R3 =11 R4 =-67 R5 =-32 R6 =62 R7 =-9 R8 =-106
 R9 =-332 R10=47 R11=-76 R12=38 R13=-13 R14=41 R15=-76
 PPF:2.957umol/s (400-700nm) PRF:0.6mW (400-700nm) PAR:0.6mW (400-700nm)

Photo Parameters

Flux:118.69lm Effi.:19.0lm/W Radiant:569.8mW Iv:0.0mcd
 Scotopic Flux:7.6Plm Effi.:0.0Plm/W S/P:0.1
 Efficiency:0.00 Effi Level:A++ (EU 874-2012) Photon Flux:2982.650umol/s (380-780nm)

Ele. Parameters

Forward Current:If=267.0mA Reverse Voltage:Vr=5.00V
 Forward Voltage:Vf=23.39V Reverse Current:Ir=0.00uA
 Power:P=6.270W

Instrument state

Instrument:Lisun LMS-8000 Integral Time: 126.233ms VPeak: 15048
 VDark: 1347 Scan Range: 380-780nm Product ID: 201508924

IES TM-30-2015 Test Report

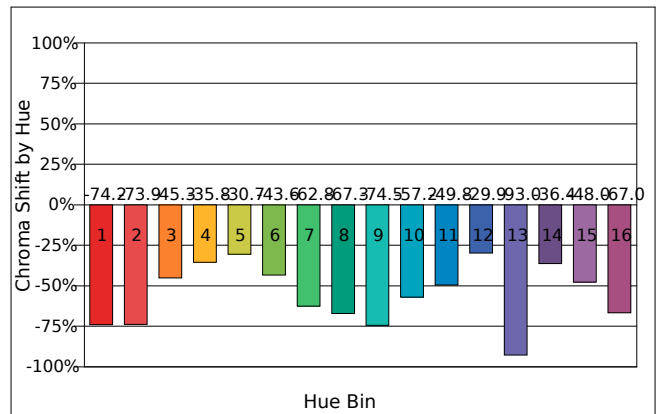
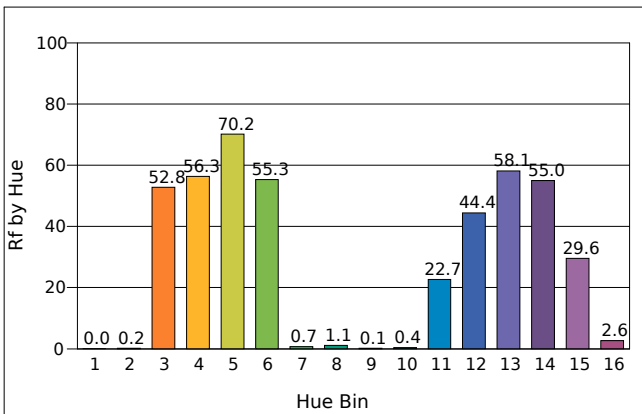
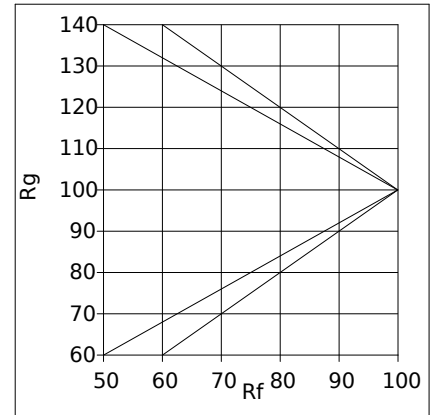
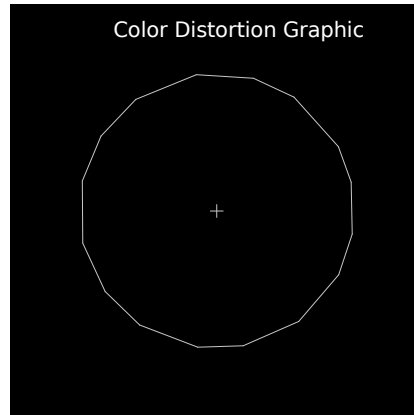
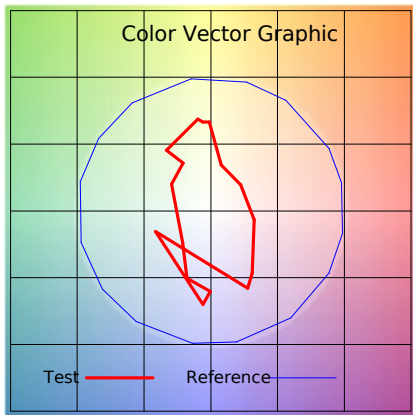
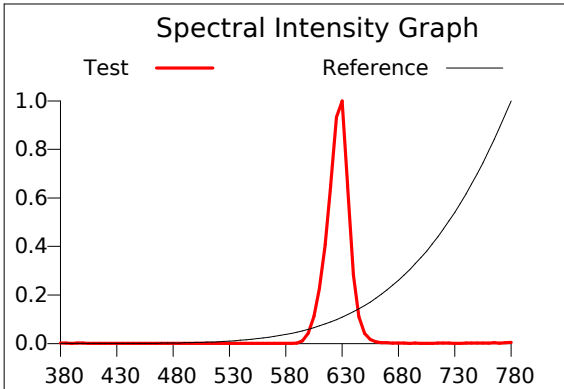
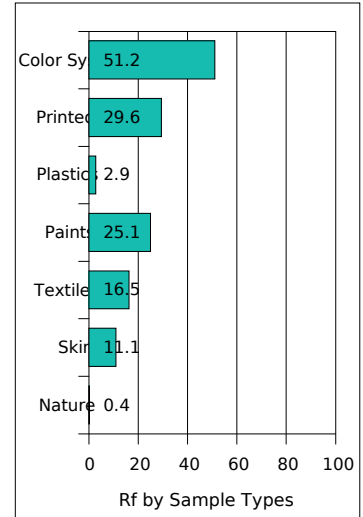
Product Mark

Product Type : ORRGB-F52-576OR2-W10 R
 Temperature : 'C
 Operator : -
 Remark:

Manufacturer : -
 Humidity : -%
 Test Date : 2025-02-12

Rf: 5.5 CCT(K): 1335 u': 0.5240
 Rg: 16.5 LER: 213.1 Duv: -0.0012 v': 0.3470

Hue Bin	Rf	Chroma	Hue
1	0.0	-74.2%	13.3%
2	0.2	-73.9%	34.5%
3	52.8	-45.3%	38.6%
4	56.3	-35.8%	26.2%
5	70.2	-30.7%	1.0%
6	55.3	-43.6%	-1.5%
7	0.7	-62.8%	-19.9%
8	1.1	-67.3%	-11.6%
9	0.1	-74.5%	15.9%
10	0.4	-57.2%	28.3%
11	22.7	-49.8%	33.6%
12	44.4	-29.9%	2.1%
13	58.1	-93.0%	-43.2%
14	55.0	-36.4%	-14.3%
15	29.6	-48.0%	-32.0%
16	2.6	-67.0%	-2.8%



IES TM-30-2015 Test Report

Product Mark

Product Type : ORRGB-F52-576OR2-W10 R

Manufacturer : -

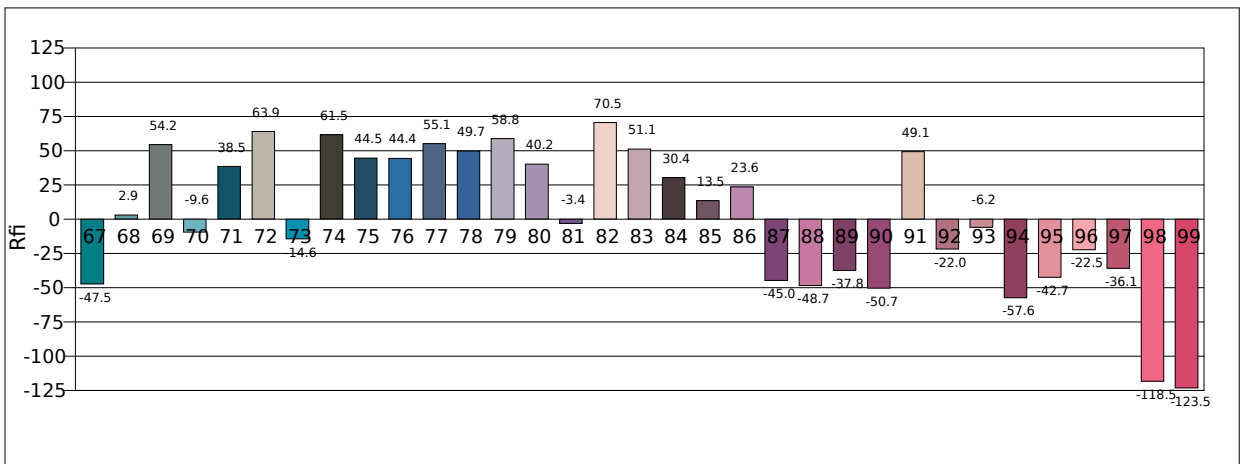
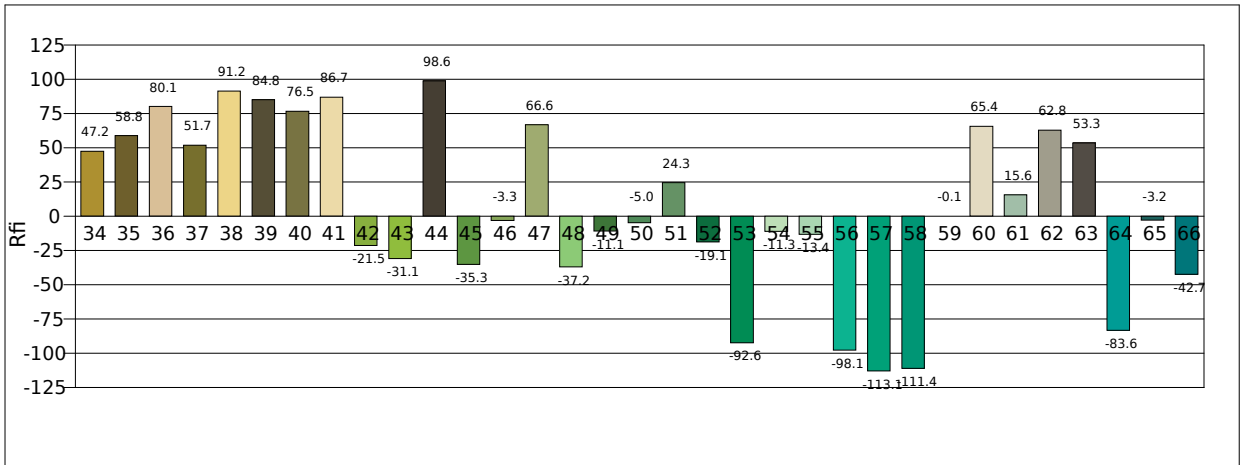
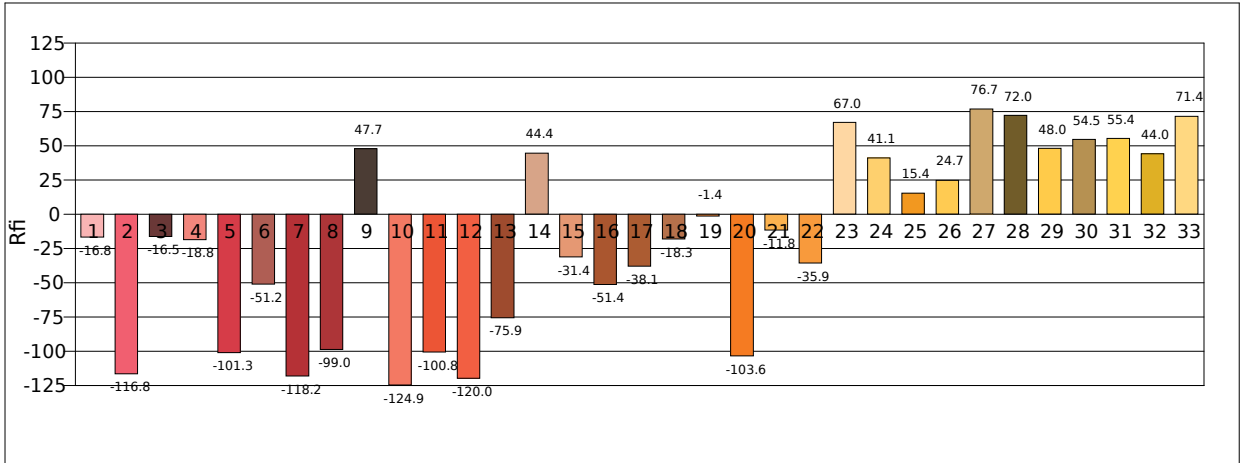
Temperature : 'C

Humidity : -%

Operator : -

Test Date : 2025-02-12

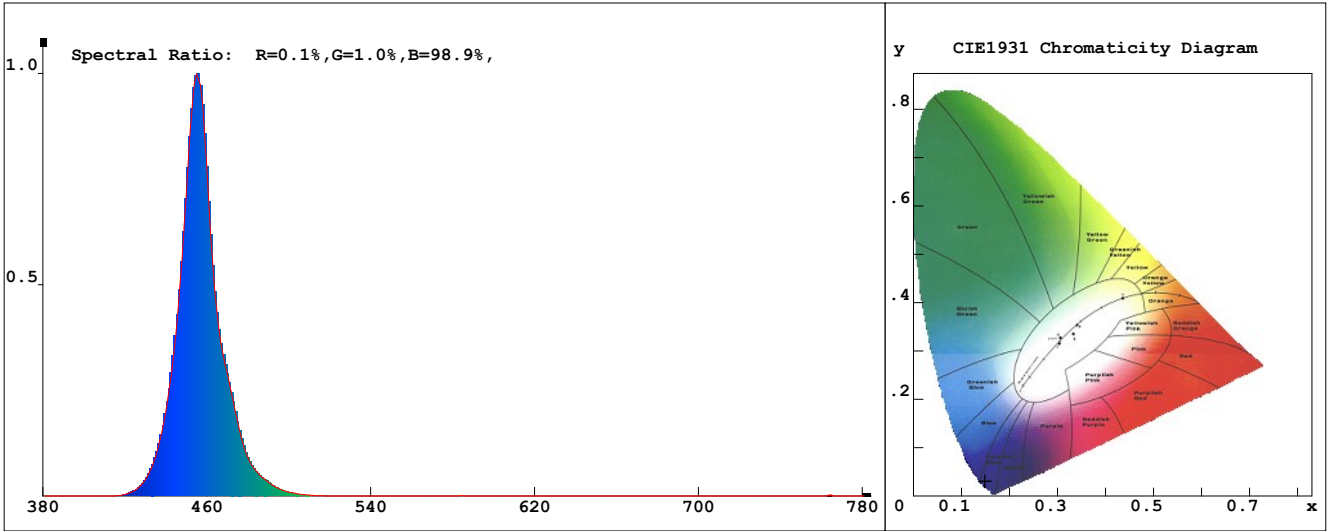
Remark :



LED Test Report

Product Mark

Product Type : ORRGB-F52-576OR2-W10 B Manufacturer : -
 Temperature : 'C Humidity : -%
 Operator : - Test Date : 2025-02-12
 Remark:



Chroma Parameters

Chro.Coor.:x=0.1488 y=0.0306 u=0.1938 v=0.0598 duv=-0.0639
 CCT:100000K Dominant Wave.:458.2nm Purity:98.8% Centre Wave:454.4nm
 Flux RGB Ratio:R=0.0%,G=5.6%,B=94.4% Peak Wave:454.8nm Half Width:16.7nm

Rendering Index:Ra=-68.2 CRI=139.0

R1 =-44 R2 =-84 R3 =-176 R4 =-83 R5 =20 R6 =-61 R7 =-64 R8 =-53
 R9 =-306 R10=-314 R11=-108 R12=-136 R13=-76 R14=-47 R15=-28
 PPF:5.204umol/s (400-700nm) PRF:1.4mW (400-700nm) PAR:1.0mW (400-700nm)

Photo Parameters

Flux:64.68lm Effi.:16.3lm/W Radiant:1365.4mW Iv:0.0mcd
 Scotopic Flux:1458.8Plm Effi.:0.0Plm/W S/P:22.6
 Efficiency:0.00 Effi Level:A++ (EU 874-2012) Photon Flux:5207.910umol/s (380-780nm)

Ele. Parameters

Forward Current:If=170.0mA Reverse Voltage:Vr=5.00V
 Forward Voltage:Vf=23.39V Reverse Current:Ir=0.00uA
 Power:P=4.001W

Instrument state

Instrument:Lisun LMS-8000 Integral Time: 47.564ms VPeak: 14264
 VDark: 1242 Scan Range: 380-780nm Product ID: 201508924

IES TM-30-2015 Test Report

Product Mark

Product Type : ORRGB-F52-576OR2-W10 B

Manufacturer : -

Temperature : 'C

Humidity : -%

Operator : -

Test Date : 2025-02-12

Remark :

