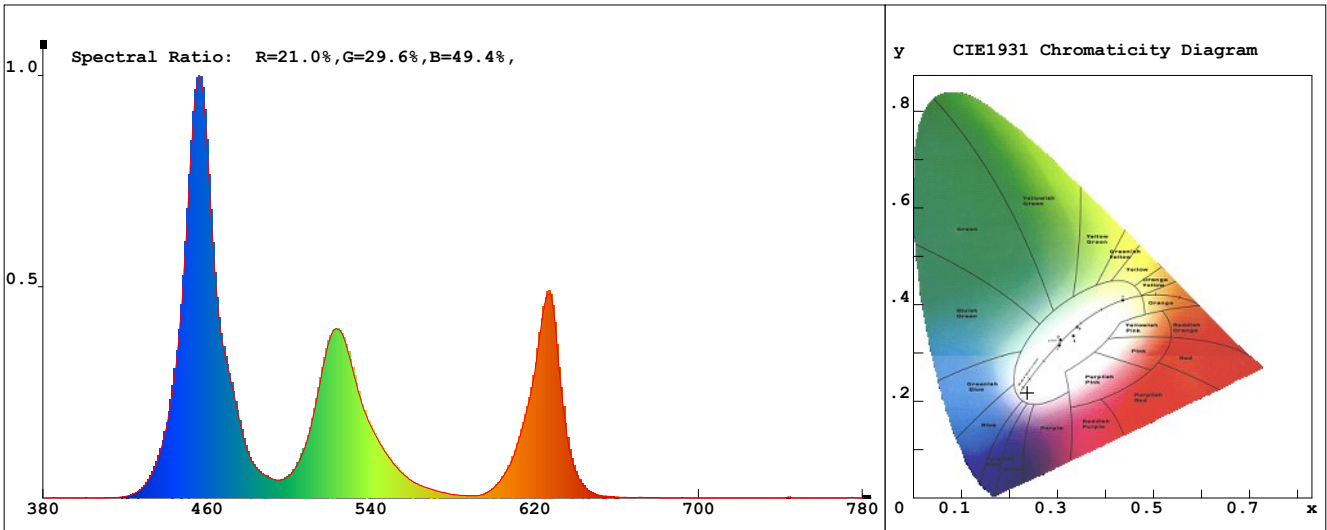


LED Test Report

Product Mark

Product Type : ORRGB-F52-576OR0 RGB Manufacturer : -
 Temperature : 'C Humidity : -%
 Operator : - Test Date : 2025-02-12
 Remark :



Chroma Parameters

Chro.Coor.:x=0.2368 y=0.2175 u=0.1844 v=0.2541 duv=-0.0066
 CCT:100000K Dominant Wave.:472.9nm Purity:44.5% Centre Wave:455.5nm
 Flux RGB Ratio:R=21.9%,G=69.2%,B=8.9% Peak Wave:455.8nm Half Width:16.1nm

Rendering Index:Ra= 58.4 CRI= 69.4

R1 =38 R2 =75 R3 =73 R4 =50 R5 =61 R6 =76 R7 =73 R8 =21
 R9 =-161 R10=54 R11=29 R12=63 R13=44 R14=79 R15=19
 PPF:3.655umol/s (400-700nm) PRF:0.9mW (400-700nm) PAR:0.7mW (400-700nm)

Photo Parameters

Flux:198.68lm Effi.:36.6lm/W Radiant:853.1mW Iv:0.0mcd
 Scotopic Flux:765.5Plm Effi.:0.0Plm/W S/P:3.9
 Efficiency:0.00 Effi Level:A++ (EU 874-2012) Photon Flux:3659.090umol/s (380-780nm)

Ele. Parameters

Forward Current:If=1087.0mA Reverse Voltage:Vr=5.00V
 Forward Voltage:Vf=5.00V Reverse Current:Ir=0.00uA
 Power:P=5.441W

Instrument state

Instrument:Lisun LMS-8000 Integral Time: 159.211ms VPeak: 14760
 VDark: 1188 Scan Range: 380-780nm Product ID: 201508924

IES TM-30-2015 Test Report

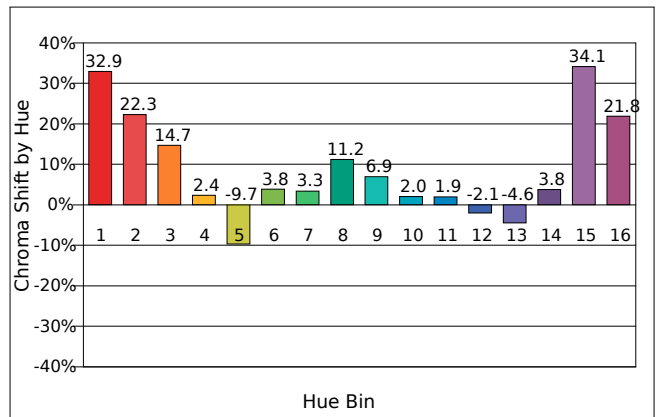
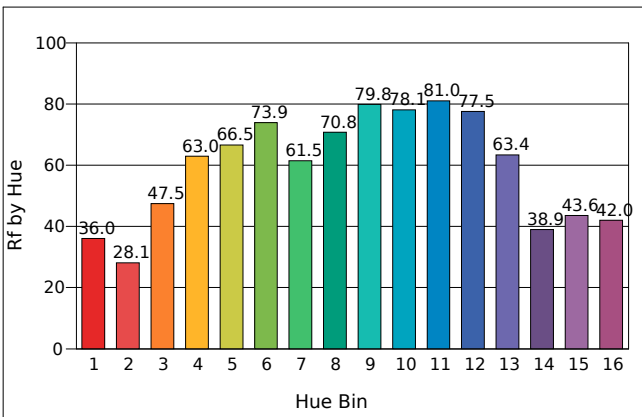
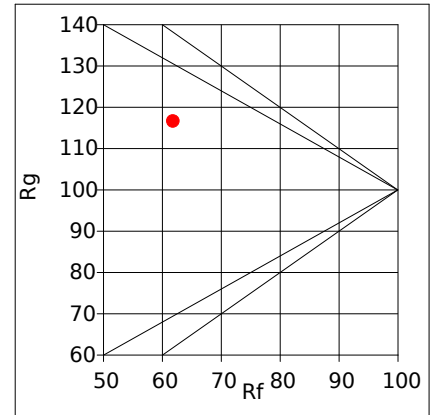
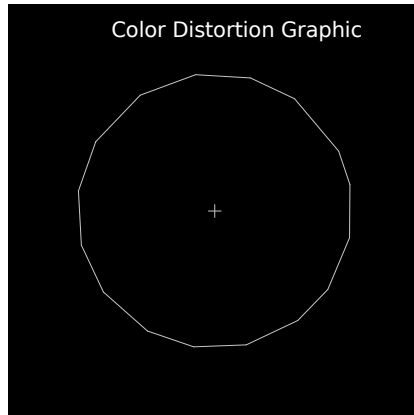
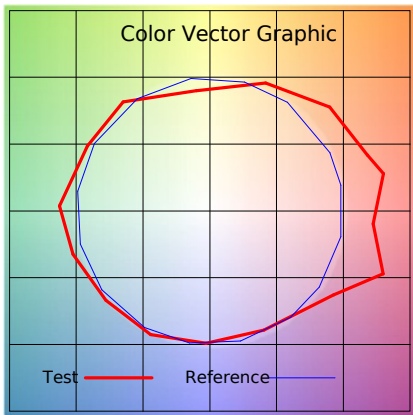
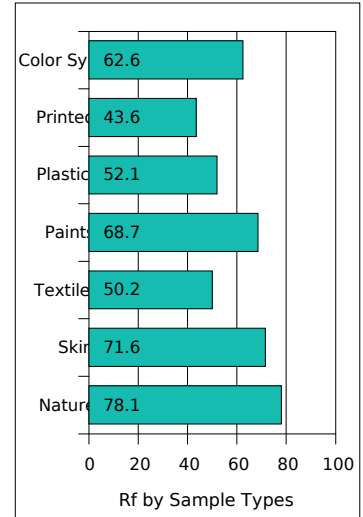
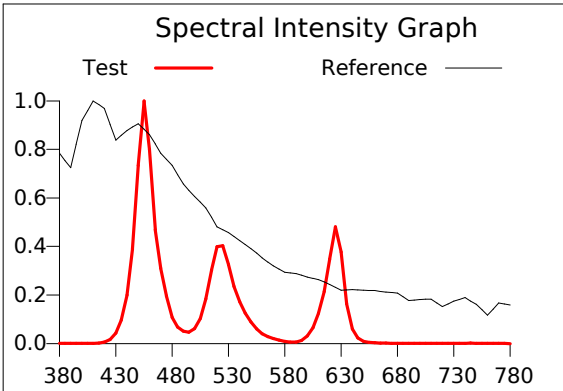
Product Mark

Product Type : ORRGB-F52-576OR0 RGB
 Temperature : 'C
 Operator : -
 Remark :

Manufacturer : -
 Humidity : -%
 Test Date : 2025-02-12

Rf: 61.8 CCT(K): 100000u': 0.1844
 Rg: 116.6 LER: 220.9duv: -0.0066 v': 0.2541

Hue Bin	Rf	Chroma	Hue
1	36.0	32.9%	2.4%
2	28.1	22.3%	-16.9%
3	47.5	14.7%	-28.3%
4	63.0	2.4%	-15.6%
5	66.5	-9.7%	-2.1%
6	73.9	3.8%	10.2%
7	61.5	3.3%	4.4%
8	70.8	11.2%	13.3%
9	79.8	6.9%	6.3%
10	78.1	2.0%	8.2%
11	81.0	1.9%	6.8%
12	77.5	-2.1%	12.5%
13	63.4	-4.6%	18.7%
14	38.9	3.8%	36.1%
15	43.6	34.1%	34.6%
16	42.0	21.8%	14.3%



IES TM-30-2015 Test Report

Product Mark

Product Type : ORRGB-F52-576OR0 RGB

Manufacturer : -

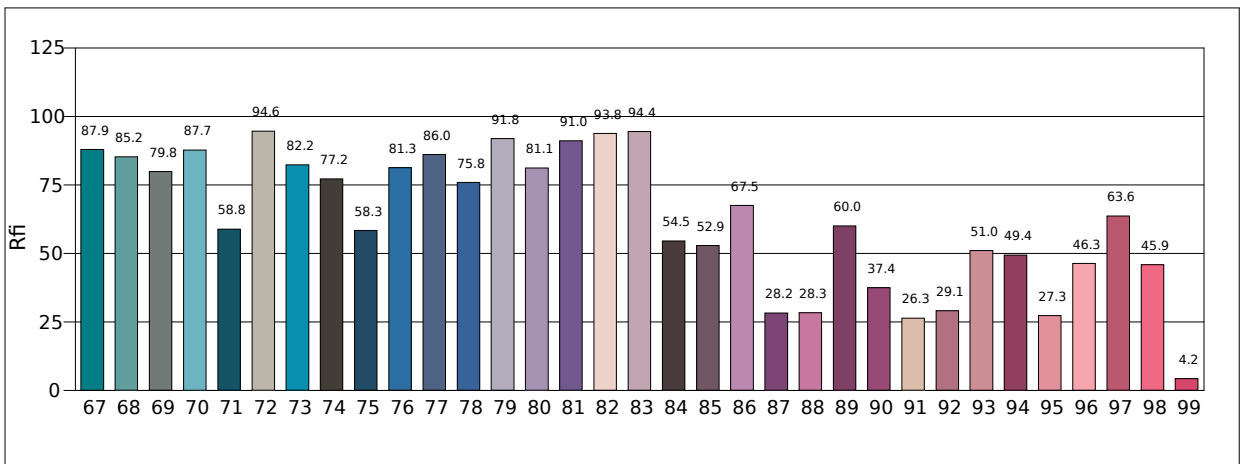
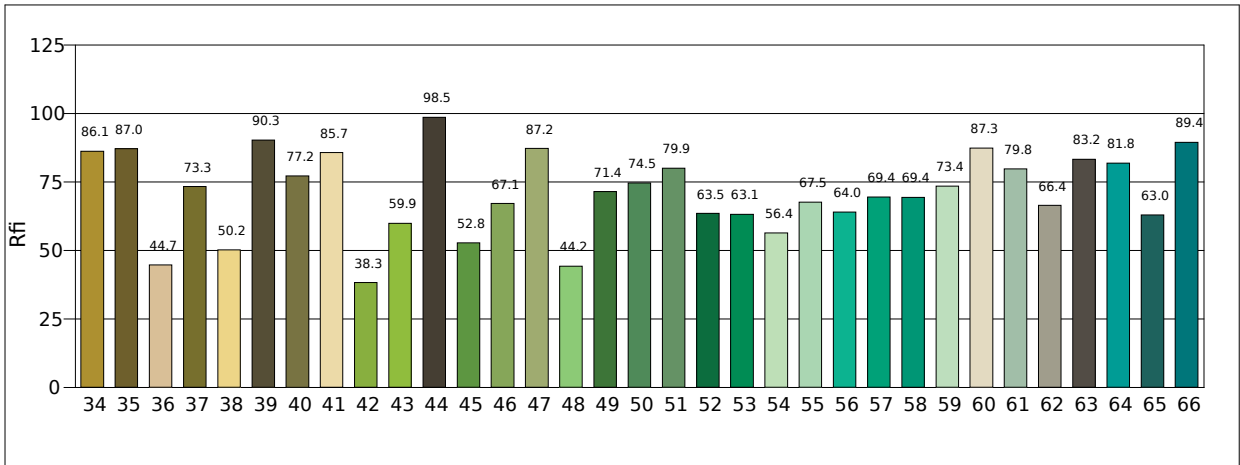
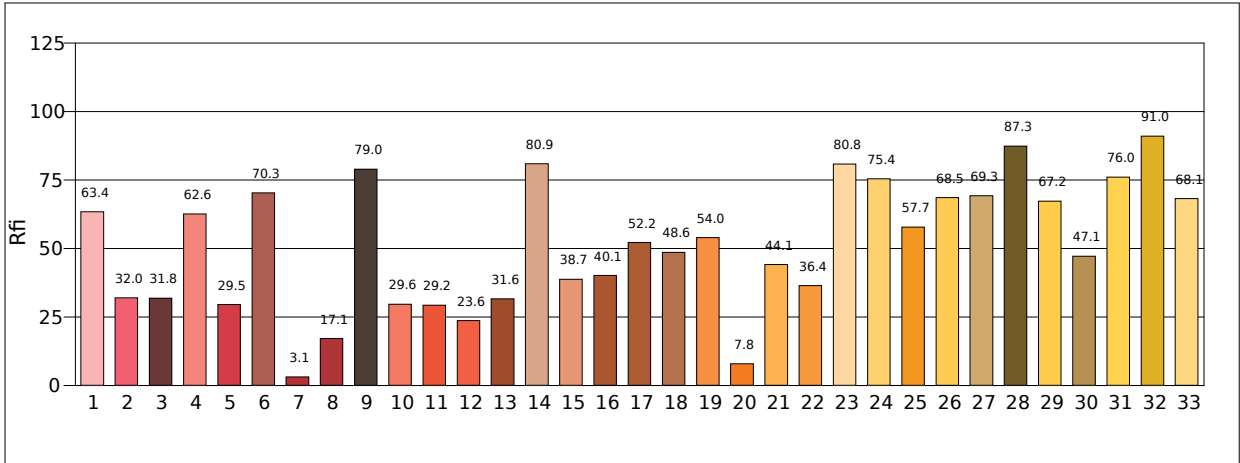
Temperature : 'C

Humidity : -%

Operator : -

Test Date : 2025-02-12

Remark :

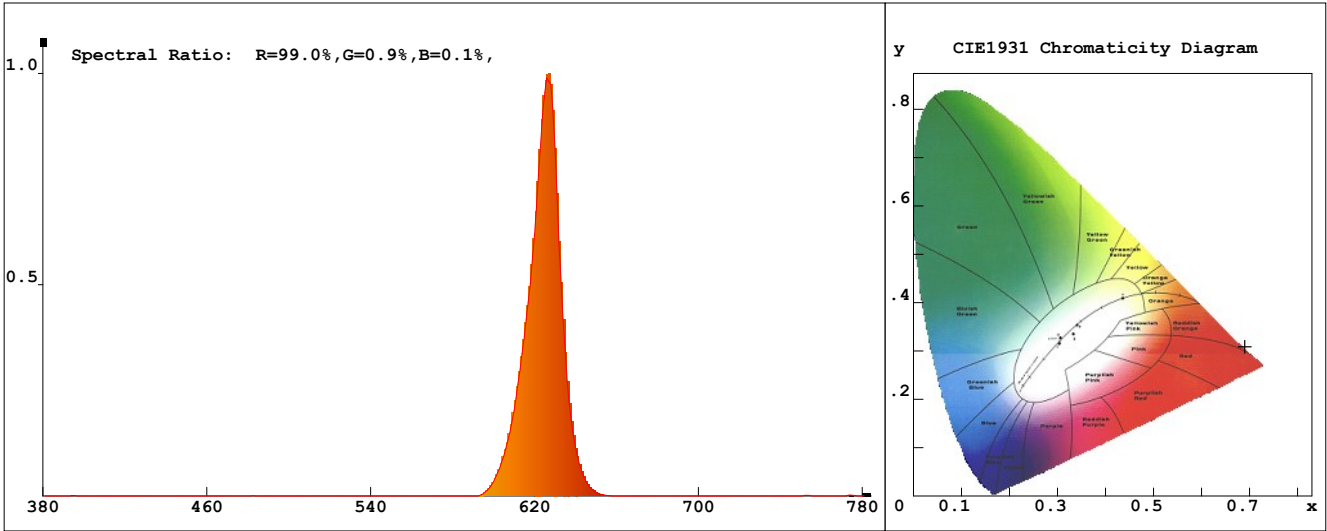


LED Test Report

Product Mark

Product Type : ORRGB-F52-576OR0 R
 Temperature : 'C
 Operator : -
 Remark:

Manufacturer : -
 Humidity : -%
 Test Date : 2025-02-12



Chroma Parameters

Chro.Coor.:x=0.6906 y=0.3089 u=0.5186 v=0.3480 duv=-0.0006
 CCT: 1311K Dominant Wave.:619.8nm Purity:99.9% Centre Wave:624.5nm
 Flux RGB Ratio:R=98.3%,G=1.7%,B=0.0% Peak Wave:625.5nm Half Width:15.1nm

Rendering Index:Ra=-22.1 CRI=108.4

R1 =-46 R2 =54 R3 =7 R4 =-76 R5 =-40 R6 =62 R7 =-17 R8 =-121
 R9 =-354 R10=41 R11=-86 R12=31 R13=-19 R14=39 R15=-86
 PPF:1.050umol/s (400-700nm) PRF:0.2mW (400-700nm) PAR:0.2mW (400-700nm)

Photo Parameters

Flux:47.14lm Effi.:17.1lm/W Radiant:201.8mW Iv:0.0mcd
 Scotopic Flux:2.6Plm Effi.:0.0Plm/W S/P:0.1
 Efficiency:0.00 Effi Level:A++ (EU 874-2012) Photon Flux:1051.620umol/s (380-780nm)

Ele. Parameters

Forward Current:If=552.0mA Reverse Voltage:Vr=5.00V
 Forward Voltage:Vf=5.00V Reverse Current:Ir=0.00uA
 Power:P=2.760W

Instrument state

Instrument:Lisun LMS-8000 Integral Time: 305.680ms VPeak: 14808
 VDark: 1439 Scan Range: 380-780nm Product ID: 201508924

IES TM-30-2015 Test Report

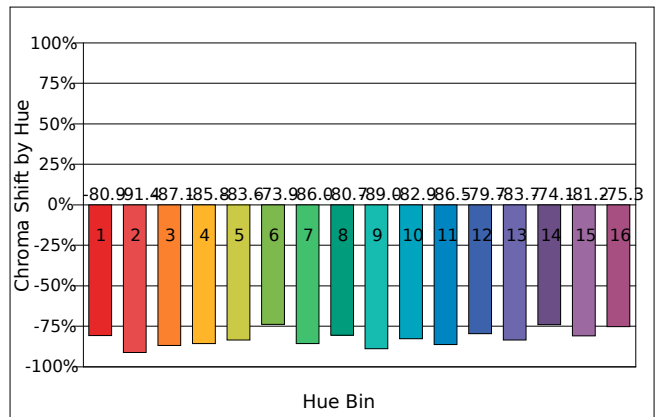
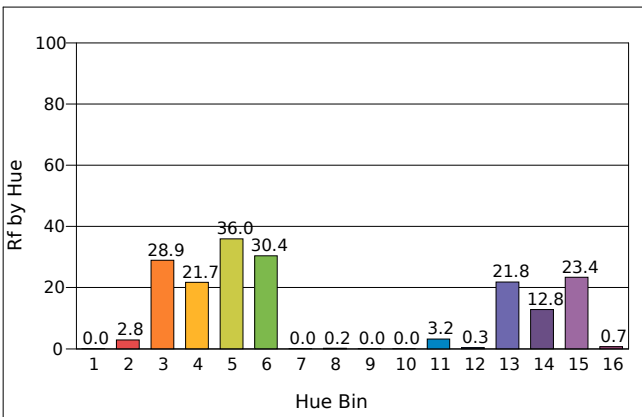
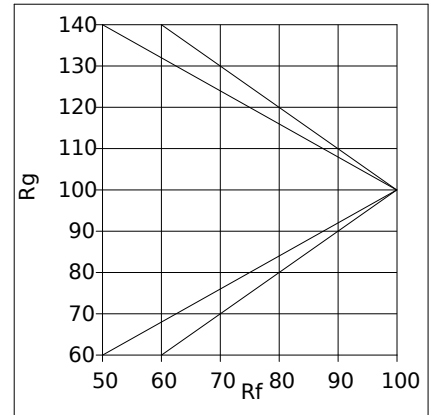
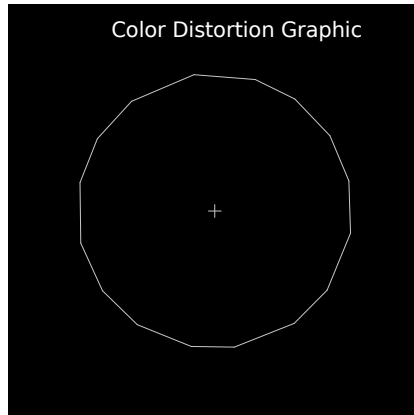
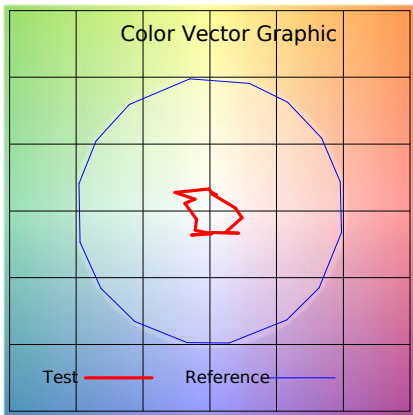
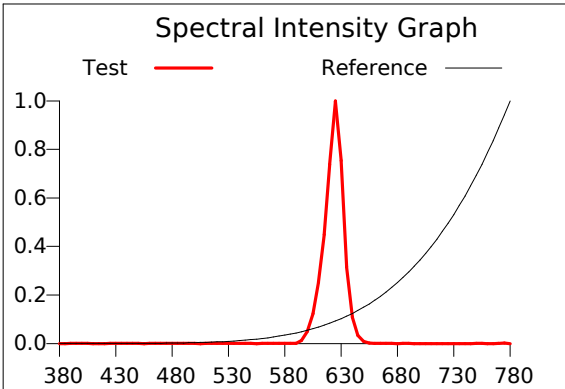
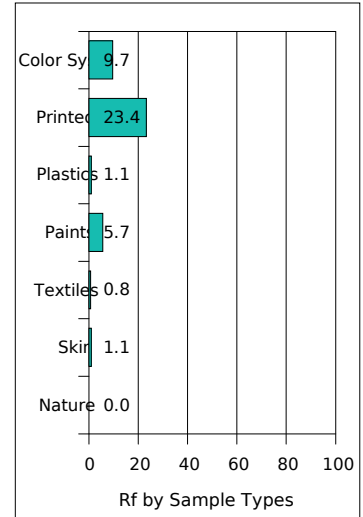
Product Mark

Product Type : ORRGB-F52-576OR0 R
 Temperature : 'C
 Operator : -
 Remark :

Manufacturer : -
 Humidity : -%
 Test Date : 2025-02-12

Rf: 0.6 CCT(K): 1311 u': 0.5186
 Rg: 2.7 LER: 235.0 Duv: -0.0006 v': 0.3480

Hue Bin	Rf	Chroma	Hue
1	0.0	-80.9%	-3.7%
2	2.8	-91.4%	10.8%
3	28.9	-87.1%	5.9%
4	21.7	-85.8%	11.7%
5	36.0	-83.6%	1.8%
6	30.4	-73.9%	8.1%
7	0.0	-86.0%	-4.7%
8	0.2	-80.7%	-0.9%
9	0.0	-89.0%	0.5%
10	0.0	-82.9%	3.2%
11	3.2	-86.5%	11.3%
12	0.3	-79.7%	-12.4%
13	21.8	-83.7%	3.8%
14	12.8	-74.1%	6.0%
15	23.4	-81.2%	-4.6%
16	0.7	-75.3%	-3.7%



IES TM-30-2015 Test Report

Product Mark

Product Type : ORRGB-F52-576OR0 R

Manufacturer : -

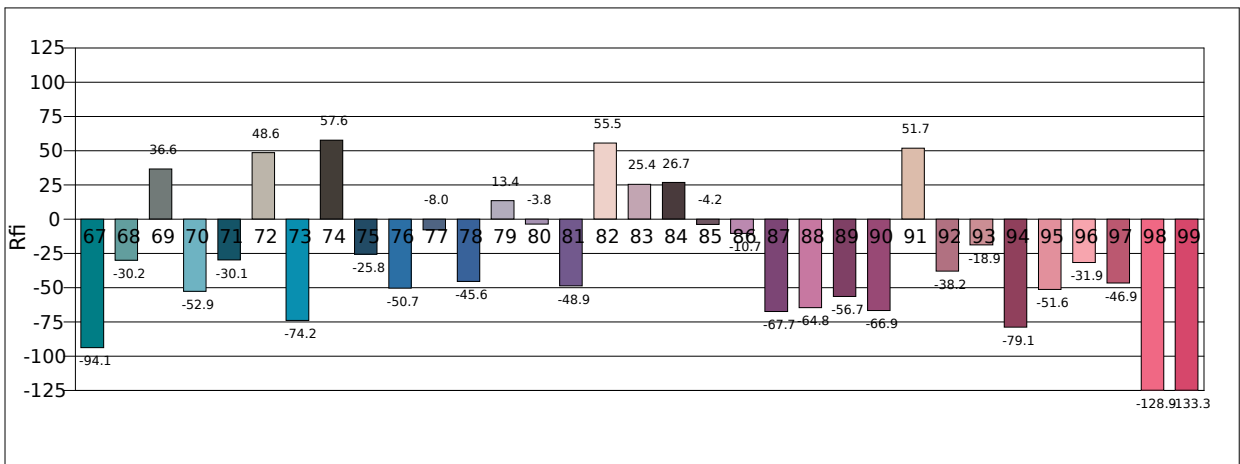
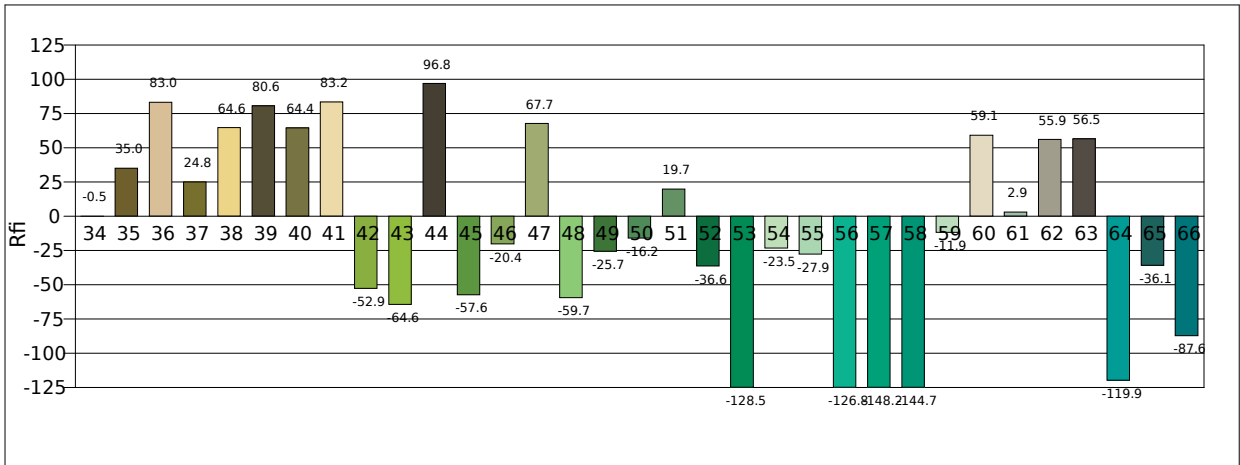
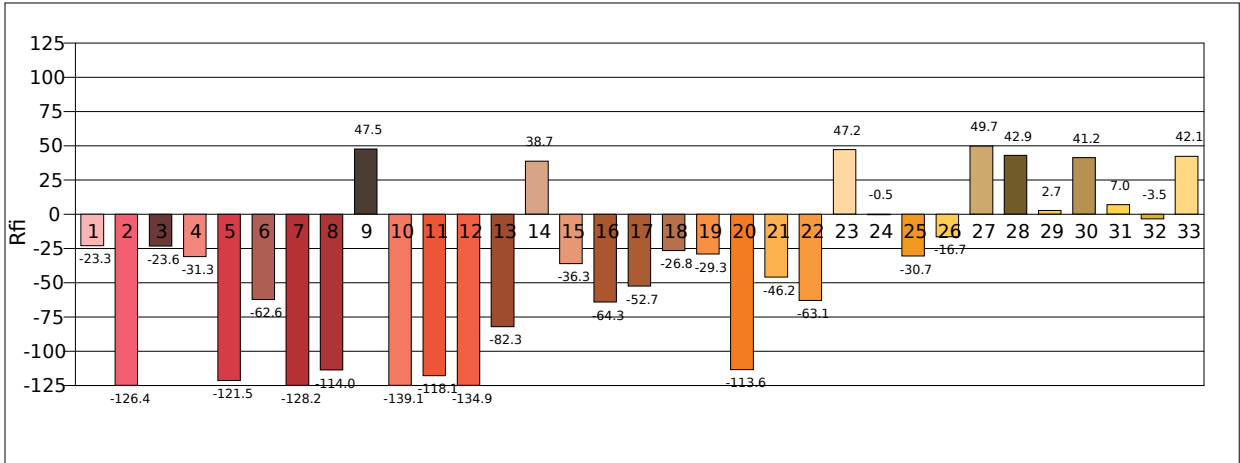
Temperature : 'C

Humidity : -%

Operator : -

Test Date : 2025-02-12

Remark :

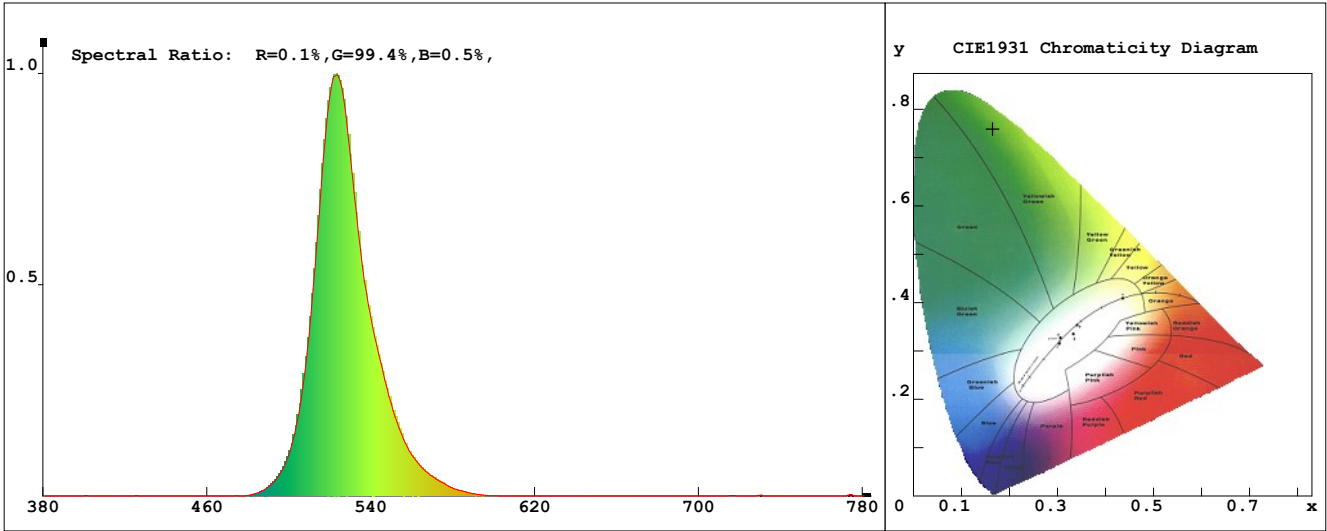


LED Test Report

Product Mark

Product Type : ORRGB-F52-576OR0 G
 Temperature : 'C
 Operator : -
 Remark :

Manufacturer : -
 Humidity : -%
 Test Date : 2025-02-12



Chroma Parameters

Chro.Coor.:x=0.1650 y=0.7596 u=0.0560 v=0.3867 duv=0.1627
 CCT: 7759K Dominant Wave.:528.7nm Purity:89.1% Centre Wave:523.7nm
 Flux RGB Ratio:R=0.0%,G=99.9%,B=0.1% Peak Wave:522.6nm Half Width:24.9nm

Rendering Index:Ra=-36.6 CRI=112.8

R1 =-41 R2 =-22 R3 =-47 R4 =-78 R5 =-15 R6 =-28 R7 =-20 R8 =-40
 R9 =-372 R10=-138 R11=-111 R12=-54 R13=-49 R14=25 R15=-37
 PPF:1.298umol/s (400-700nm) PRF:0.3mW (400-700nm) PAR:0.2mW (400-700nm)

Photo Parameters

Flux:167.23lm Effi.:98.1lm/W Radiant:294.8mW Iv:0.0mcd
 Scotopic Flux:442.6Plm Effi.:0.0Plm/W S/P:2.6
 Efficiency:0.00 Effi Level:A++ (EU 874-2012) Photon Flux:1299.360umol/s (380-780nm)

Ele. Parameters

Forward Current:If=341.0mA Reverse Voltage:Vr=5.00V
 Forward Voltage:Vf=5.00V Reverse Current:Ir=0.00uA
 Power:P=1.711W

Instrument state

Instrument:Lisun LMS-8000 Integral Time: 298.760ms VPeak: 15944
 VDark: 1433 Scan Range: 380-780nm Product ID: 201508924

IES TM-30-2015 Test Report

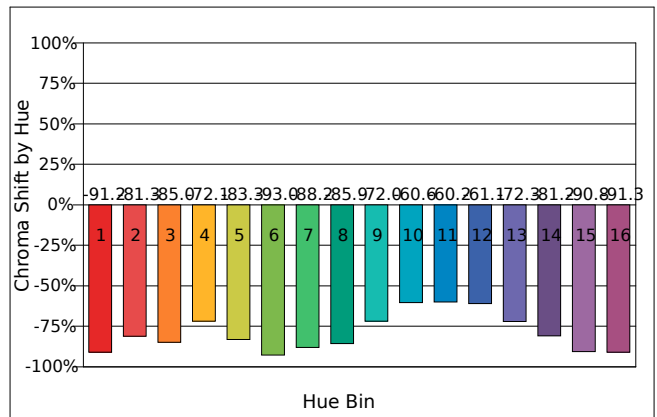
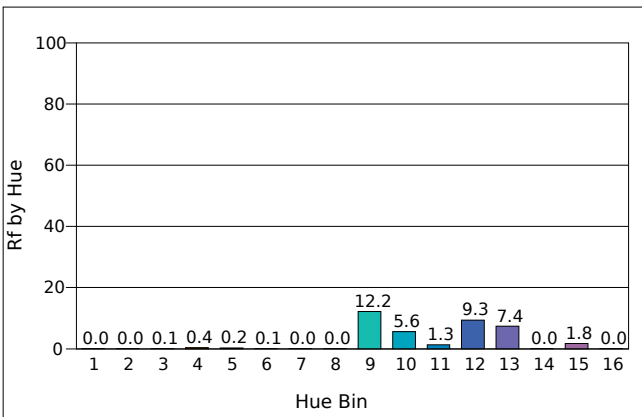
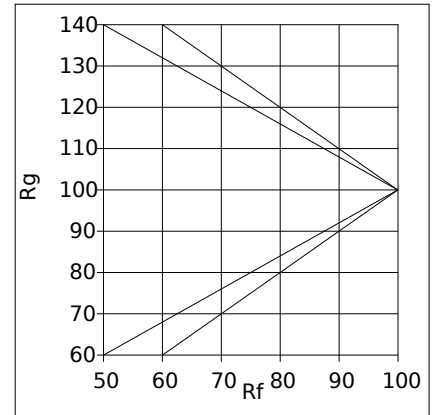
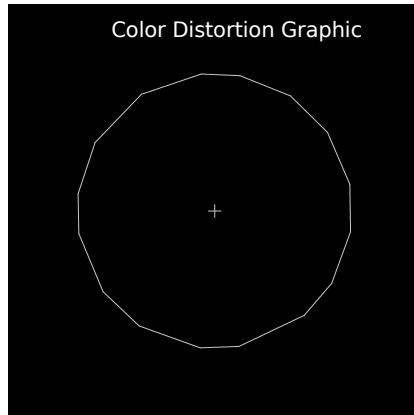
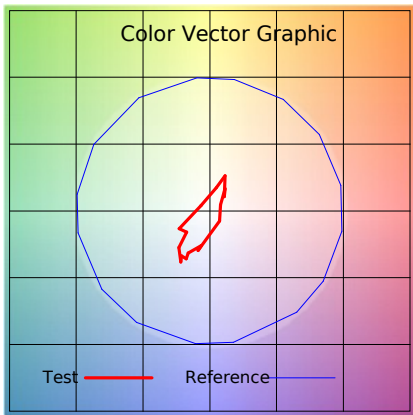
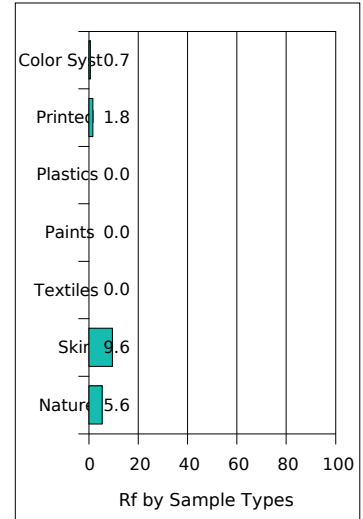
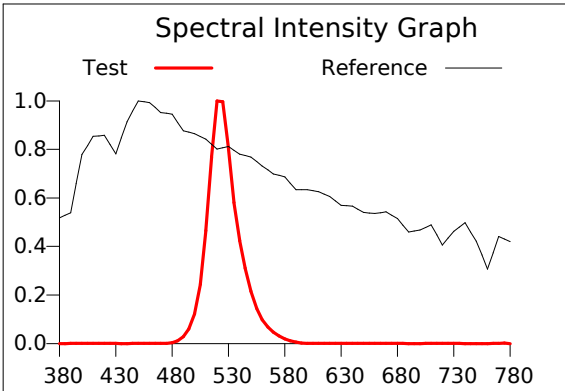
Product Mark

Product Type : ORRGB-F52-5760R0 G
 Temperature : 'C
 Operator : -
 Remark :

Manufacturer : -
 Humidity : -%
 Test Date : 2025-02-12

Rf: 0.1 CCT(K): 7759 u': 0.0560
 Rg: 2.7 LER: 520.5 Duv: 0.1627 v': 0.3867

Hue Bin	Rf	Chroma	Hue
1	0.0	-91.2%	3.2%
2	0.0	-81.3%	5.5%
3	0.1	-85.0%	-3.8%
4	0.4	-72.1%	-7.4%
5	0.2	-83.3%	1.6%
6	0.1	-93.0%	6.2%
7	0.0	-88.2%	16.9%
8	0.0	-85.9%	11.9%
9	12.2	-72.0%	25.6%
10	5.6	-60.6%	15.9%
11	1.3	-60.2%	0.3%
12	9.3	-61.1%	-19.2%
13	7.4	-72.3%	-19.9%
14	0.0	-81.2%	-31.7%
15	1.8	-90.8%	-32.9%
16	0.0	-91.3%	-10.2%



IES TM-30-2015 Test Report

Product Mark

Product Type : ORRGB-F52-576OR0 G

Manufacturer : -

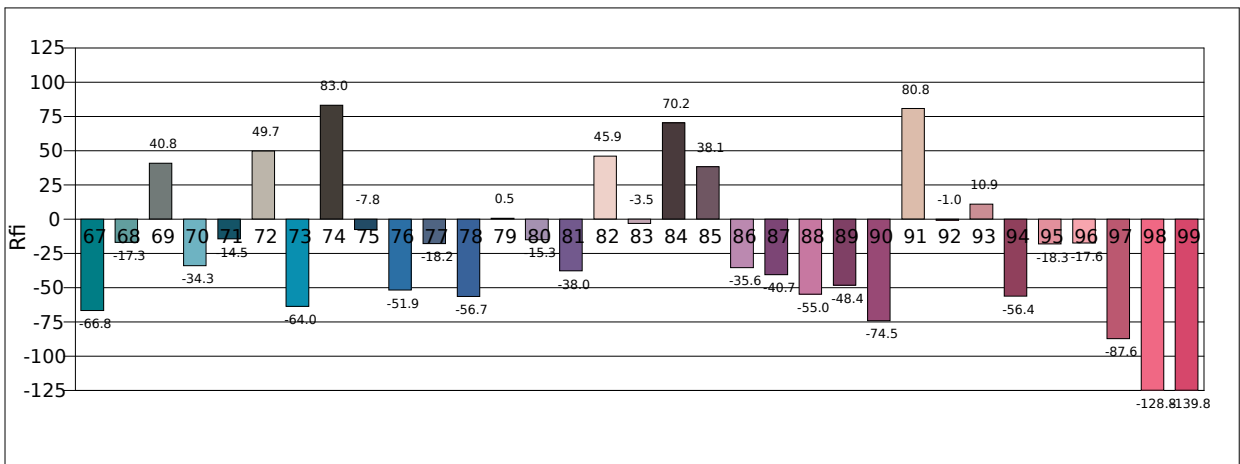
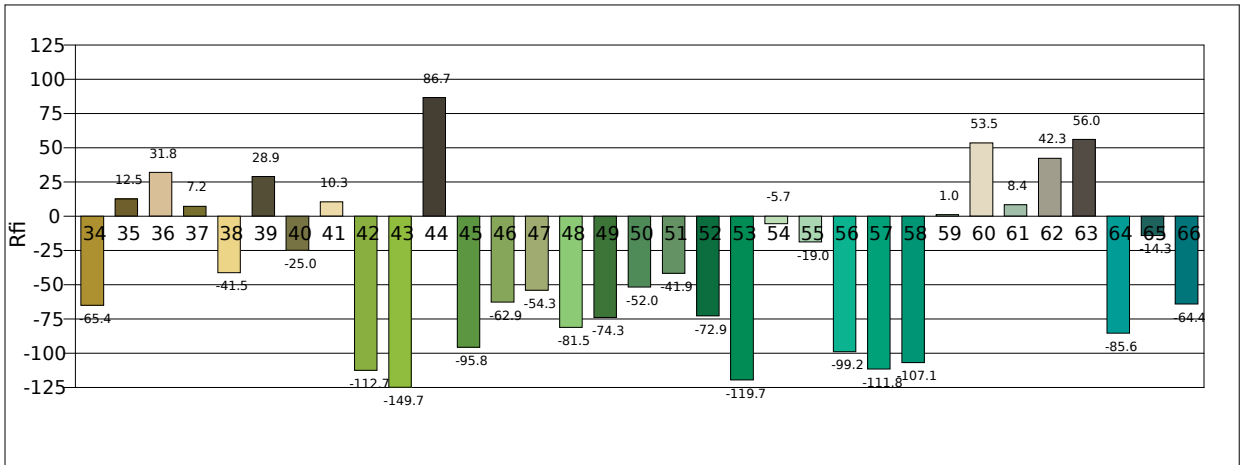
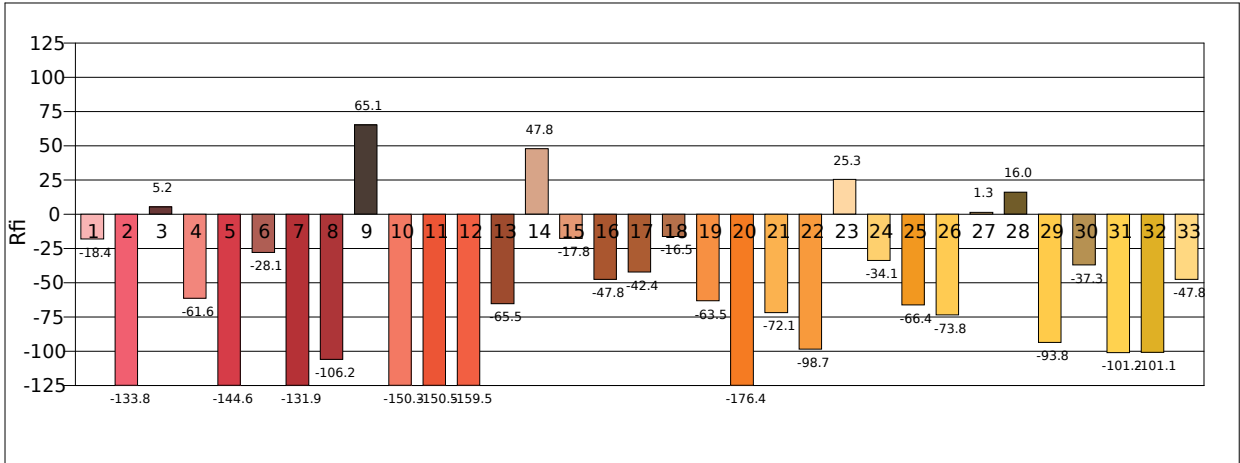
Temperature : 'C

Humidity : -%

Operator : -

Test Date : 2025-02-12

Remark :

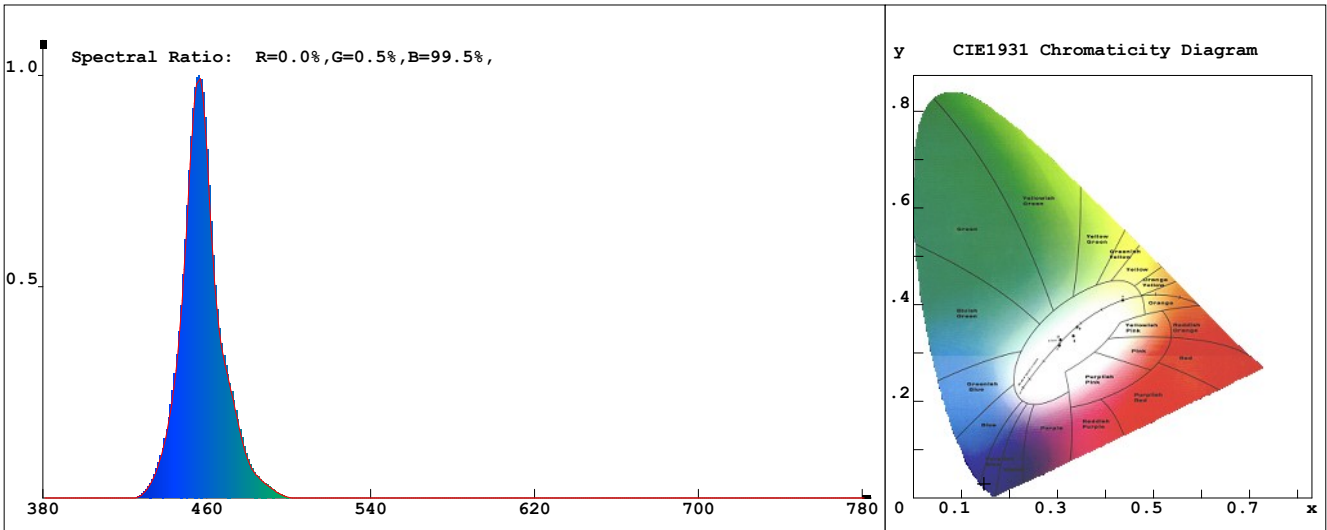


LED Test Report

Product Mark

Product Type : ORRGB-F52-576OR0 B
 Temperature : 'C
 Operator : -
 Remark:

Manufacturer : -
 Humidity : -%
 Test Date : 2025-02-12



Chroma Parameters

Chro.Coor.:x=0.1473 y=0.0296 u=0.1925 v=0.0580 duv=-0.0630
 CCT:100000K Dominant Wave.:458.6nm Purity:99.3% Centre Wave:455.3nm
 Flux RGB Ratio:R=0.0%,G=2.0%,B=98.0% Peak Wave:454.8nm Half Width:15.7nm

Rendering Index:Ra=-72.4 CRI=141.3

R1 =-24 R2 =-80 R3 =-182 R4 =-94 R5 =-6 R6 =-83 R7 =-68 R8 =-42
 R9 =-299 R10=-324 R11=-118 R12=-154 R13=-56 R14=-48 R15=-11
 PPF:1.947umol/s (400-700nm) PRF:0.5mW (400-700nm) PAR:0.4mW (400-700nm)

Photo Parameters

Flux:26.06lm Effi.:13.3lm/W Radiant:509.7mW Iv:0.0mcd
 Scotopic Flux:595.6Plm Effi.:0.0Plm/W S/P:22.9
 Efficiency:0.00 Effi Level:A++ (EU 874-2012) Photon Flux:1947.500umol/s (380-780nm)

Ele. Parameters

Forward Current:If=393.0mA Reverse Voltage:Vr=5.00V
 Forward Voltage:Vf=5.00V Reverse Current:Ir=0.00uA
 Power:P=1.971W

Instrument state

Instrument:Lisun LMS-8000 Integral Time: 127.368ms VPeak: 15336
 VDark: 1384 Scan Range: 380-780nm Product ID: 201508924

IES TM-30-2015 Test Report

Product Mark

Product Type : ORRGB-F52-576OR0 B

Manufacturer : -

Temperature : 'C

Humidity : -%

Operator : -

Test Date : 2025-02-12

Remark :

