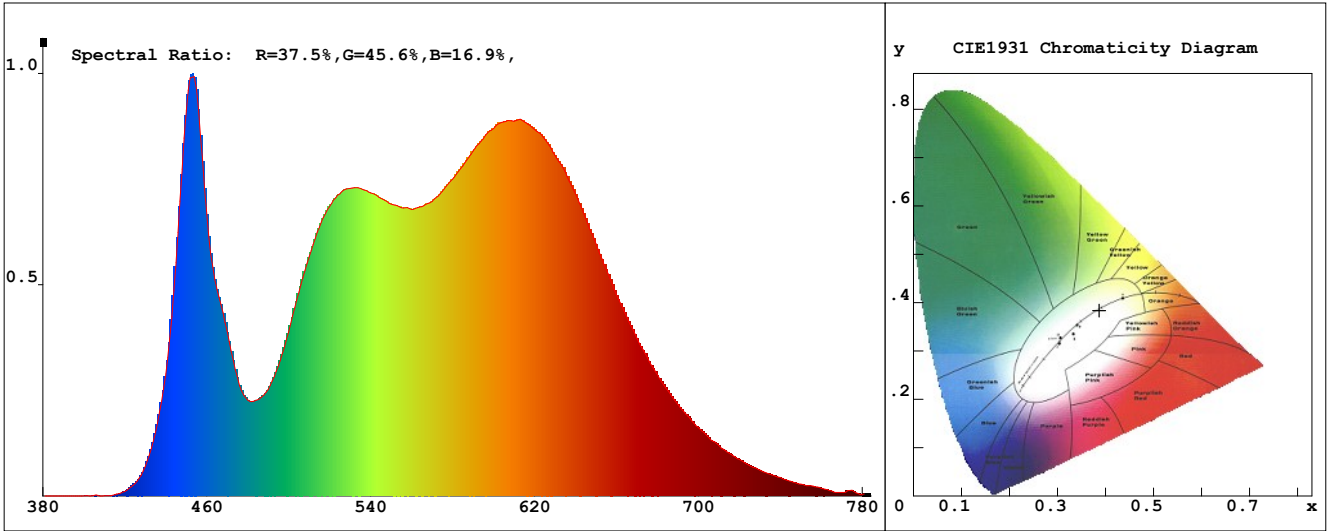


LED Test Report

Product Mark

Product Type : OR400-K52-3200R2-S1
 Temperature : 'C
 Operator : -
 Remark:

Manufacturer : -
 Humidity : -%
 Test Date : 2025-03-20



Chroma Parameters

Chro.Coor.:x=0.3868 y=0.3835 u=0.2266 v=0.3370 duv=0.0013
 CCT: 3881K Dominant Wave.:578.8nm Purity:31.2% Centre Wave:453.2nm
 Flux RGB Ratio:R=19.5%,G=78.2%,B=2.3% Peak Wave:451.6nm Half Width:20.3nm

Rendering Index:Ra= 91.3 CRI= 87.6

R1 =93	R2 =94	R3 =93	R4 =94	R5 =92	R6 =91	R7 =93	R8 =81
R9 =51	R10=83	R11=94	R12=66	R13=93	R14=96	R15=88	
PPF:12.724umol/s (400-700nm)			PRF:2.7mW (400-700nm)			PAR:2.3mW (400-700nm)	

Photo Parameters

Flux:832.05lm Effi.:103.05m/W Radiant:2763.4mW Iv:0.0mcd
 Scotopic Flux:1579.6Plm Effi.:0.0Plm/W S/P:1.7
 Efficiency:0.00 Effi Level:A++ (EU 874-2012) Photon Flux:13164.000umol/s (380-780nm)

Ele. Parameters

Forward Current:If=336.0mA Reverse Voltage:Vr=5.00V
 Forward Voltage:Vf=24.01V Reverse Current:Ir=0.00uA
 Power:P=8.011W

Instrument state

Instrument:Lisun LMS-8000 Integral Time: 161.383ms VPeak: 13432
 VDark: 1327 Scan Range: 380-780nm Product ID: 201508924

IES TM-30-2015 Test Report

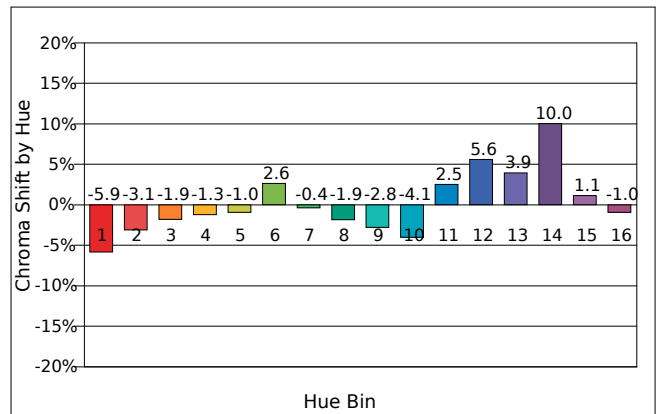
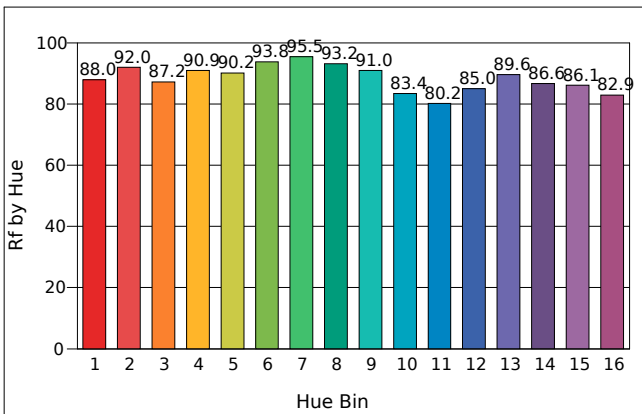
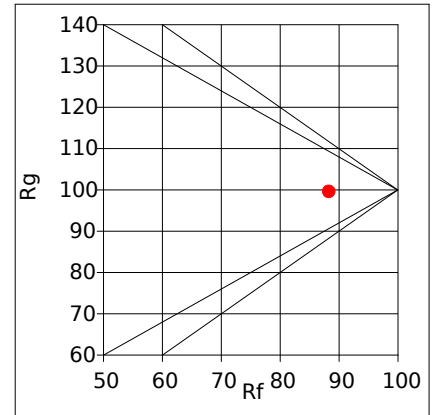
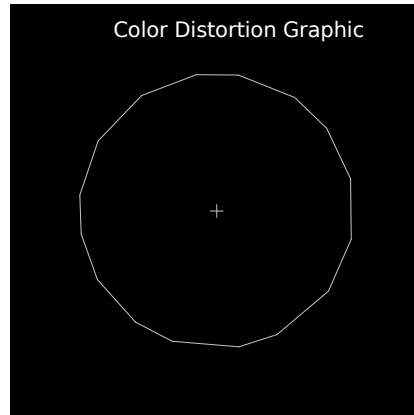
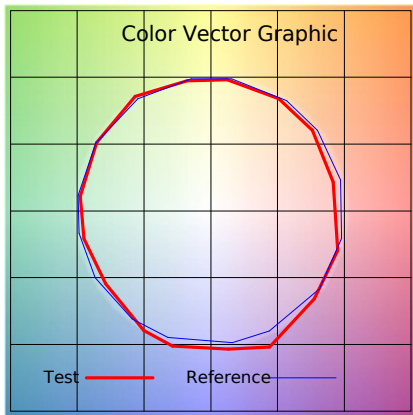
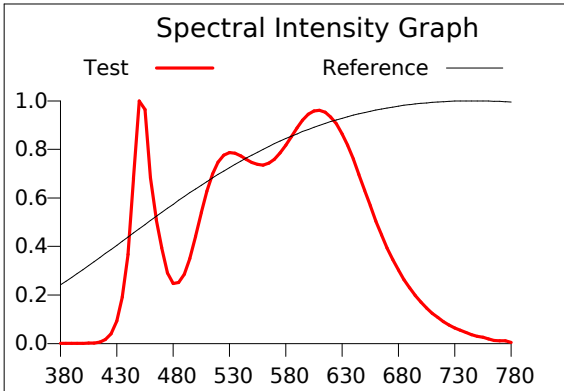
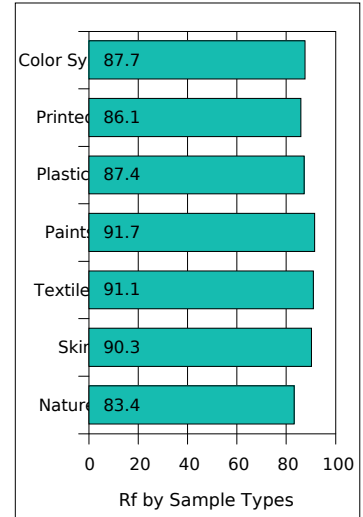
Product Mark

Product Type : OR400-K52-3200R2-S1
 Temperature : 'C
 Operator : -
 Remark :

Manufacturer : -
 Humidity : -%
 Test Date : 2025-03-20

Rf: 88.3 CCT(K): 3881 u': 0.2266
 Rg: 99.6 LER: 317.0 Duv: 0.0013 v': 0.3370

		Graphic Shifts (%)	
Hue Bin	Rf	Chroma	Hue
1	88.0	-5.9%	-0.7%
2	92.0	-3.1%	2.2%
3	87.2	-1.9%	5.5%
4	90.9	-1.3%	3.3%
5	90.2	-1.0%	3.0%
6	93.8	2.6%	0.9%
7	95.5	-0.4%	-0.8%
8	93.2	-1.9%	0.4%
9	91.0	-2.8%	4.6%
10	83.4	-4.1%	8.2%
11	80.2	2.5%	11.9%
12	85.0	5.6%	4.5%
13	89.6	3.9%	-3.8%
14	86.6	10.0%	-6.6%
15	86.1	1.1%	-8.3%
16	82.9	-1.0%	-9.4%



IES TM-30-2015 Test Report

Product Mark

Product Type : OR400-K52-320OR2-S1

Manufacturer : -

Temperature : 'C

Humidity : -%

Operator : -

Test Date : 2025-03-20

Remark :

