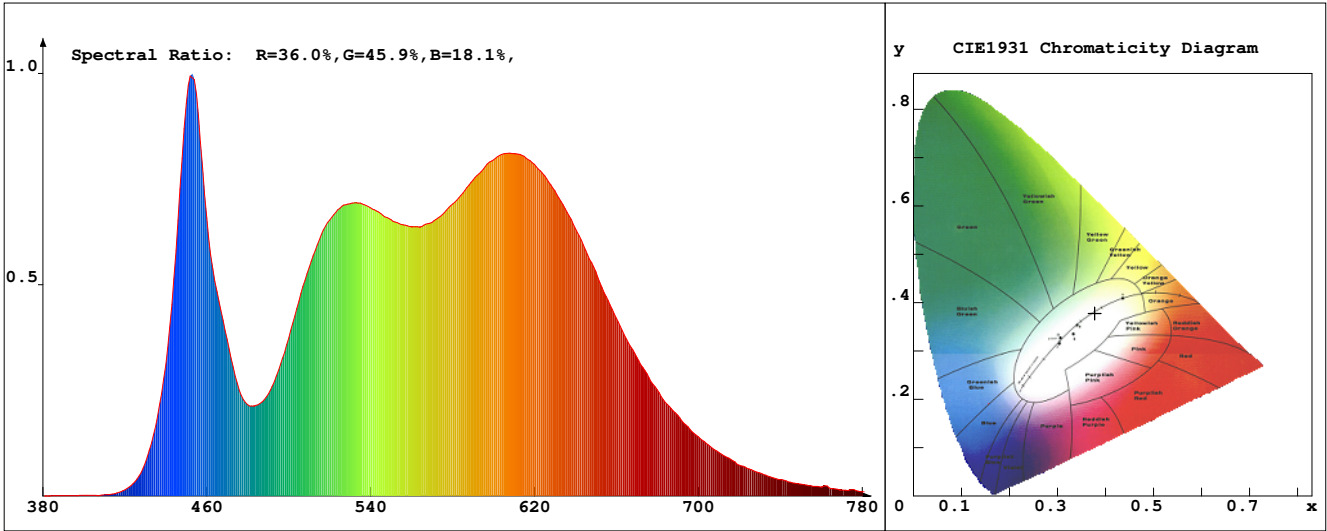


# LED Test Report

## Product Mark

Product Type : OR400-F52-600OR2  
 Temperature : 'C  
 Operator : -  
 Remark :

Manufacturer : -  
 Humidity : -%  
 Test Date : 2025-02-12



## Chroma Parameters

Chro.Coord.:x=0.3778 y=0.3776 u=0.2231 v=0.3344 duv=0.0012  
 CCT: 4078K Dominant Wave.:578.1nm Purity:26.7% Centre Wave:453.0nm  
 Flux RGB Ratio:R=18.9%,G=78.7%,B=2.4% Peak Wave:451.6nm Half Width:20.3nm

## Rendering Index:Ra= 91.2 CRI= 87.4

R1 =93	R2 =93	R3 =93	R4 =93	R5 =91	R6 =90	R7 =94	R8 =82
R9 =50	R10=83	R11=93	R12=66	R13=94	R14=95	R15=88	
PPF:27.990umol/s (400-700nm)			PRF:6.0mW (400-700nm)			PAR:5.1mW (400-700nm)	

## Photo Parameters

Flux:2017.37lm      Effi.:93.5lm/W      Radiant:6110.5mW      Iv:0.0mcd  
 Scotopic Flux:3553.0Plm      Effi.:0.0Plm/W      S/P:1.8  
 Efficiency:0.00      Effi Level:A++ (EU 874-2012)      Photon Flux:28956.500umol/s (380-780nm)

## Ele. Parameters

Forward Current:If=904.0mA      Reverse Voltage:Vr=5.00V  
 Forward Voltage:Vf=23.87V      Reverse Current:Ir=0.00uA  
 Power:P=21.601W

## Instrument state

Instrument:Lisun LMS-8000      Integral Time: 69.889ms      VPeak: 13720  
 VDark: 1296      Scan Range: 380-780nm      Product ID: 201508924

# IES TM-30-2015 Test Report

**Product Mark**

Product Type : OR400-F52-600OR2

Temperature : 'C

Operator : -

Remark :

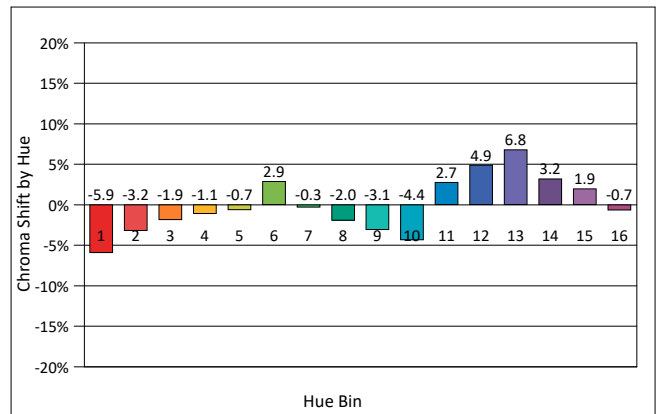
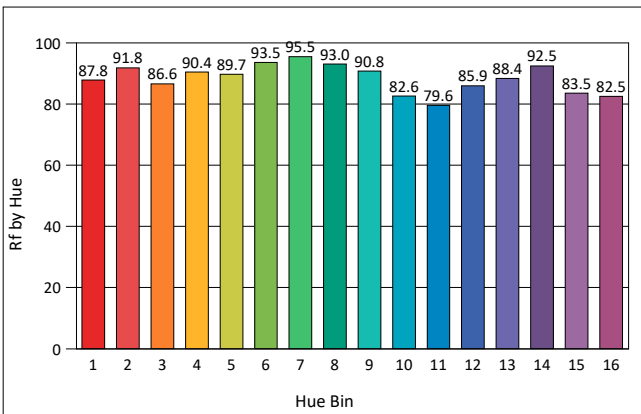
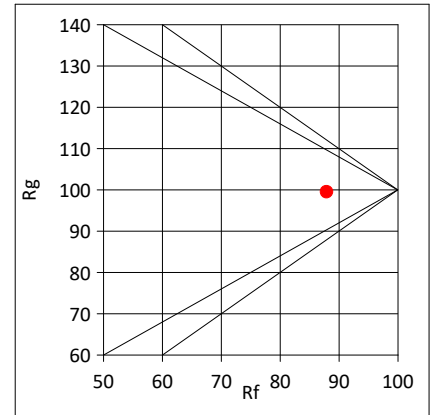
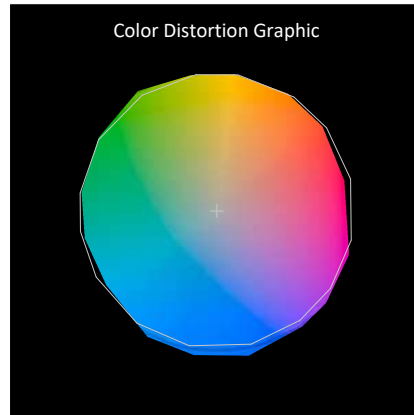
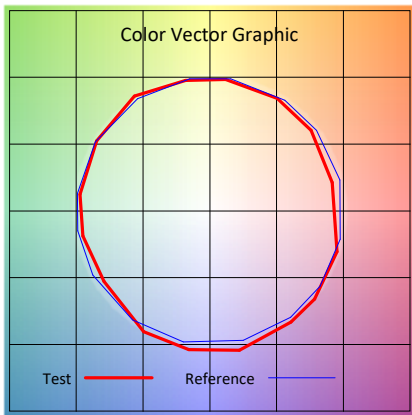
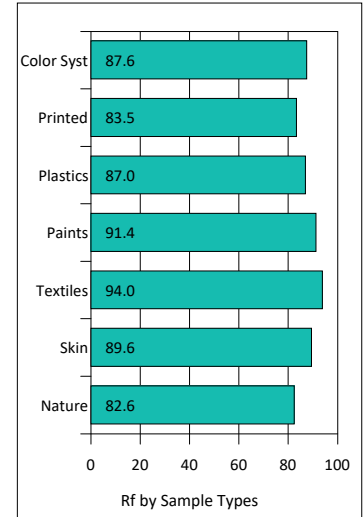
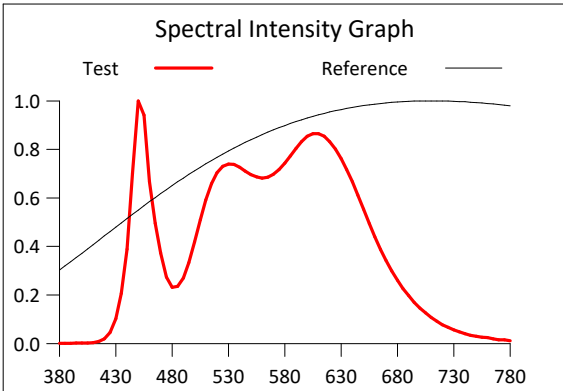
Manufacturer : -

Humidity : -%

Test Date : 2025-02-12

Rf: 87.9                      CCT(K): 4078              u': 0.2231  
 Rg: 99.5      LER: 316.5      Duv: 0.0012              v': 0.3344

Hue Bin	Rf	Graphic Shifts (%)	
		Chroma	Hue
1	87.8	-5.9%	-0.8%
2	91.8	-3.2%	2.3%
3	86.6	-1.9%	5.8%
4	90.4	-1.1%	3.7%
5	89.7	-0.7%	3.2%
6	93.5	2.9%	0.9%
7	95.5	-0.3%	-1.0%
8	93.0	-2.0%	0.2%
9	90.8	-3.1%	4.6%
10	82.6	-4.4%	8.6%
11	79.6	2.7%	12.0%
12	85.9	4.9%	5.3%
13	88.4	6.8%	-4.2%
14	92.5	3.2%	-1.8%
15	83.5	1.9%	-10.5%
16	82.5	-0.7%	-9.8%



# IES TM-30-2015 Test Report

**Product Mark**

Product Type : OR400-F52-600OR2

Manufacturer : -

Temperature : 'C

Humidity : -%

Operator : -

Test Date : 2025-02-12

Remark :

