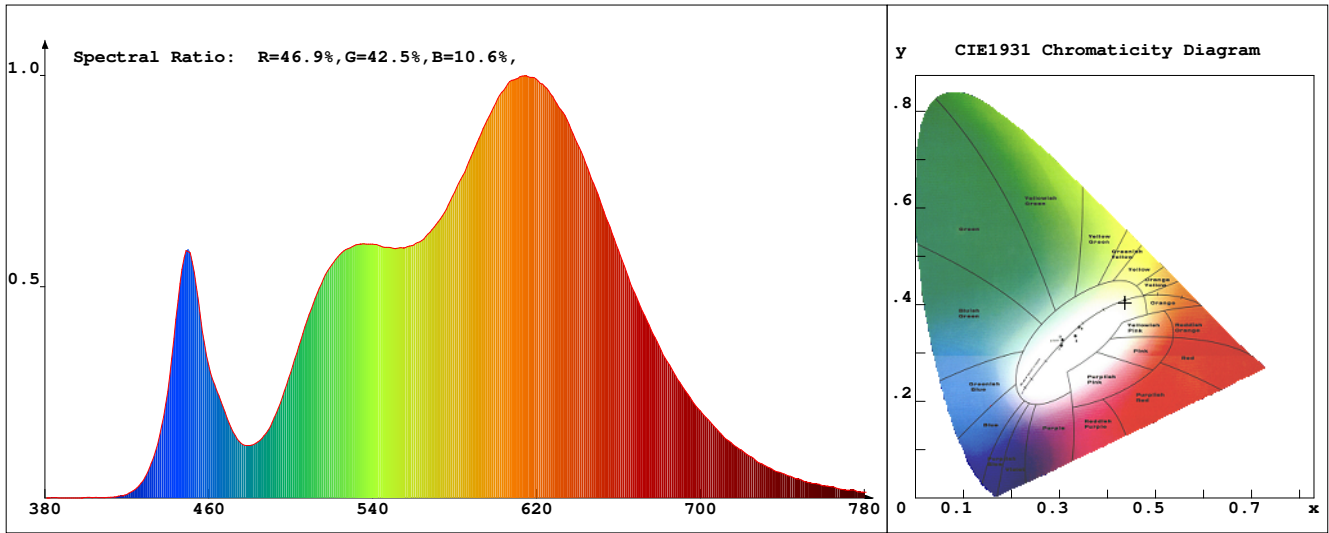


# LED Test Report

## Product Mark

Product Type : OR400-F52-480OR2-W8  
 Temperature : 'C  
 Operator : -  
 Remark :

Manufacturer : -  
 Humidity : -%  
 Test Date : 2025-02-12



## Chroma Parameters

Chro.Coor.:x=0.4365 y=0.4036 u=0.2505 v=0.3474 duv=-0.0001  
 CCT: 3004K Dominant Wave.:582.8nm Purity:52.2% Centre Wave:589.3nm  
 Flux RGB Ratio:R=23.8%,G=74.9%,B=1.4% Peak Wave:613.6nm Half Width:152.2nm

## Rendering Index:Ra= 91.8 CRI= 88.7

R1 =94	R2 =95	R3 =95	R4 =94	R5 =93	R6 =94	R7 =91	R8 =79
R9 =48	R10=86	R11=94	R12=79	R13=94	R14=96	R15=87	
PPF:15.585umol/s (400-700nm)			PRF:3.2mW (400-700nm)			PAR:2.8mW (400-700nm)	

## Photo Parameters

Flux:1066.30lm      Effi.:118.5lm/W      Radiant:3334.1mW      Iv:0.0mcd  
 Scotopic Flux:1475.6Plm      Effi.:0.0Plm/W      S/P:1.4  
 Efficiency:0.00      Effi Level:A++ (EU 874-2012)      Photon Flux:16342.000umol/s (380-780nm)

## Ele. Parameters

Forward Current:If=375.0mA      Reverse Voltage:Vr=5.00V  
 Forward Voltage:Vf=24.00V      Reverse Current:Ir=0.00uA  
 Power:P=9.011W

## Instrument state

Instrument:Lisun LMS-8000      Integral Time: 147.869ms      VPeak: 13528  
 VDark: 1316      Scan Range: 380-780nm      Product ID: 201508924

# IES TM-30-2015 Test Report

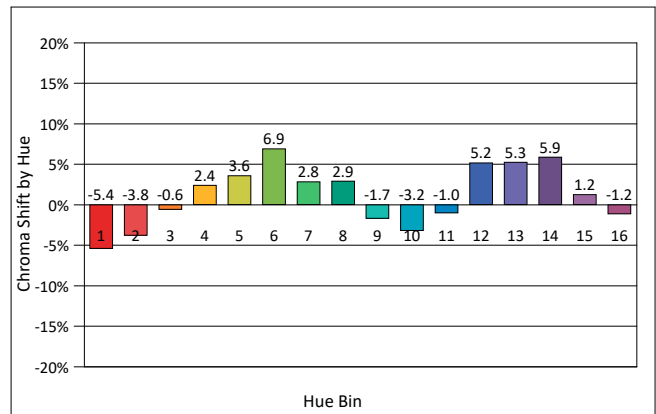
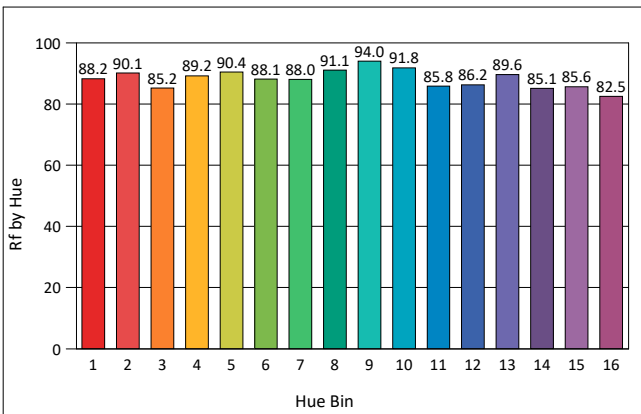
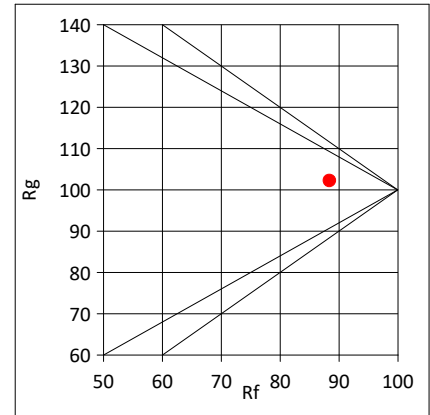
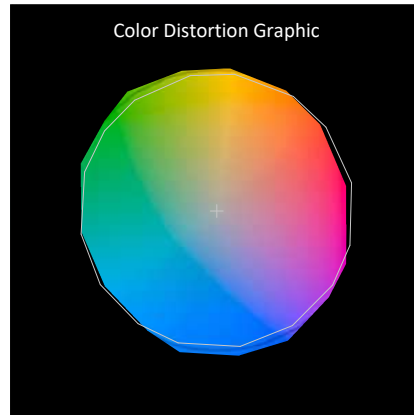
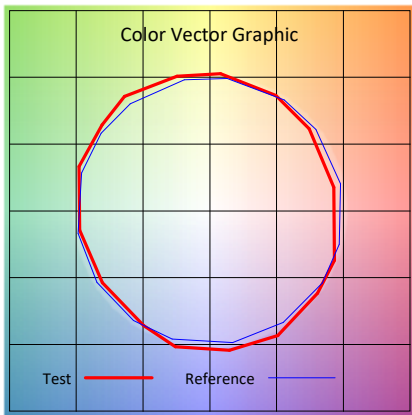
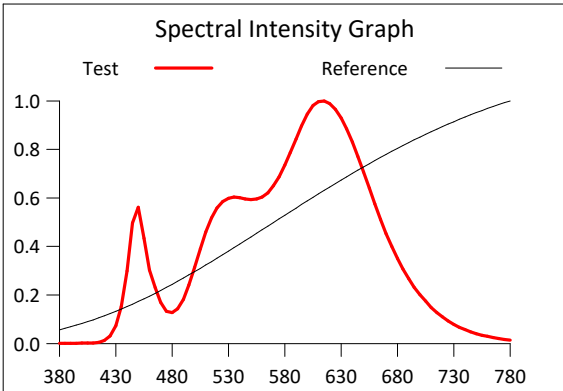
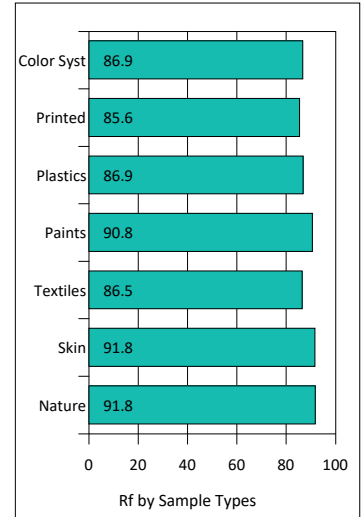
**Product Mark**

Product Type : OR400-F52-480R2-W8  
 Temperature : 'C  
 Operator : -  
 Remark :

Manufacturer : -  
 Humidity : -%  
 Test Date : 2025-02-12

Rf: 88.4      CCT(K): 3004      u': 0.2505  
 Rg: 102.2    LER: 311.1    Duv: -0.0001    v': 0.3474

Hue Bin	Rf	Graphic Shifts (%)	
		Chroma	Hue
1	88.2	-5.4%	-1.7%
2	90.1	-3.8%	3.3%
3	85.2	-0.6%	6.9%
4	89.2	2.4%	5.5%
5	90.4	3.6%	4.8%
6	88.1	6.9%	0.5%
7	88.0	2.8%	-5.8%
8	91.1	2.9%	-4.3%
9	94.0	-1.7%	-2.2%
10	91.8	-3.2%	2.6%
11	85.8	-1.0%	8.5%
12	86.2	5.2%	3.3%
13	89.6	5.3%	-3.4%
14	85.1	5.9%	-9.0%
15	85.6	1.2%	-8.4%
16	82.5	-1.2%	-12.4%



# IES TM-30-2015 Test Report

**Product Mark**

Product Type : OR400-F52-480OR2-W8

Manufacturer : -

Temperature : 'C

Humidity : -%

Operator : -

Test Date : 2025-02-12

Remark :

