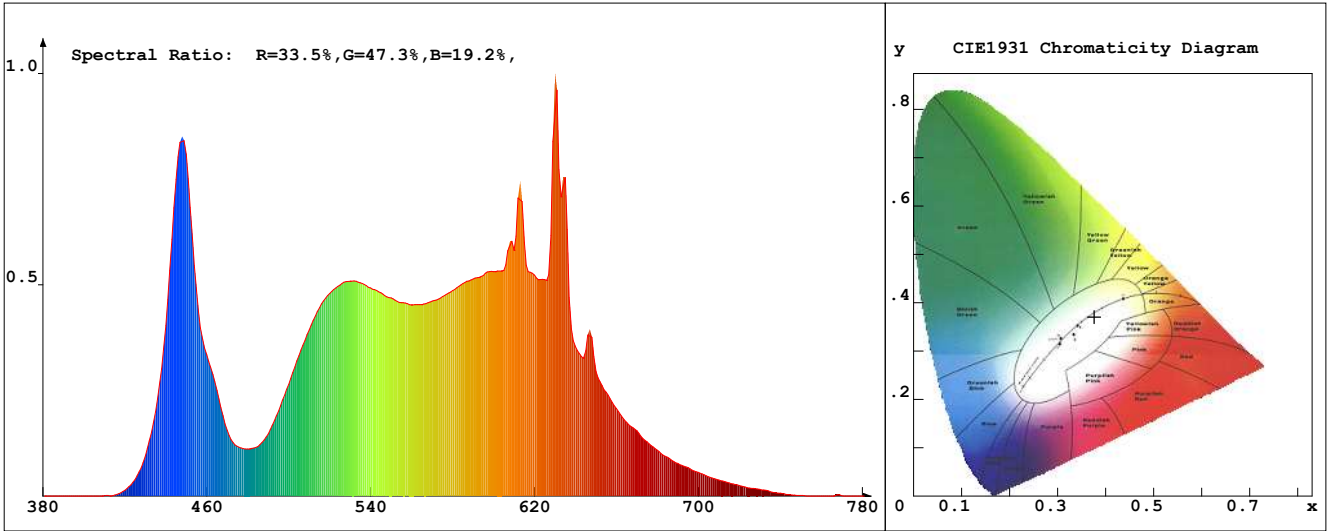


LED Test Report

Product Mark

Product Type : OR400-F52-480OR2-W10
 Temperature : 'C
 Operator : -
 Remark:

Manufacturer : -
 Humidity : -%
 Test Date : 2025-01-28



Chroma Parameters

Chro.Coor.:x=0.3763 y=0.3704 u=0.2249 v=0.3321 duv=-0.0018
 CCT: 4070K Dominant Wave.:579.9nm Purity:24.1% Centre Wave:630.3nm
 Flux RGB Ratio:R=19.5%,G=78.4%,B=2.1% Peak Wave:629.4nm Half Width:10.8nm

Rendering Index:Ra= 90.5 CRI= 87.0

| | | | | | | | |
|------------------------------|--------|--------|-----------------------|--------|--------|-----------------------|--------|
| R1 =95 | R2 =92 | R3 =87 | R4 =90 | R5 =93 | R6 =90 | R7 =92 | R8 =86 |
| R9 =58 | R10=79 | R11=89 | R12=70 | R13=94 | R14=92 | R15=91 | |
| PPF:26.180umol/s (400-700nm) | | | PRF:5.6mW (400-700nm) | | | PAR:4.9mW (400-700nm) | |

Photo Parameters

Flux:1960.15lm Effi.:148.9lm/W Radiant:5670.3mW Iv:0.0mcd
 Scotopic Flux:3395.2Plm Effi.:0.0Plm/W S/P:1.7
 Efficiency:0.00 Effi Level:A++ (EU 874-2012) Photon Flux:26530.000umol/s (380-780nm)

Ele. Parameters

Forward Current:If=549.0mA Reverse Voltage:Vr=5.00V
 Forward Voltage:Vf=23.97V Reverse Current:Ir=0.00uA
 Power:P=13.190W

Instrument state

Instrument:Lisun LMS-8000 Integral Time: 44.085ms VPeak: 13704
 VDark: 1366 Scan Range: 380-780nm Product ID: 201508924

IES TM-30-2015 Test Report

Product Mark

Product Type : OR400-F52-480R2-W10

Temperature : 'C

Operator : -

Remark :

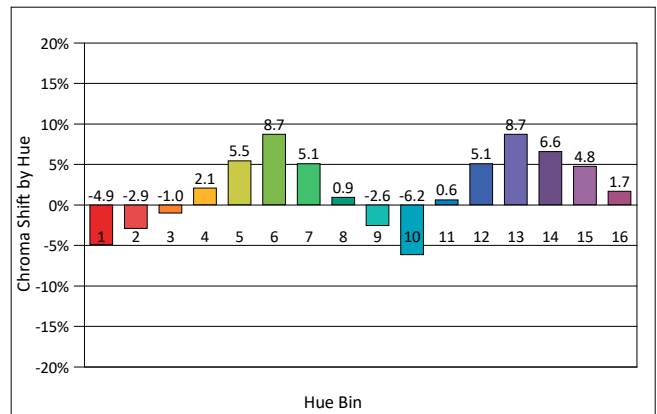
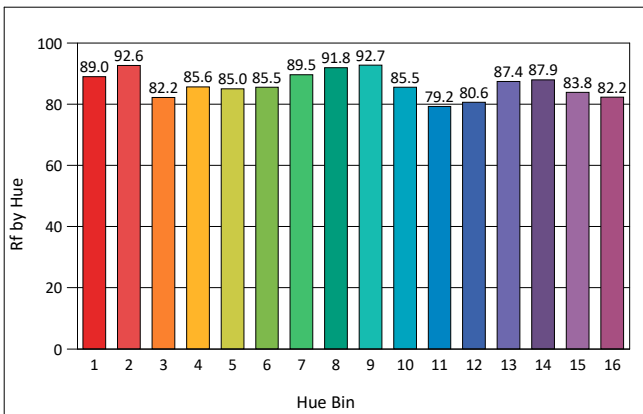
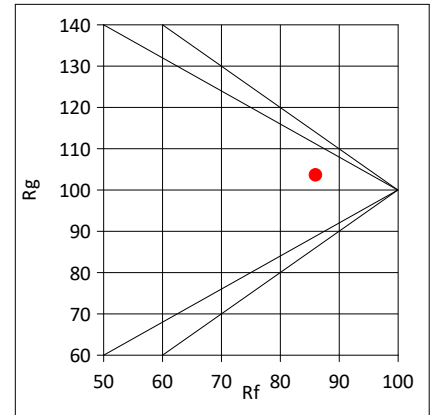
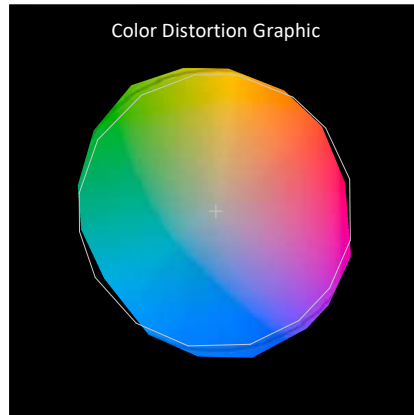
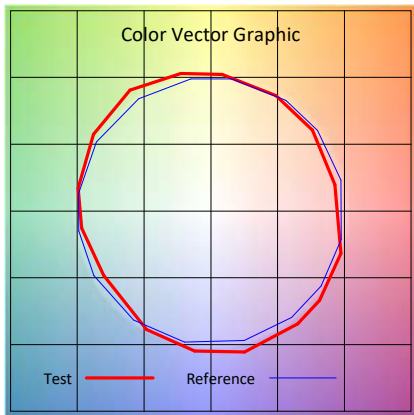
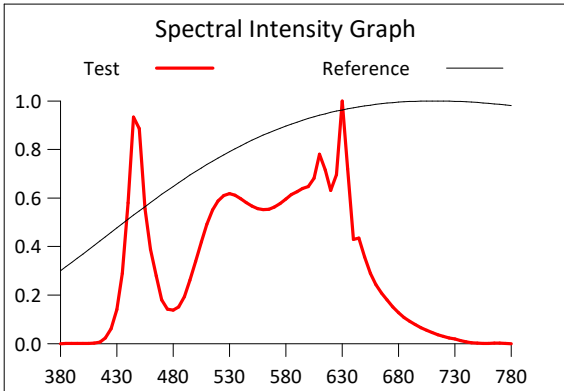
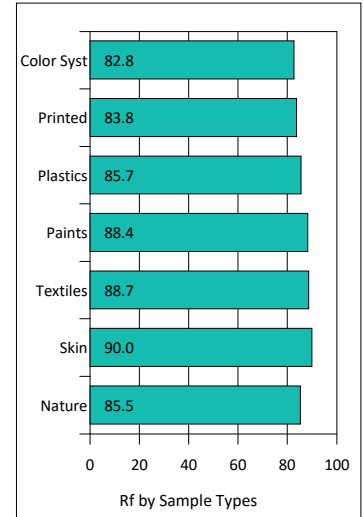
Manufacturer : -

Humidity : -%

Test Date : 2025-01-28

Rf: 86.0 CCT(K): 4070 u': 0.2249
 Rg: 103.6 LER: 328.2 Duv: -0.0018 v': 0.3321

| Hue Bin | Rf | Graphic Shifts (%) | |
|---------|------|--------------------|--------|
| | | Chroma | Hue |
| 1 | 89.0 | -4.9% | -2.5% |
| 2 | 92.6 | -2.9% | 2.4% |
| 3 | 82.2 | -1.0% | 8.4% |
| 4 | 85.6 | 2.1% | 7.6% |
| 5 | 85.0 | 5.5% | 6.4% |
| 6 | 85.5 | 8.7% | 1.8% |
| 7 | 89.5 | 5.1% | -3.6% |
| 8 | 91.8 | 0.9% | -4.2% |
| 9 | 92.7 | -2.6% | -1.9% |
| 10 | 85.5 | -6.2% | 4.2% |
| 11 | 79.2 | 0.6% | 12.3% |
| 12 | 80.6 | 5.1% | 8.8% |
| 13 | 87.4 | 8.7% | -1.4% |
| 14 | 87.9 | 6.6% | 1.1% |
| 15 | 83.8 | 4.8% | -9.6% |
| 16 | 82.2 | 1.7% | -10.4% |



IES TM-30-2015 Test Report

Product Mark

Product Type : OR400-F52-480R2-W10

Manufacturer : -

Temperature : 'C

Humidity : -%

Operator : -

Test Date : 2025-01-28

Remark :

