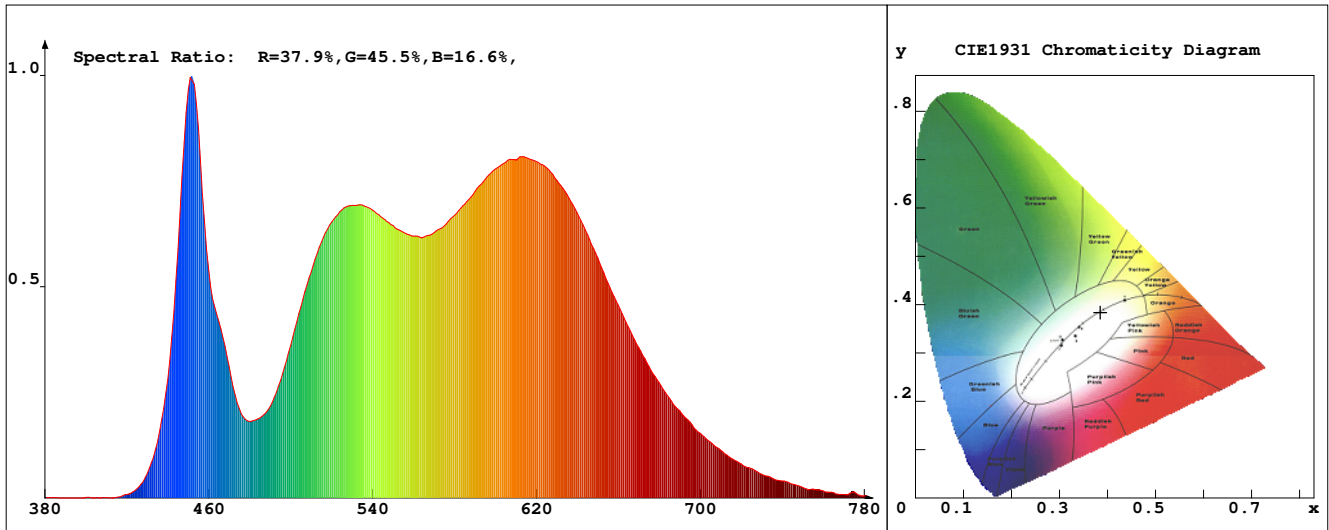


LED Test Report

Product Mark

Product Type : OR400-F52-4000RO-W5-S1 Manufacturer : -
 Temperature : 'C Humidity : -%
 Operator : - Test Date : 2025-02-12
 Remark :



Chroma Parameters

Chro.Coor.:x=0.3848 y=0.3841 u=0.2251 v=0.3369 duv=0.0021
 CCT: 3939K Dominant Wave.:578.2nm Purity:30.8% Centre Wave:451.4nm
 Flux RGB Ratio:R=19.4%,G=78.4%,B=2.2% Peak Wave:450.6nm Half Width:17.1nm

Rendering Index:Ra= 91.8 CRI= 88.1

R1 =95	R2 =93	R3 =91	R4 =95	R5 =92	R6 =90	R7 =94	R8 =85
R9 =58	R10=82	R11=93	R12=65	R13=95	R14=94	R15=90	
PPF: 4.566umol/s (400-700nm)			PRF: 1.0mW (400-700nm)			PAR: 0.8mW (400-700nm)	

Photo Parameters

Flux:323.50lm Effi.:59.9lm/W Radiant:991.6mW Iv:0.0mcd
 Scotopic Flux:555.3Plm Effi.:0.0Plm/W S/P:1.7
 Efficiency:0.00 Effi Level:A++ (EU 874-2012) Photon Flux:4725.650umol/s (380-780nm)

Ele. Parameters

Forward Current:If=1095.0mA Reverse Voltage:Vr=5.00V
 Forward Voltage:Vf=4.93V Reverse Current:Ir=0.00uA
 Power:P=5.401W

Instrument state

Instrument:Lisun LMS-8000 Integral Time: 462.903ms VPeak: 14952
 VDark: 1420 Scan Range: 380-780nm Product ID: 201508924

IES TM-30-2015 Test Report

Product Mark

Product Type : OR400-F52-4000RO-W5-S1

Manufacturer : -

Temperature : 'C

Humidity : -%

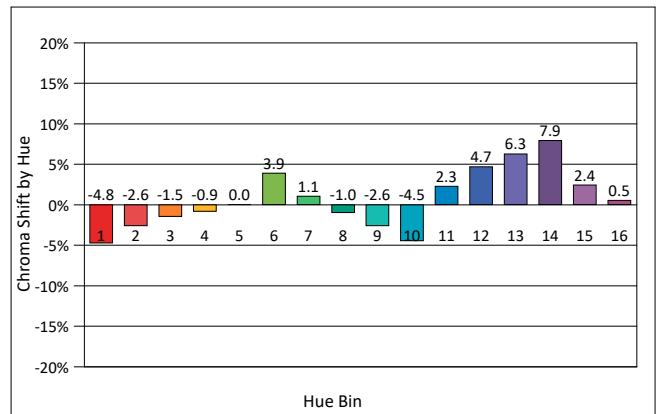
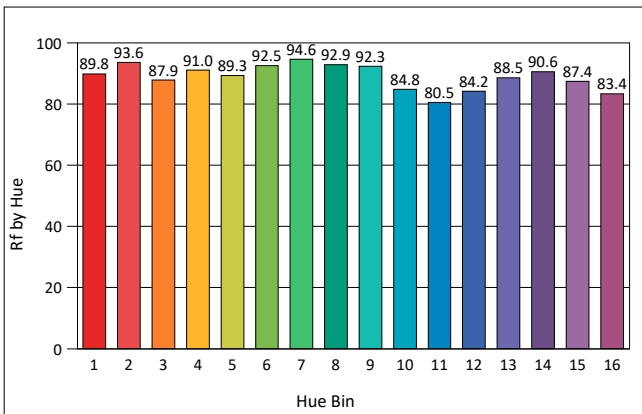
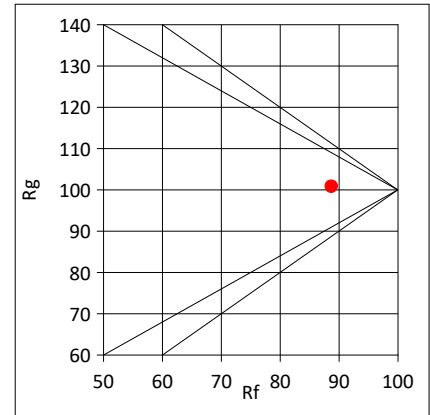
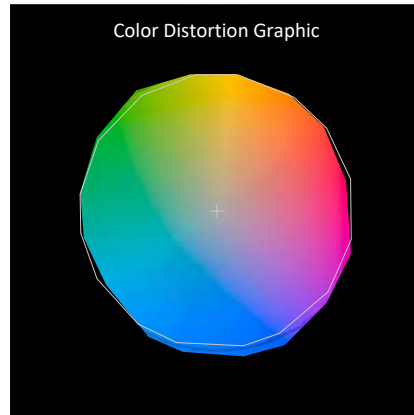
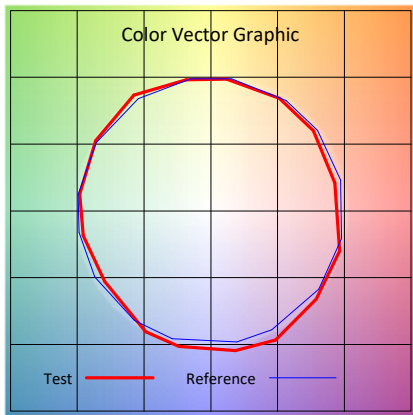
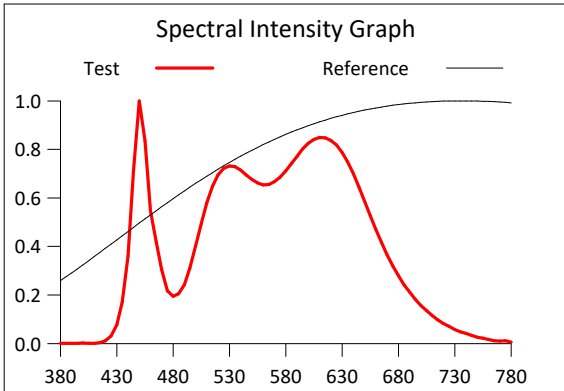
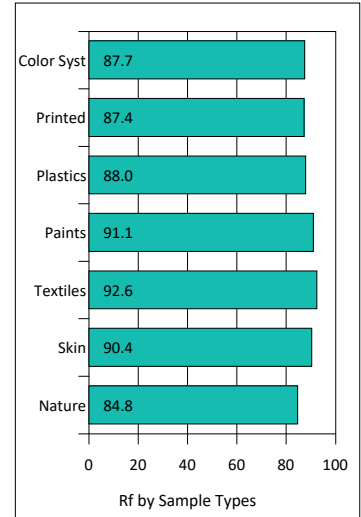
Operator : -

Test Date : 2025-02-12

Remark :

Rf: 88.7 CCT(K): 3939 u': 0.2251
 Rg: 100.8 LER: 315.6 Duv: 0.0021 v': 0.3369

Hue Bin	Rf	Graphic Shifts (%)	
		Chroma	Hue
1	89.8	-4.8%	-1.3%
2	93.6	-2.6%	1.5%
3	87.9	-1.5%	5.2%
4	91.0	-0.9%	3.7%
5	89.3	0.0%	3.6%
6	92.5	3.9%	1.3%
7	94.6	1.1%	-1.2%
8	92.9	-1.0%	-0.7%
9	92.3	-2.6%	3.0%
10	84.8	-4.5%	7.1%
11	80.5	2.3%	11.6%
12	84.2	4.7%	6.2%
13	88.5	6.3%	-2.3%
14	90.6	7.9%	-1.9%
15	87.4	2.4%	-7.3%
16	83.4	0.5%	-9.5%



IES TM-30-2015 Test Report

Product Mark

Product Type : OR400-F52-4000RO-W5-S1

Manufacturer : -

Temperature : 'C

Humidity : -%

Operator : -

Test Date : 2025-02-12

Remark :

