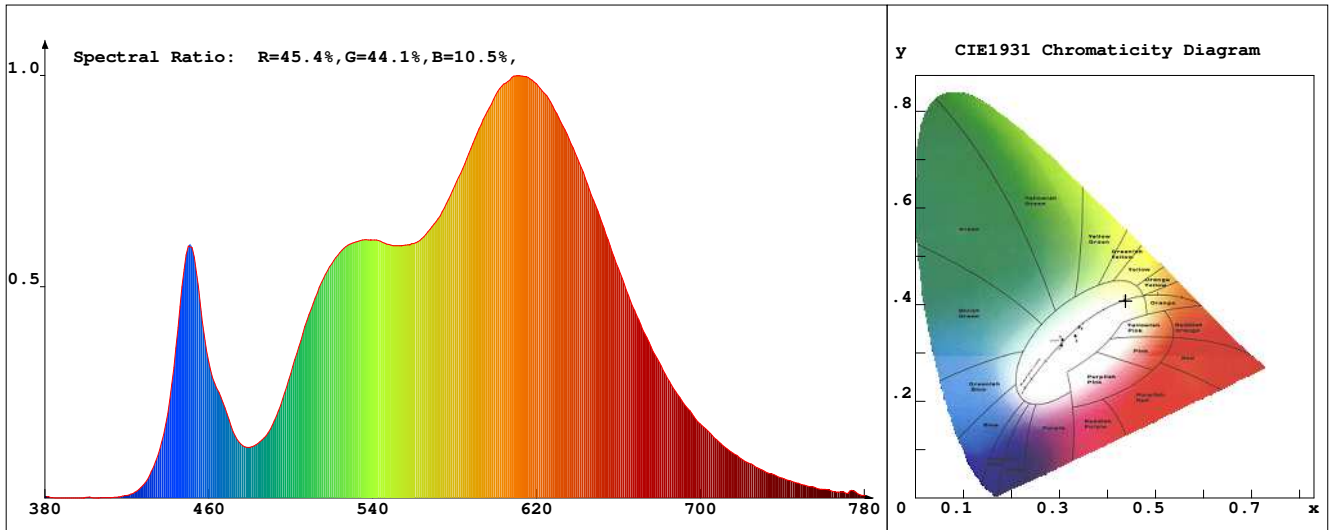


LED Test Report

Product Mark

Product Type : OR300-FA2-480R2A
 Temperature : 'C
 Operator : -
 Remark :

Manufacturer : -
 Humidity : -%
 Test Date : 2025-03-20



Chroma Parameters

Chro.Coor.:x=0.4374 y=0.4078 u=0.2493 v=0.3486 duv=0.0014
 CCT: 3022K Dominant Wave.:582.2nm Purity:53.7% Centre Wave:587.6nm
 Flux RGB Ratio:R=23.3%,G=75.4%,B=1.4% Peak Wave:613.6nm Half Width:149.1nm

Rendering Index:Ra= 90.0 CRI= 86.6

R1 =91	R2 =93	R3 =94	R4 =94	R5 =92	R6 =93	R7 =89	R8 =74
R9 =38	R10=83	R11=95	R12=75	R13=91	R14=96	R15=83	
PPF:10.040umol/s (400-700nm)			PRF:2.1mW (400-700nm)			PAR:1.8mW (400-700nm)	

Photo Parameters

Flux:704.56lm Effi.:94.4lm/W Radiant:2137.9mW Iv:0.0mcd
 Scotopic Flux:969.5Plm Effi.:0.0Plm/W S/P:1.4
 Efficiency:0.00 Effi Level:A++ (EU 874-2012) Photon Flux:10444.400umol/s (380-780nm)

Ele. Parameters

Forward Current:If=311.0mA Reverse Voltage:Vr=5.00V
 Forward Voltage:Vf=24.00V Reverse Current:Ir=0.00uA
 Power:P=7.470W

Instrument state

Instrument:Lisun LMS-8000 Integral Time: 267.347ms VPeak: 14904
 VDark: 1498 Scan Range: 380-780nm Product ID: 201508924

IES TM-30-2015 Test Report

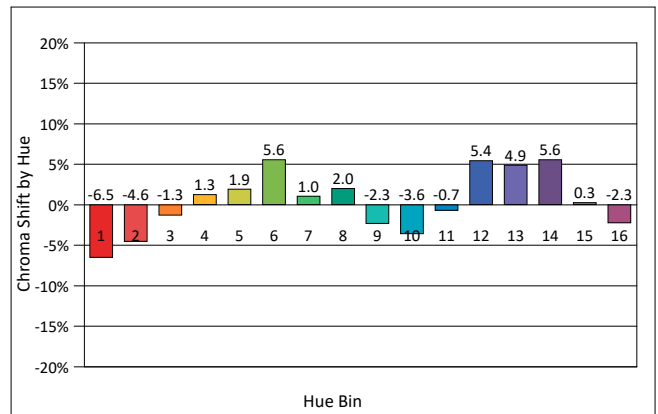
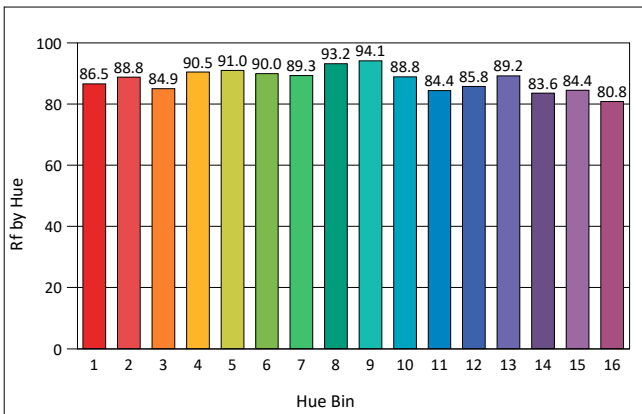
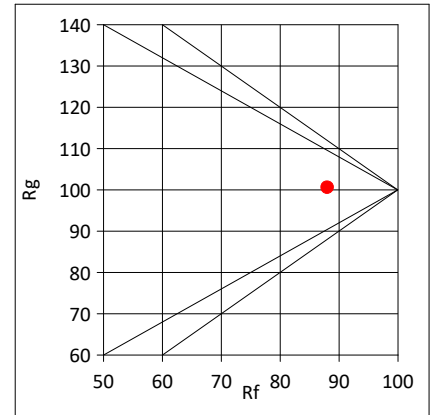
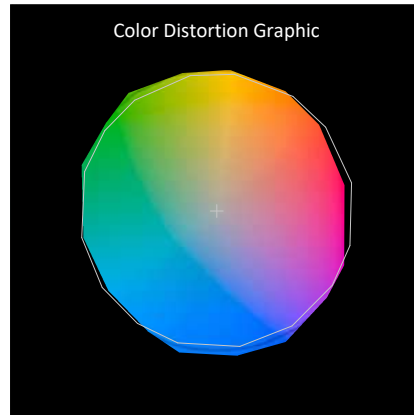
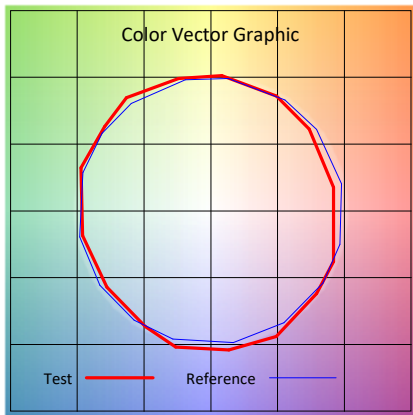
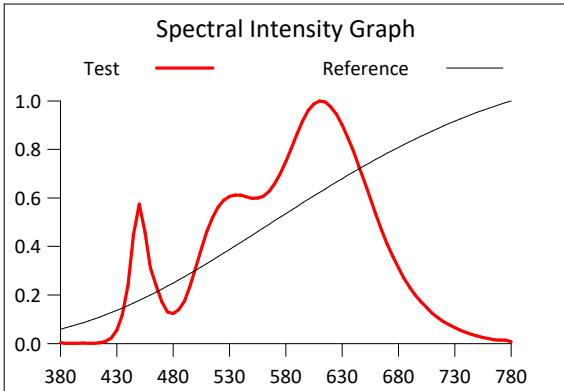
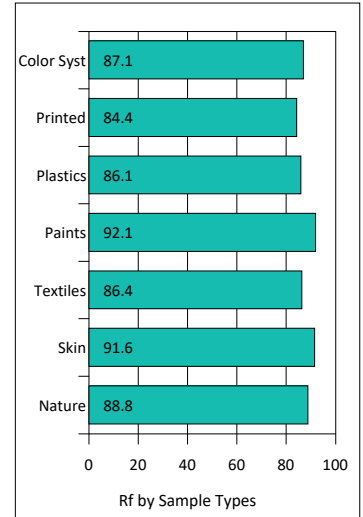
Product Mark

Product Type : OR300-FA2-480OR2A
 Temperature : 'C
 Operator : -
 Remark :

Manufacturer : -
 Humidity : -%
 Test Date : 2025-03-20

Rf: 88.0 CCT(K): 3022 u': 0.2493
 Rg: 100.6 LER: 321.0 Duv: 0.0014 v': 0.3486

Hue Bin	Rf	Graphic Shifts (%)	
		Chroma	Hue
1	86.5	-6.5%	-1.5%
2	88.8	-4.6%	3.5%
3	84.9	-1.3%	6.8%
4	90.5	1.3%	5.0%
5	91.0	1.9%	4.6%
6	90.0	5.6%	0.5%
7	89.3	1.0%	-5.1%
8	93.2	2.0%	-3.3%
9	94.1	-2.3%	-0.4%
10	88.8	-3.6%	4.0%
11	84.4	-0.7%	9.7%
12	85.8	5.4%	3.1%
13	89.2	4.9%	-4.2%
14	83.6	5.6%	-10.5%
15	84.4	0.3%	-9.2%
16	80.8	-2.3%	-13.5%



IES TM-30-2015 Test Report

Product Mark

Product Type : OR300-FA2-480OR2A

Manufacturer : -

Temperature : 'C

Humidity : -%

Operator : -

Test Date : 2025-03-20

Remark :

