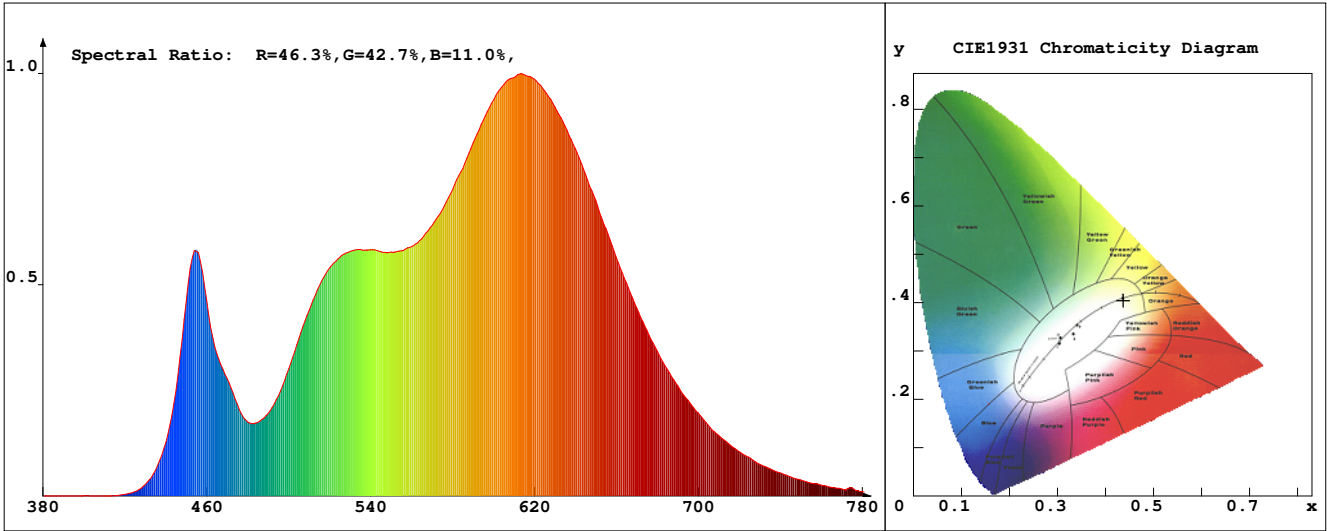


LED Test Report

Product Mark

Product Type : OR300-F52-528OR2-W8 Free CutManufacturer : -
 Temperature : 'C Humidity : -%
 Operator : - Test Date : 2025-02-12
 Remark :



Chroma Parameters

Chro.Coor.:x=0.4367 y=0.4044 u=0.2503 v=0.3477 duv=0.0001
 CCT: 3006K Dominant Wave.:582.7nm Purity:52.5% Centre Wave:589.2nm
 Flux RGB Ratio:R=23.7%,G=74.6%,B=1.7% Peak Wave:612.6nm Half Width:149.9nm

Rendering Index:Ra= 92.3 CRI= 89.5

R1 =94 R2 =96 R3 =98 R4 =96 R5 =94 R6 =96 R7 =89 R8 =76
 R9 =46 R10=90 R11=97 R12=77 R13=95 R14=98 R15=86
 PPF:11.540umol/s (400-700nm) PRF:2.4mW (400-700nm) PAR:2.1mW (400-700nm)

Photo Parameters

Flux:796.79lm Effi.:68.2lm/W Radiant:2464.0mW Iv:0.0mcd
 Scotopic Flux:1128.4Plm Effi.:0.0Plm/W S/P:1.4
 Efficiency:0.00 Effi Level:A++ (EU 874-2012) Photon Flux:12064.500umol/s (380-780nm)

Ele. Parameters

Forward Current:If=493.0mA Reverse Voltage:Vr=5.00V
 Forward Voltage:Vf=23.71V Reverse Current:Ir=0.00uA
 Power:P=11.700W

Instrument state

Instrument:Lisun LMS-8000 Integral Time: 229.936ms VPeak: 15128
 VDark: 1260 Scan Range: 380-780nm Product ID: 201508924

IES TM-30-2015 Test Report

Product Mark

Product Type : OR300-F52-528OR2-W8 Free CutManufacturer : -

Temperature : 'C

Humidity : -%

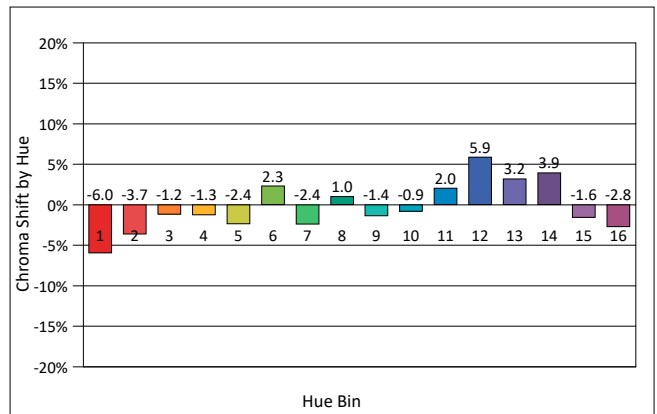
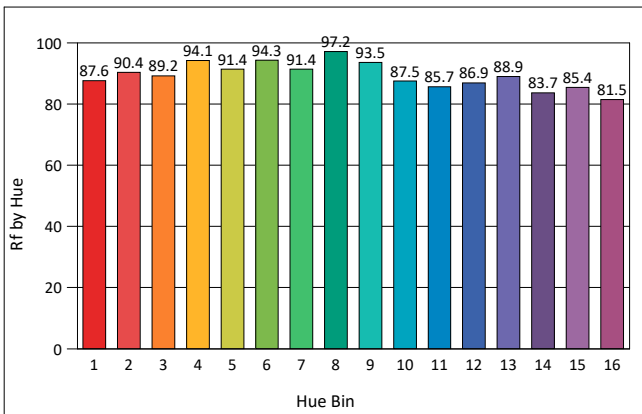
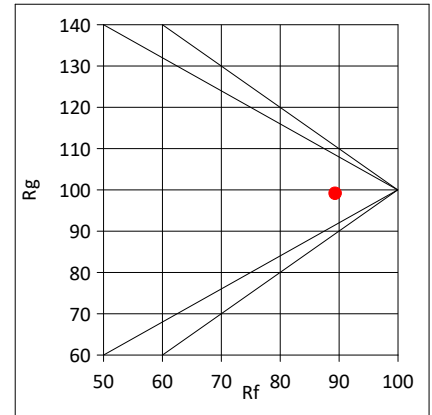
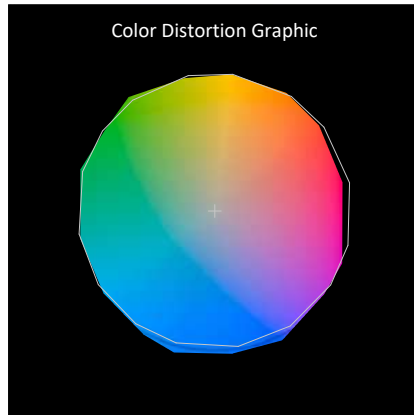
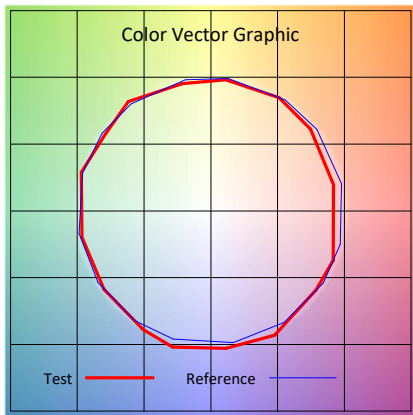
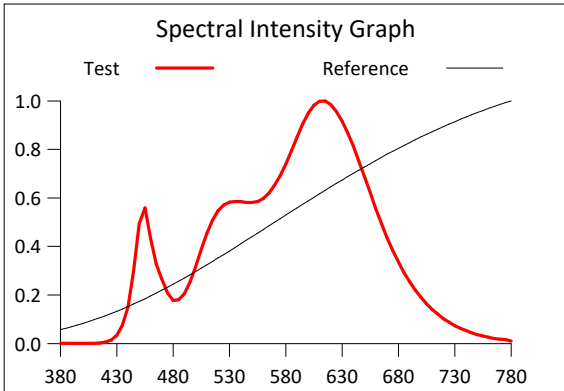
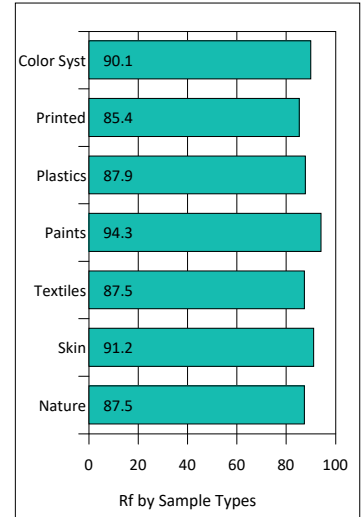
Operator : -

Test Date : 2025-02-12

Remark :

Rf: 89.4 CCT(K): 3006 u': 0.2503
 Rg: 99.1 LER: 313.0 Duv: 0.0001 v': 0.3477

Hue Bin	Rf	Graphic Shifts (%)	
		Chroma	Hue
1	87.6	-6.0%	0.3%
2	90.4	-3.7%	2.9%
3	89.2	-1.2%	4.6%
4	94.1	-1.3%	1.6%
5	91.4	-2.4%	2.6%
6	94.3	2.3%	0.8%
7	91.4	-2.4%	-0.9%
8	97.2	1.0%	-0.3%
9	93.5	-1.4%	3.1%
10	87.5	-0.9%	7.0%
11	85.7	2.0%	9.1%
12	86.9	5.9%	0.6%
13	88.9	3.2%	-6.4%
14	83.7	3.9%	-11.3%
15	85.4	-1.6%	-7.6%
16	81.5	-2.8%	-12.8%



IES TM-30-2015 Test Report

Product Mark

Product Type : OR300-F52-528OR2-W8 Free CutManufacturer : -

Temperature : 'C

Humidity : -%

Operator : -

Test Date : 2025-02-12

Remark :

