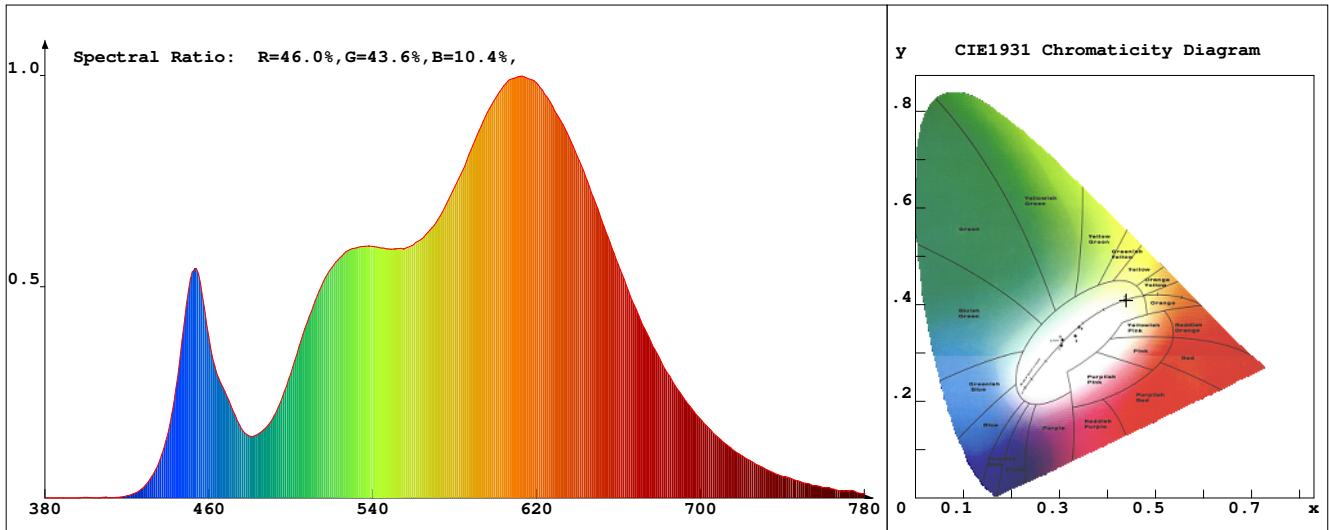


LED Test Report

Product Mark

Product Type : OR300-F52-528OR2-S1
 Temperature : 'C
 Operator : -
 Remark :

Manufacturer : -
 Humidity : -%
 Test Date : 2025-02-12



Chroma Parameters

Chro.Coor.:x=0.4391 y=0.4091 u=0.2498 v=0.3491 duv=0.0017
 CCT: 3005K Dominant Wave.:582.2nm Purity:54.6% Centre Wave:588.5nm
 Flux RGB Ratio:R=23.5%,G=75.1%,B=1.5% Peak Wave:612.6nm Half Width:149.3nm

Rendering Index:Ra= 91.0 CRI= 87.8

R1 =92	R2 =94	R3 =97	R4 =94	R5 =92	R6 =94	R7 =90	R8 =75
R9 =40	R10=86	R11=96	R12=75	R13=93	R14=97	R15=84	
PPF:18.474umol/s (400-700nm)			PRF:3.8mW (400-700nm)			PAR:3.4mW (400-700nm)	

Photo Parameters

Flux:1305.05lm Effi.:102.0lm/W Radiant:3940.1mW Iv:0.0mcd
 Scotopic Flux:1805.7Plm Effi.:0.0Plm/W S/P:1.4
 Efficiency:0.00 Effi Level:A++ (EU 874-2012) Photon Flux:19293.600umol/s (380-780nm)

Ele. Parameters

Forward Current:If=533.0mA Reverse Voltage:Vr=5.00V
 Forward Voltage:Vf=24.00V Reverse Current:Ir=0.00uA
 Power:P=12.801W

Instrument state

Instrument:Lisun LMS-8000 Integral Time: 142.823ms VPeak: 15064
 VDark: 1347 Scan Range: 380-780nm Product ID: 201508924

IES TM-30-2015 Test Report

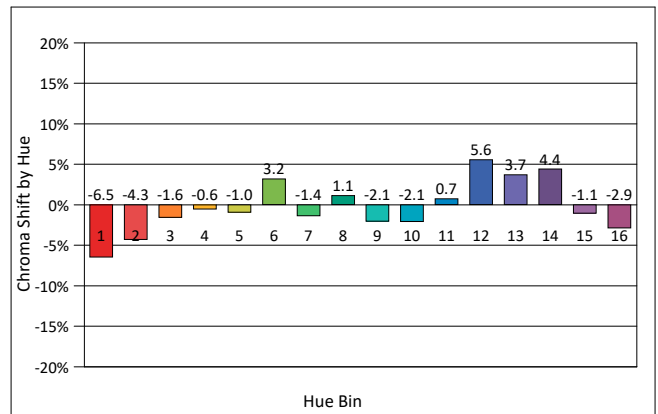
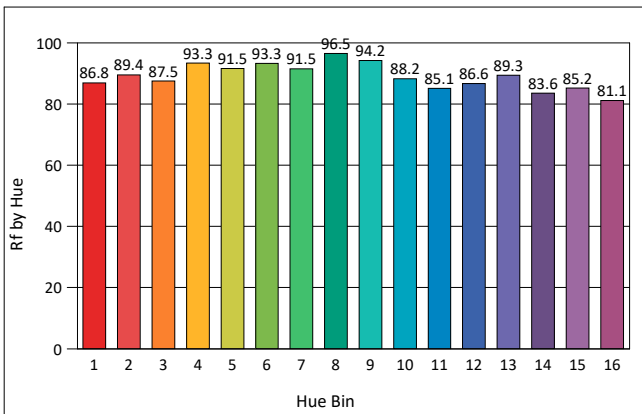
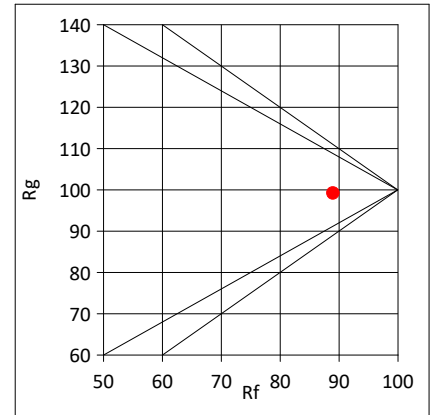
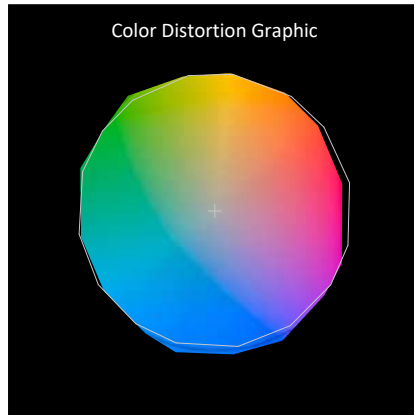
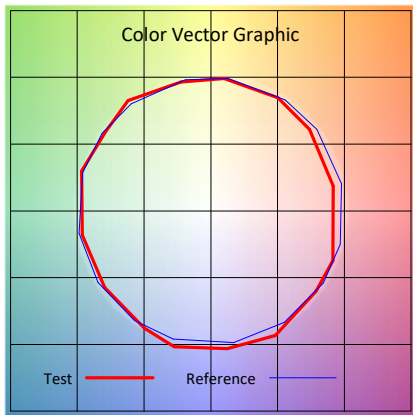
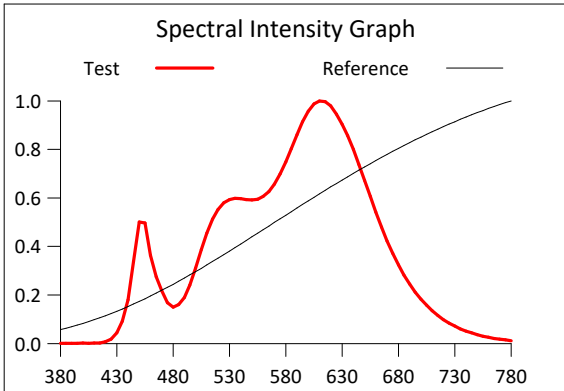
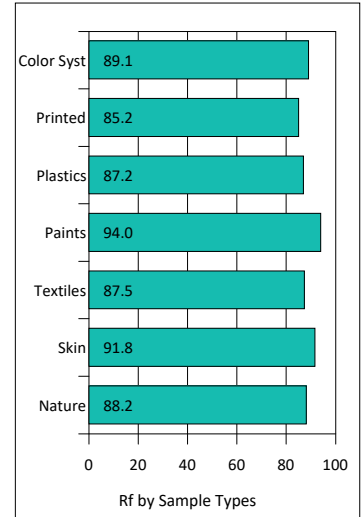
Product Mark

Product Type : OR300-F52-528OR2-S1
 Temperature : 'C
 Operator : -
 Remark :

Manufacturer : -
 Humidity : -%
 Test Date : 2025-02-12

Rf: 89.0 CCT(K): 3005 u': 0.2498
 Rg: 99.2 LER: 318.2 Duv: 0.0017 v': 0.3491

Hue Bin	Rf	Graphic Shifts (%)	
		Chroma	Hue
1	86.8	-6.5%	-0.4%
2	89.4	-4.3%	3.1%
3	87.5	-1.6%	5.5%
4	93.3	-0.6%	3.0%
5	91.5	-1.0%	3.5%
6	93.3	3.2%	0.8%
7	91.5	-1.4%	-2.6%
8	96.5	1.1%	-1.3%
9	94.2	-2.1%	1.6%
10	88.2	-2.1%	6.1%
11	85.1	0.7%	9.5%
12	86.6	5.6%	1.7%
13	89.3	3.7%	-5.6%
14	83.6	4.4%	-11.1%
15	85.2	-1.1%	-8.4%
16	81.1	-2.9%	-13.1%



IES TM-30-2015 Test Report

Product Mark

Product Type : OR300-F52-528OR2-S1

Manufacturer : -

Temperature : 'C

Humidity : -%

Operator : -

Test Date : 2025-02-12

Remark :

