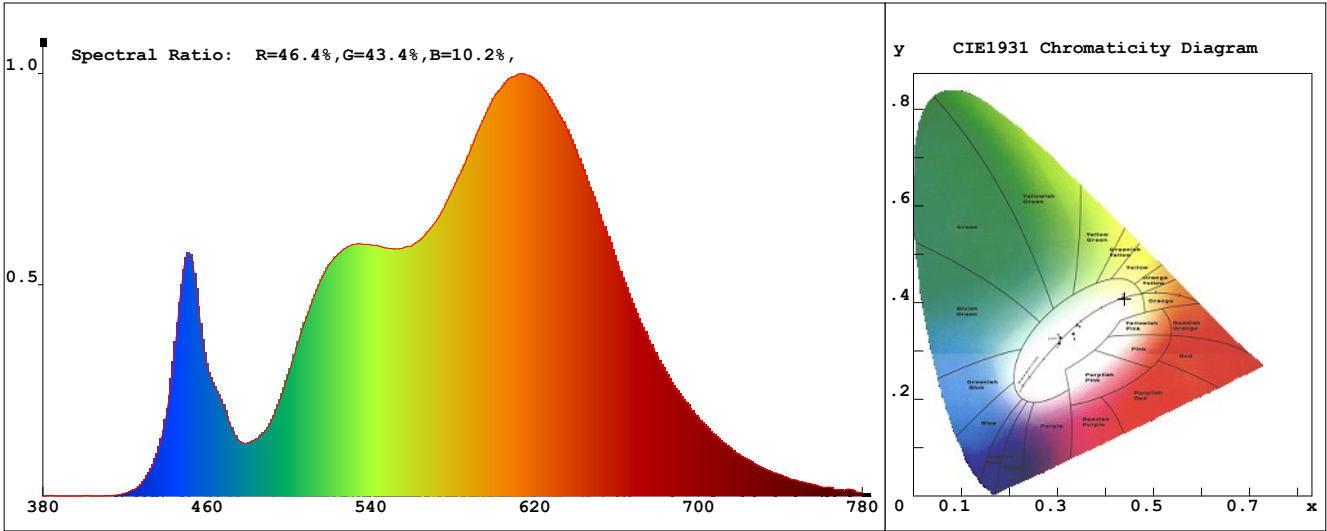


LED Test Report

Product Mark

Product Type : OR300-F52-4800R4
 Temperature : 'C
 Operator : -
 Remark:

Manufacturer : -
 Humidity : -%
 Test Date : 2025-02-12



Chroma Parameters

Chro.Coor.:x=0.4397 y=0.4079 u=0.2507 v=0.3489 duv=0.0011
 CCT: 2985K Dominant Wave.:582.5nm Purity:54.4% Centre Wave:588.6nm
 Flux RGB Ratio:R=23.7%,G=74.9%,B=1.4% Peak Wave:613.6nm Half Width:149.5nm

Rendering Index:Ra= 91.2 CRI= 87.9

R1 =92	R2 =94	R3 =95	R4 =95	R5 =93	R6 =95	R7 =90	R8 =76
R9 =43	R10=85	R11=95	R12=77	R13=93	R14=96	R15=85	
PPF:10.392umol/s (400-700nm)			PRF:2.1mW (400-700nm)			PAR:1.9mW (400-700nm)	

Photo Parameters

Flux:721.98lm Effi.:89.7lm/W Radiant:2213.1mW Iv:0.0mcd
 Scotopic Flux:989.9Plm Effi.:0.0Plm/W S/P:1.4
 Efficiency:0.00 Effi Level:A++ (EU 874-2012) Photon Flux:10838.600umol/s (380-780nm)

Ele. Parameters

Forward Current:If=169.0mA Reverse Voltage:Vr=5.00V
 Forward Voltage:Vf=47.64V Reverse Current:Ir=0.00uA
 Power:P=8.101W

Instrument state

Instrument:Lisun LMS-8000 Integral Time: 240.366ms VPeak: 14568
 VDark: 1348 Scan Range: 380-780nm Product ID: 201508924

IES TM-30-2015 Test Report

Product Mark

Product Type : OR300-F52-4800R4

Temperature : 'C

Operator : -

Remark:

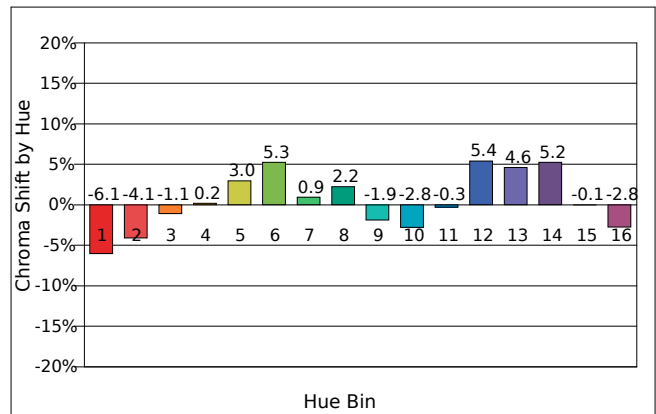
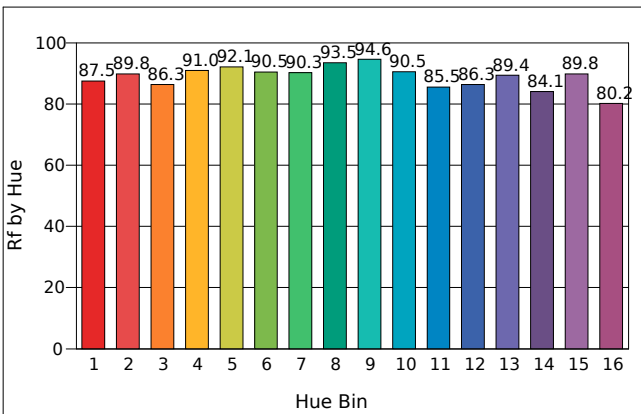
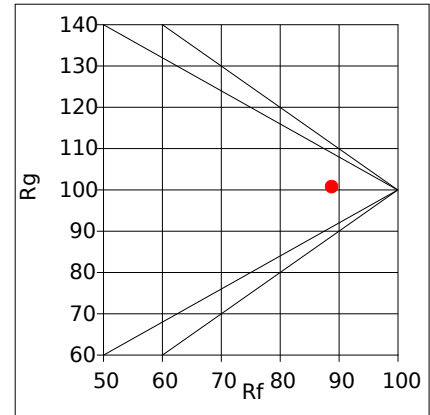
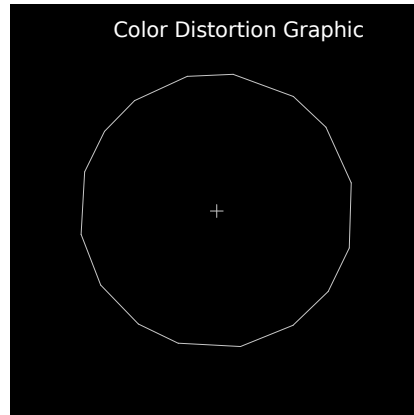
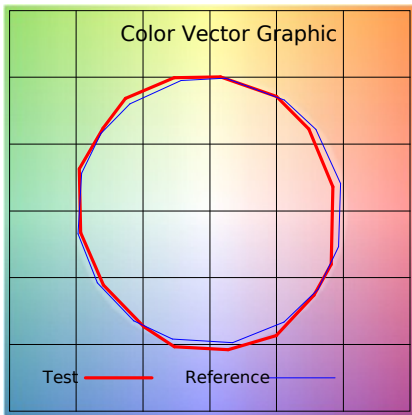
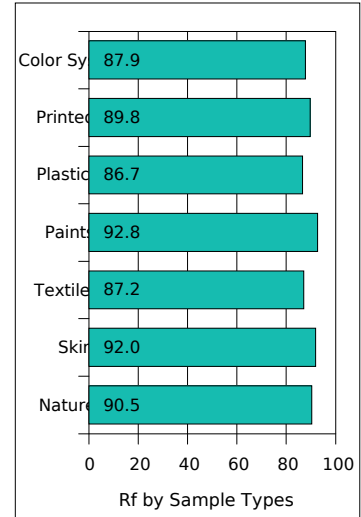
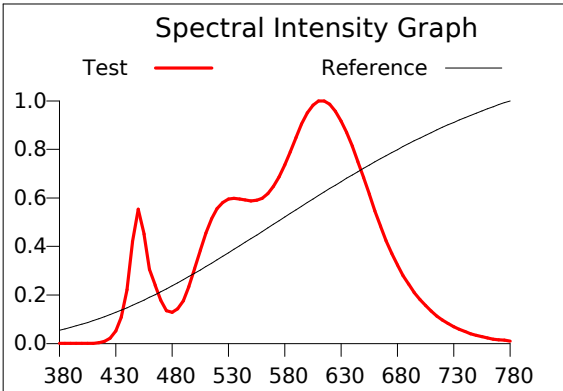
Manufacturer : -

Humidity : -%

Test Date : 2025-02-12

Rf: 88.8 CCT(K): 2985 u': 0.2507
 Rg: 100.7 LER: 317.4 Duv: 0.0011 v': 0.3489

Hue Bin	Rf	Graphic Shifts (%)	
		Chroma	Hue
1	87.5	-6.1%	-1.2%
2	89.8	-4.1%	3.2%
3	86.3	-1.1%	6.2%
4	91.0	0.2%	3.8%
5	92.1	3.0%	4.6%
6	90.5	5.3%	0.7%
7	90.3	0.9%	-4.5%
8	93.5	2.2%	-3.0%
9	94.6	-1.9%	-0.6%
10	90.5	-2.8%	4.0%
11	85.5	-0.3%	9.0%
12	86.3	5.4%	2.5%
13	89.4	4.6%	-4.6%
14	84.1	5.2%	-10.3%
15	89.8	-0.1%	-5.6%
16	80.2	-2.8%	-13.9%



IES TM-30-2015 Test Report

Product Mark

Product Type : OR300-F52-480OR4

Manufacturer : -

Temperature : 'C

Humidity : -%

Operator : -

Test Date : 2025-02-12

Remark :

