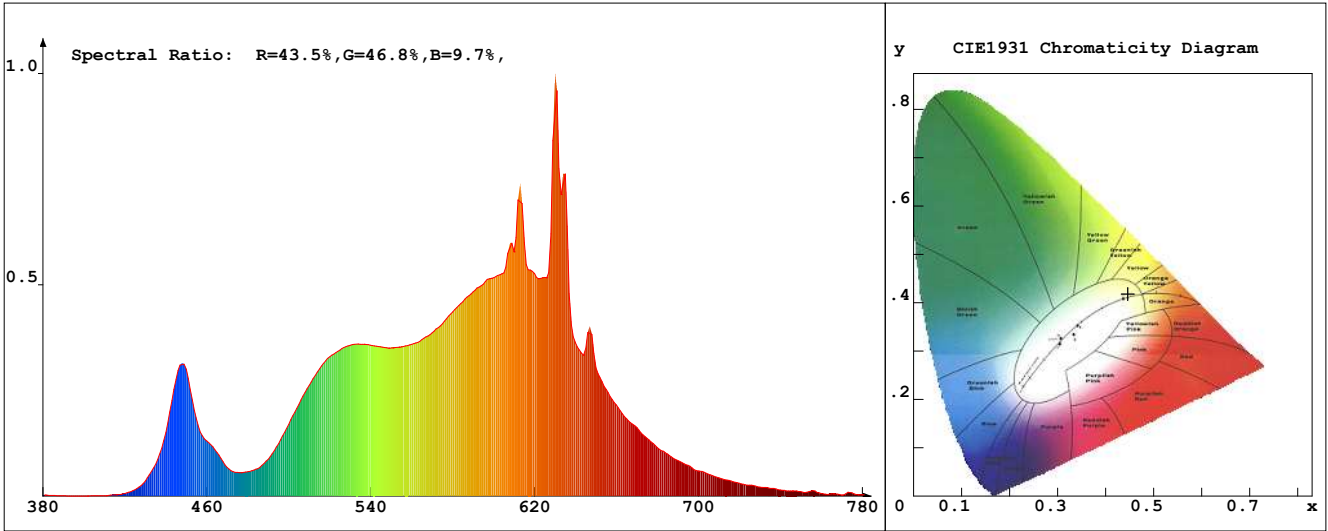


LED Test Report

Product Mark

Product Type : OR300-F52-480OR2-W10
 Temperature : 'C
 Operator : -
 Remark:

Manufacturer : -
 Humidity : -%
 Test Date : 2025-01-28



Chroma Parameters

Chro.Coor.:x=0.4463 y=0.4185 u=0.2504 v=0.3522 duv=0.0044
 CCT: 2962K Dominant Wave.:581.6nm Purity:59.6% Centre Wave:617.2nm
 Flux RGB Ratio:R=23.7%,G=75.2%,B=1.1% Peak Wave:629.4nm Half Width:37.2nm

Rendering Index:Ra= 87.9 CRI= 84.7

R1 =89	R2 =91	R3 =92	R4 =96	R5 =91	R6 =88	R7 =85	R8 =72
R9 =36	R10=79	R11=97	R12=72	R13=89	R14=94	R15=81	
PPF:25.504umol/s (400-700nm)			PRF:5.3mW (400-700nm)			PAR:4.7mW (400-700nm)	

Photo Parameters

Flux:1902.62lm Effi.:146.2lm/W Radiant:5388.3mW Iv:0.0mcd
 Scotopic Flux:2527.7Plm Effi.:0.0Plm/W S/P:1.3
 Efficiency:0.00 Effi Level:A++ (EU 874-2012) Photon Flux:26140.801umol/s (380-780nm)

Ele. Parameters

Forward Current:If=543.0mA Reverse Voltage:Vr=5.00V
 Forward Voltage:Vf=23.97V Reverse Current:Ir=0.00uA
 Power:P=13.040W

Instrument state

Instrument:Lisun LMS-8000 Integral Time: 36.452ms VPeak: 13544
 VDark: 1347 Scan Range: 380-780nm Product ID: 201508924

IES TM-30-2015 Test Report

Product Mark

Product Type : OR300-F52-480OR2-W10

Temperature : 'C

Operator : -

Remark :

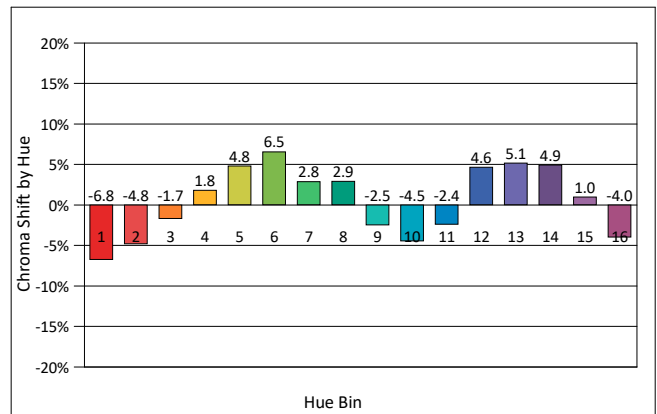
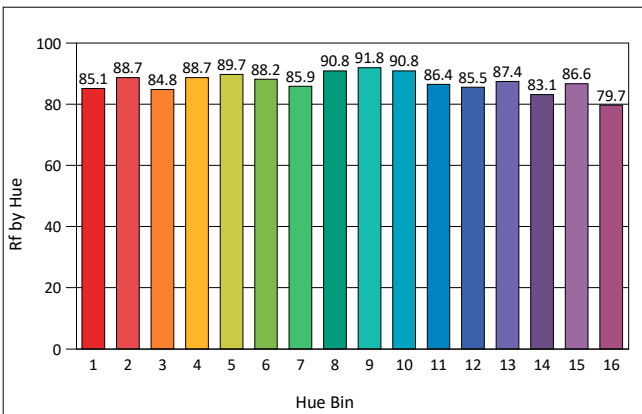
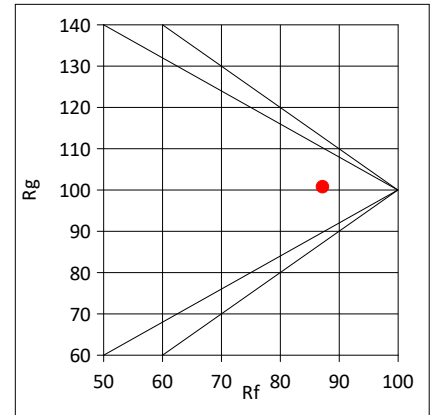
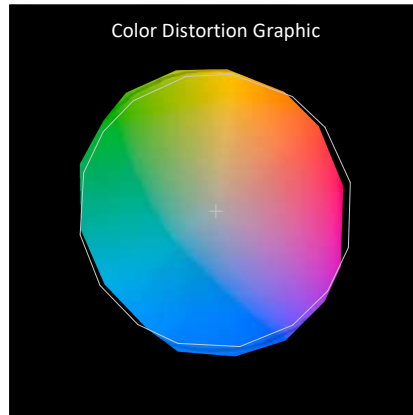
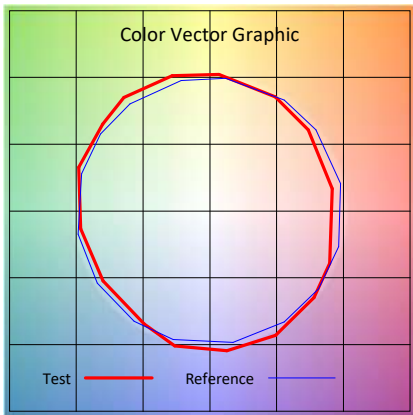
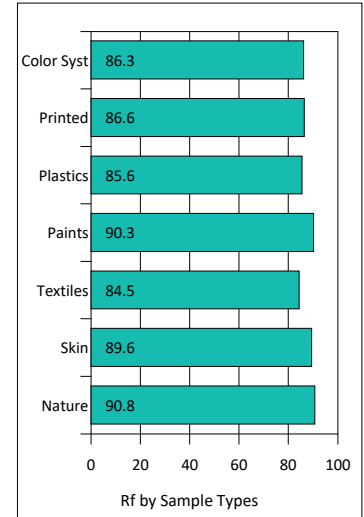
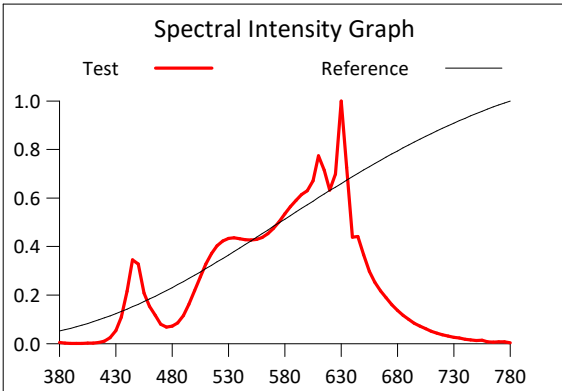
Manufacturer : -

Humidity : -%

Test Date : 2025-01-28

Rf: 87.2 CCT(K): 2962 u': 0.2504
 Rg: 100.7 LER: 341.9 Duv: 0.0044 v': 0.3522

Hue Bin	Rf	Graphic Shifts (%)	
		Chroma	Hue
1	85.1	-6.8%	-2.5%
2	88.7	-4.8%	3.1%
3	84.8	-1.7%	6.8%
4	88.7	1.8%	5.6%
5	89.7	4.8%	5.9%
6	88.2	6.5%	0.9%
7	85.9	2.8%	-7.1%
8	90.8	2.9%	-4.4%
9	91.8	-2.5%	-3.5%
10	90.8	-4.5%	1.1%
11	86.4	-2.4%	7.6%
12	85.5	4.6%	2.1%
13	87.4	5.1%	-5.7%
14	83.1	4.9%	-11.1%
15	86.6	1.0%	-7.3%
16	79.7	-4.0%	-13.7%



IES TM-30-2015 Test Report

Product Mark

Product Type : OR300-F52-480OR2-W10

Manufacturer : -

Temperature : 'C

Humidity : -%

Operator : -

Test Date : 2025-01-28

Remark :

