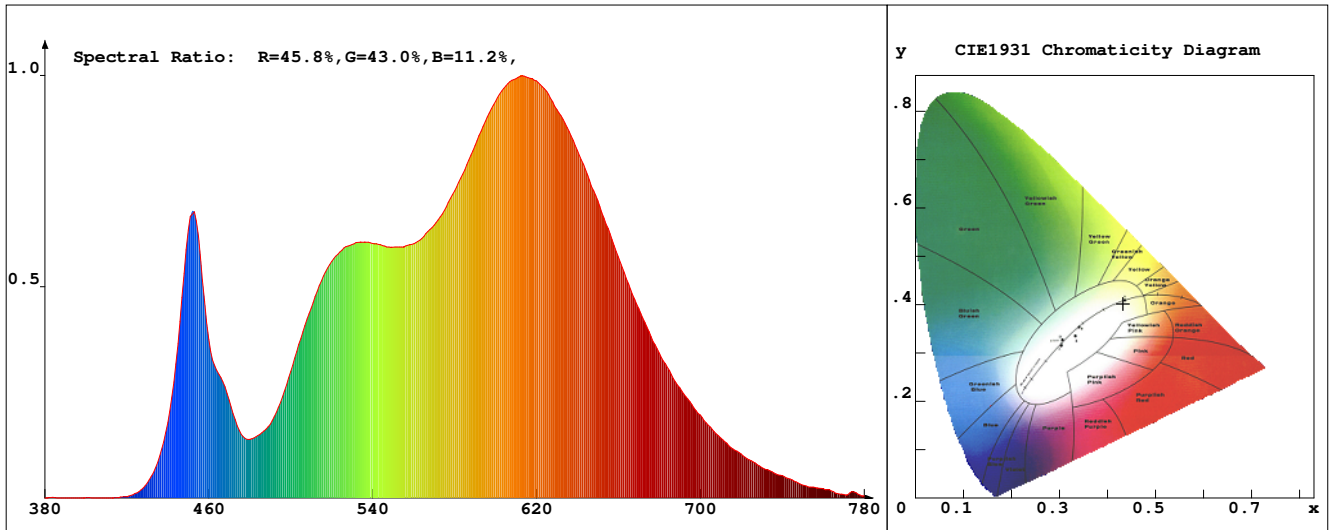


LED Test Report

Product Mark

Product Type : OR300-F52-4000RO-W3
 Temperature : 'C
 Operator : -
 Remark :

Manufacturer : -
 Humidity : -%
 Test Date : 2025-02-12



Chroma Parameters

Chro.Coor.:x=0.4326 y=0.4016 u=0.2489 v=0.3465 duv=-0.0004
 CCT: 3053K Dominant Wave.:582.7nm Purity:50.4% Centre Wave:588.6nm
 Flux RGB Ratio:R=23.5%,G=75.0%,B=1.5% Peak Wave:611.6nm Half Width:151.6nm

Rendering Index:Ra= 92.1 CRI= 89.0

R1 =94	R2 =95	R3 =96	R4 =95	R5 =94	R6 =95	R7 =91	R8 =78
R9 =47	R10=88	R11=95	R12=77	R13=95	R14=97	R15=87	
PPF:3.319umol/s (400-700nm)			PRF:0.7mW (400-700nm)			PAR:0.6mW (400-700nm)	

Photo Parameters

Flux:230.99lm Effi.:51.3lm/W Radiant:708.1mW Iv:0.0mcd
 Scotopic Flux:326.7Plm Effi.:0.0Plm/W S/P:1.4
 Efficiency:0.00 Effi Level:A++ (EU 874-2012) Photon Flux:3459.680umol/s (380-780nm)

Ele. Parameters

Forward Current:If=903.0mA Reverse Voltage:Vr=5.00V
 Forward Voltage:Vf=4.99V Reverse Current:Ir=0.00uA
 Power:P=4.501W

Instrument state

Instrument:Lisun LMS-8000 Integral Time: 789.950ms VPeak: 14984
 VDark: 1367 Scan Range: 380-780nm Product ID: 201508924

IES TM-30-2015 Test Report

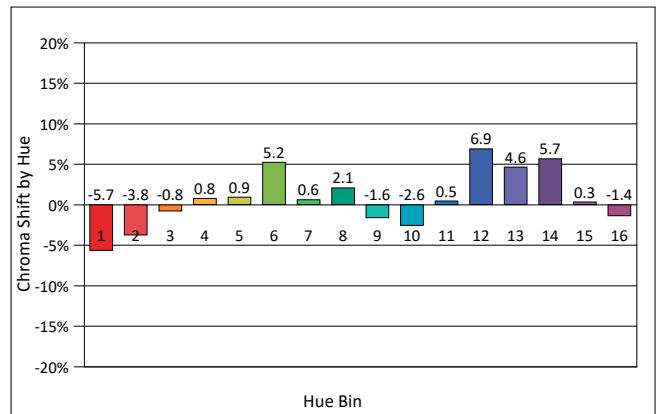
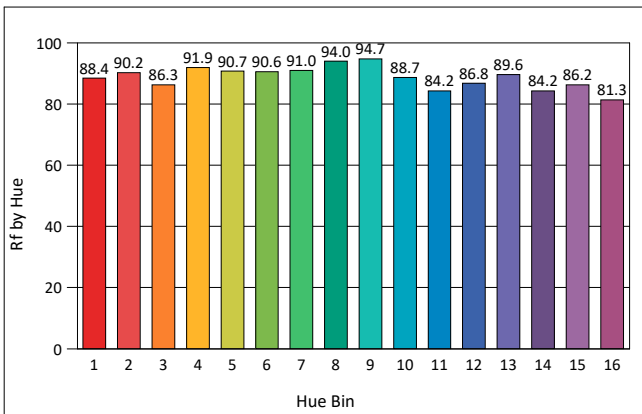
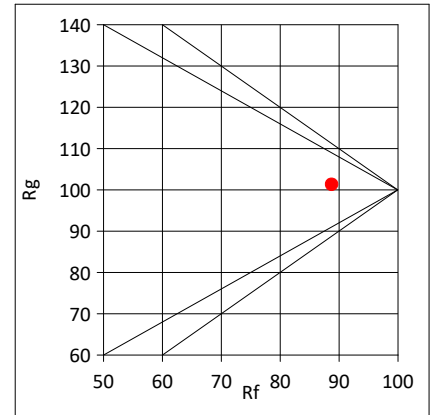
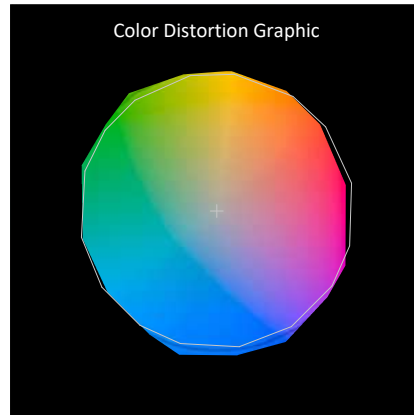
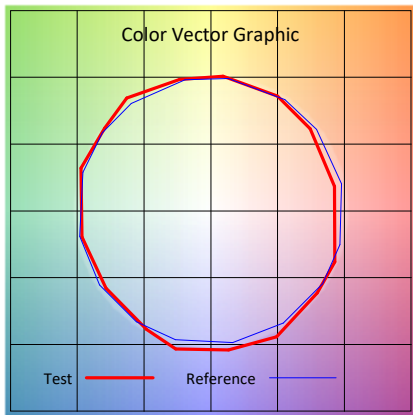
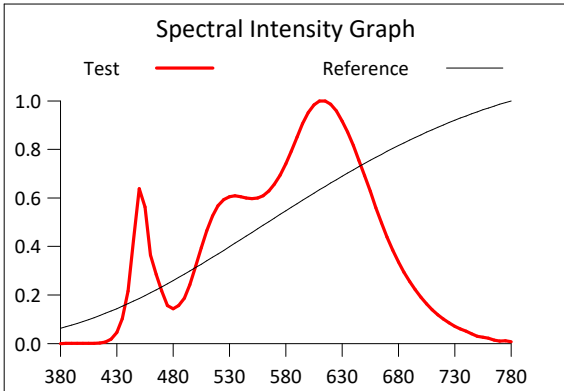
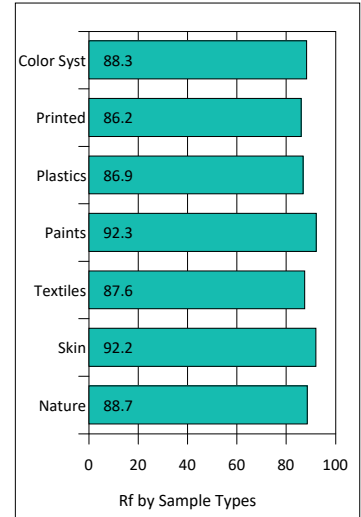
Product Mark

Product Type : OR300-F52-4000RO-W3
 Temperature : 'C
 Operator : -
 Remark :

Manufacturer : -
 Humidity : -%
 Test Date : 2025-02-12

Rf: 88.8 CCT(K): 3053 u': 0.2489
 Rg: 101.3 LER: 313.9 Duv: -0.0004 v': 0.3465

Hue Bin	Rf	Graphic Shifts (%)	
		Chroma	Hue
1	88.4	-5.7%	-0.9%
2	90.2	-3.8%	3.2%
3	86.3	-0.8%	6.2%
4	91.9	0.8%	4.1%
5	90.7	0.9%	4.0%
6	90.6	5.2%	0.6%
7	91.0	0.6%	-3.7%
8	94.0	2.1%	-2.7%
9	94.7	-1.6%	0.8%
10	88.7	-2.6%	4.9%
11	84.2	0.5%	9.3%
12	86.8	6.9%	1.5%
13	89.6	4.6%	-4.2%
14	84.2	5.7%	-9.9%
15	86.2	0.3%	-8.1%
16	81.3	-1.4%	-13.3%



IES TM-30-2015 Test Report

Product Mark

Product Type : OR300-F52-4000RO-W3

Manufacturer : -

Temperature : 'C

Humidity : -%

Operator : -

Test Date : 2025-02-12

Remark :

