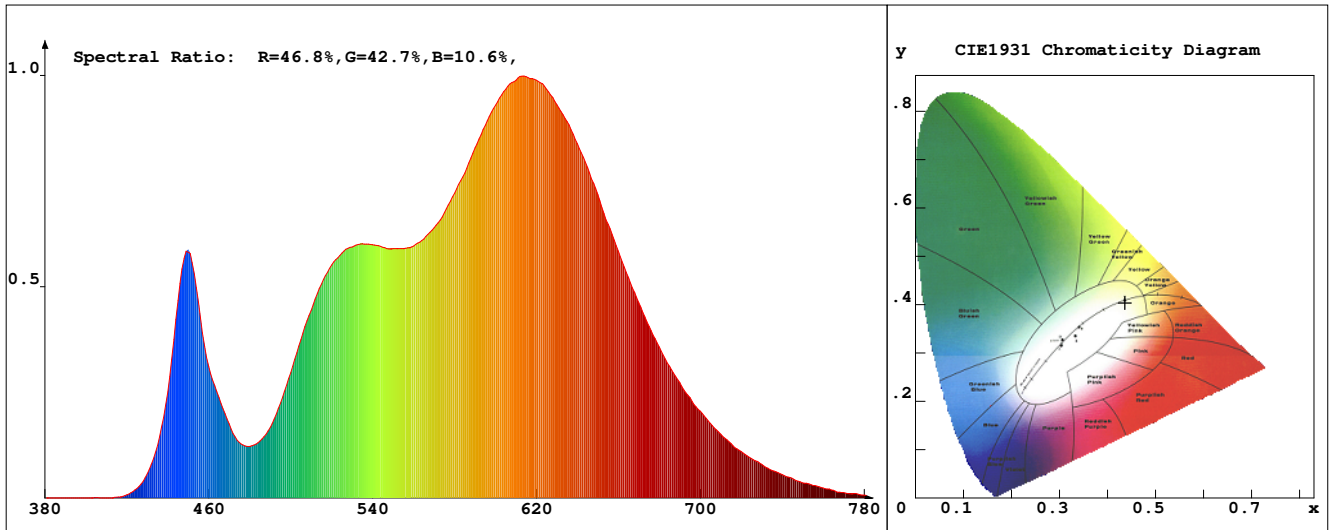


LED Test Report

Product Mark

Product Type : OR300-F52-384OR2-W8
 Temperature : 'C
 Operator : -
 Remark :

Manufacturer : -
 Humidity : -%
 Test Date : 2025-02-12



Chroma Parameters

Chro.Coord.:x=0.4365 y=0.4037 u=0.2505 v=0.3474 duv=-0.0001
 CCT: 3004K Dominant Wave.:582.8nm Purity:52.2% Centre Wave:589.3nm
 Flux RGB Ratio:R=23.7%,G=74.9%,B=1.4% Peak Wave:613.6nm Half Width:152.2nm

Rendering Index:Ra= 91.8 CRI= 88.7

| | | | | | | | |
|------------------------------|--------|--------|-----------------------|--------|--------|-----------------------|--------|
| R1 =94 | R2 =95 | R3 =95 | R4 =94 | R5 =93 | R6 =95 | R7 =91 | R8 =79 |
| R9 =48 | R10=86 | R11=94 | R12=79 | R13=94 | R14=96 | R15=87 | |
| PPF:15.449umol/s (400-700nm) | | | PRF:3.2mW (400-700nm) | | | PAR:2.8mW (400-700nm) | |

Photo Parameters

Flux:1061.21lm Effi.:118.9lm/W Radiant:3297.6mW Iv:0.0mcd
 Scotopic Flux:1466.8Plm Effi.:0.0Plm/W S/P:1.4
 Efficiency:0.00 Effi Level:A++ (EU 874-2012) Photon Flux:16156.000umol/s (380-780nm)

Ele. Parameters

Forward Current:If=372.0mA Reverse Voltage:Vr=5.00V
 Forward Voltage:Vf=24.00V Reverse Current:Ir=0.00uA
 Power:P=8.950W

Instrument state

Instrument:Lisun LMS-8000 Integral Time: 147.869ms VPeak: 13368
 VDark: 1335 Scan Range: 380-780nm Product ID: 201508924

IES TM-30-2015 Test Report

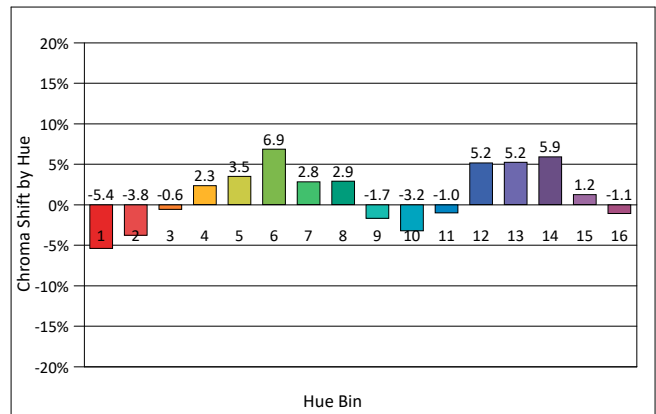
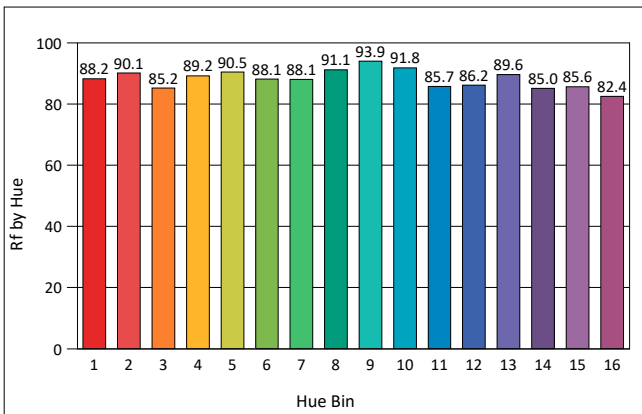
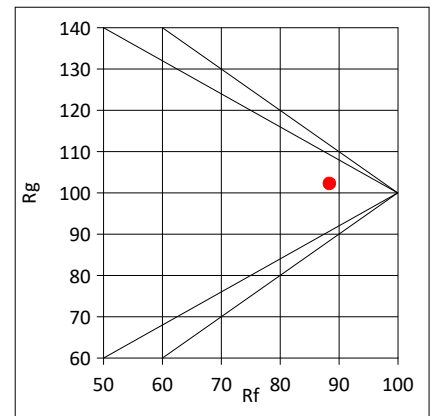
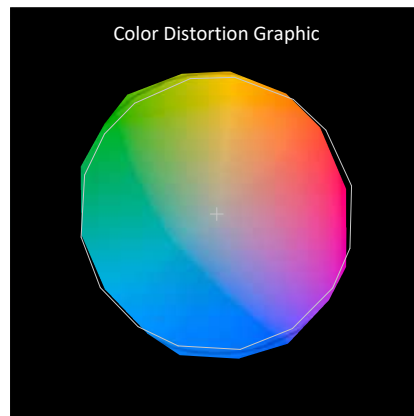
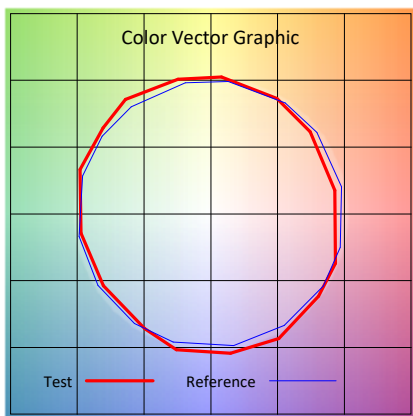
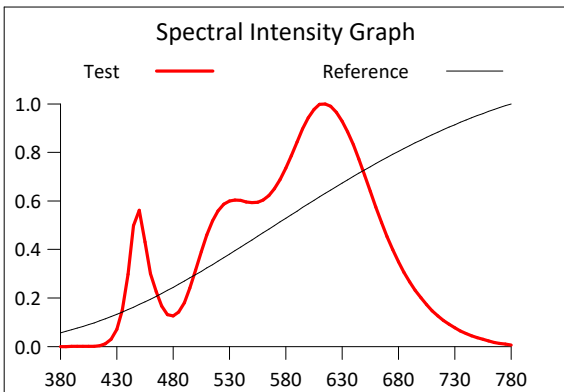
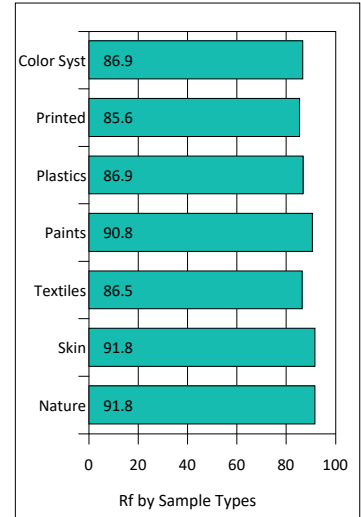
Product Mark

Product Type : OR300-F52-384OR2-W8
 Temperature : 'C
 Operator : -
 Remark :

Manufacturer : -
 Humidity : -%
 Test Date : 2025-02-12

Rf: 88.4 CCT(K): 3004 u': 0.2505
 Rg: 102.2 LER: 312.1 Duv: -0.0001 v': 0.3474

| Hue Bin | Rf | Graphic Shifts (%) | |
|---------|------|--------------------|--------|
| | | Chroma | Hue |
| 1 | 88.2 | -5.4% | -1.8% |
| 2 | 90.1 | -3.8% | 3.3% |
| 3 | 85.2 | -0.6% | 6.8% |
| 4 | 89.2 | 2.3% | 5.5% |
| 5 | 90.5 | 3.5% | 4.8% |
| 6 | 88.1 | 6.9% | 0.5% |
| 7 | 88.1 | 2.8% | -5.7% |
| 8 | 91.1 | 2.9% | -4.3% |
| 9 | 93.9 | -1.7% | -2.1% |
| 10 | 91.8 | -3.2% | 2.6% |
| 11 | 85.7 | -1.0% | 8.5% |
| 12 | 86.2 | 5.2% | 3.3% |
| 13 | 89.6 | 5.2% | -3.3% |
| 14 | 85.0 | 5.9% | -9.0% |
| 15 | 85.6 | 1.2% | -8.4% |
| 16 | 82.4 | -1.1% | -12.5% |



IES TM-30-2015 Test Report

Product Mark

Product Type : OR300-F52-384OR2-W8

Manufacturer : -

Temperature : 'C

Humidity : -%

Operator : -

Test Date : 2025-02-12

Remark :

