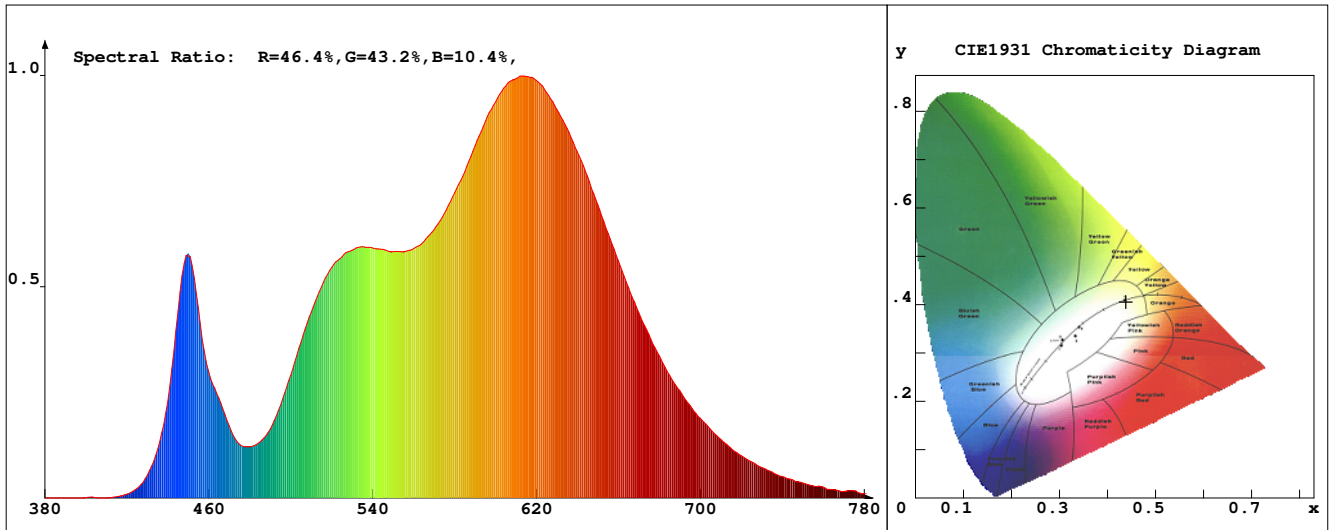


LED Test Report

Product Mark

Product Type : OR300-F52-384OR2-W5
 Temperature : 'C
 Operator : -
 Remark :

Manufacturer : -
 Humidity : -%
 Test Date : 2025-02-12



Chroma Parameters

Chro.Coor.:x=0.4385 y=0.4054 u=0.2510 v=0.3481 duv=0.0003
 CCT: 2985K Dominant Wave.:582.8nm Purity:53.3% Centre Wave:588.8nm
 Flux RGB Ratio:R=23.8%,G=74.9%,B=1.3% Peak Wave:614.6nm Half Width:149.5nm

Rendering Index:Ra= 91.3 CRI= 88.2

R1 =93	R2 =94	R3 =95	R4 =94	R5 =93	R6 =95	R7 =91	R8 =77
R9 =44	R10=86	R11=94	R12=78	R13=94	R14=96	R15=86	
PPF:13.187umol/s (400-700nm)			PRF:2.7mW (400-700nm)			PAR:2.4mW (400-700nm)	

Photo Parameters

Flux:917.01lm Effi.:101.8lm/W Radiant:2811.4mW Iv:0.0mcd
 Scotopic Flux:1255.3Plm Effi.:0.0Plm/W S/P:1.4
 Efficiency:0.00 Effi Level:A++ (EU 874-2012) Photon Flux:13766.000umol/s (380-780nm)

Ele. Parameters

Forward Current:If=378.0mA Reverse Voltage:Vr=5.00V
 Forward Voltage:Vf=23.83V Reverse Current:Ir=0.00uA
 Power:P=9.031W

Instrument state

Instrument:Lisun LMS-8000 Integral Time: 195.930ms VPeak: 14984
 VDark: 1344 Scan Range: 380-780nm Product ID: 201508924

IES TM-30-2015 Test Report

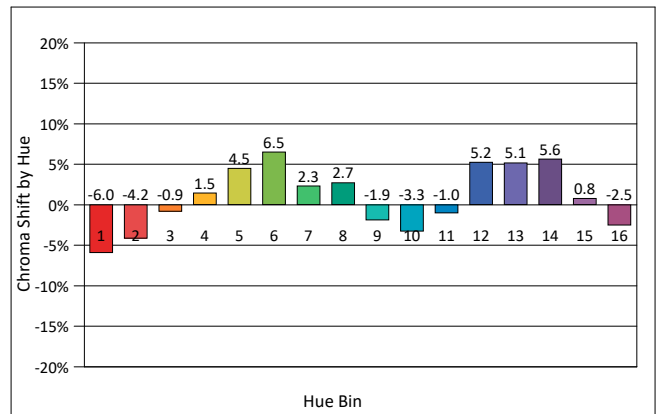
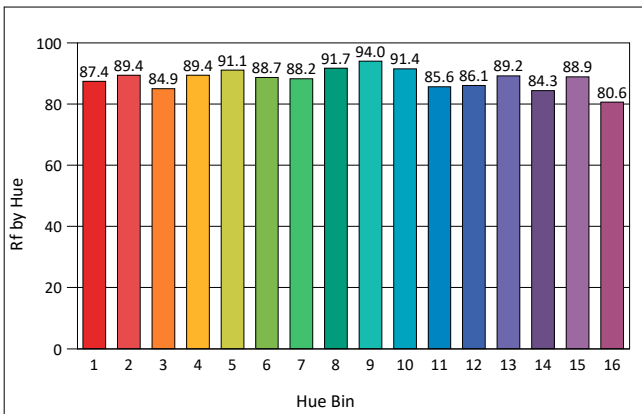
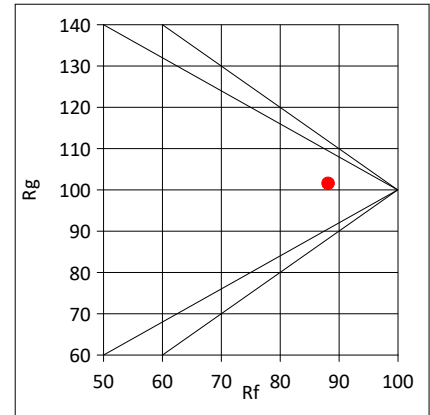
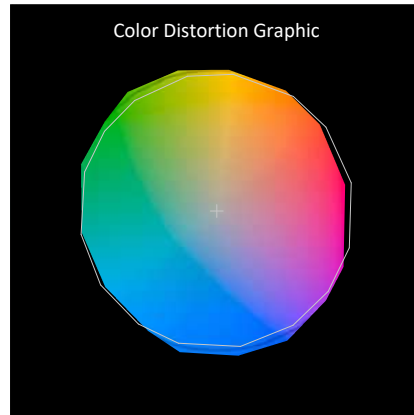
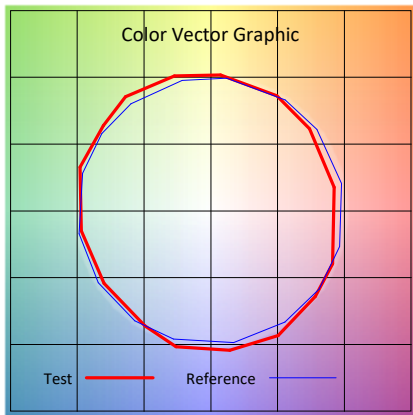
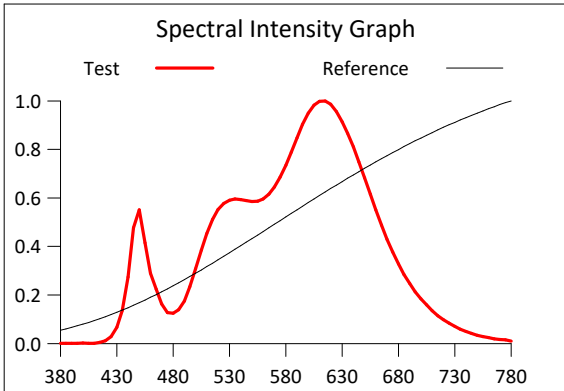
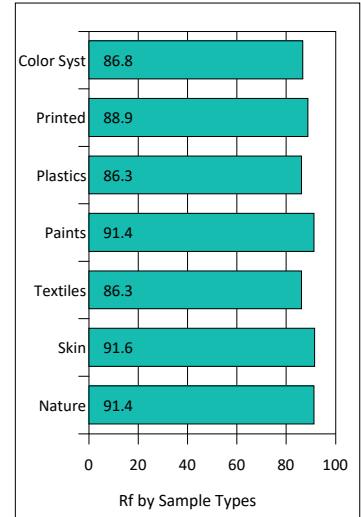
Product Mark

Product Type : OR300-F52-384OR2-W5
 Temperature : 'C
 Operator : -
 Remark :

Manufacturer : -
 Humidity : -%
 Test Date : 2025-02-12

Rf: 88.2 CCT(K): 2985 u': 0.2510
 Rg: 101.5 LER: 315.7 Duv: 0.0003 v': 0.3481

Hue Bin	Rf	Graphic Shifts (%)	
		Chroma	Hue
1	87.4	-6.0%	-1.7%
2	89.4	-4.2%	3.5%
3	84.9	-0.9%	7.0%
4	89.4	1.5%	4.9%
5	91.1	4.5%	5.1%
6	88.7	6.5%	0.5%
7	88.2	2.3%	-5.8%
8	91.7	2.7%	-4.0%
9	94.0	-1.9%	-1.9%
10	91.4	-3.3%	2.9%
11	85.6	-1.0%	8.6%
12	86.1	5.2%	3.0%
13	89.2	5.1%	-3.9%
14	84.3	5.6%	-9.8%
15	88.9	0.8%	-6.1%
16	80.6	-2.5%	-13.6%



IES TM-30-2015 Test Report

Product Mark

Product Type : OR300-F52-384OR2-W5

Manufacturer : -

Temperature : 'C

Humidity : -%

Operator : -

Test Date : 2025-02-12

Remark :

