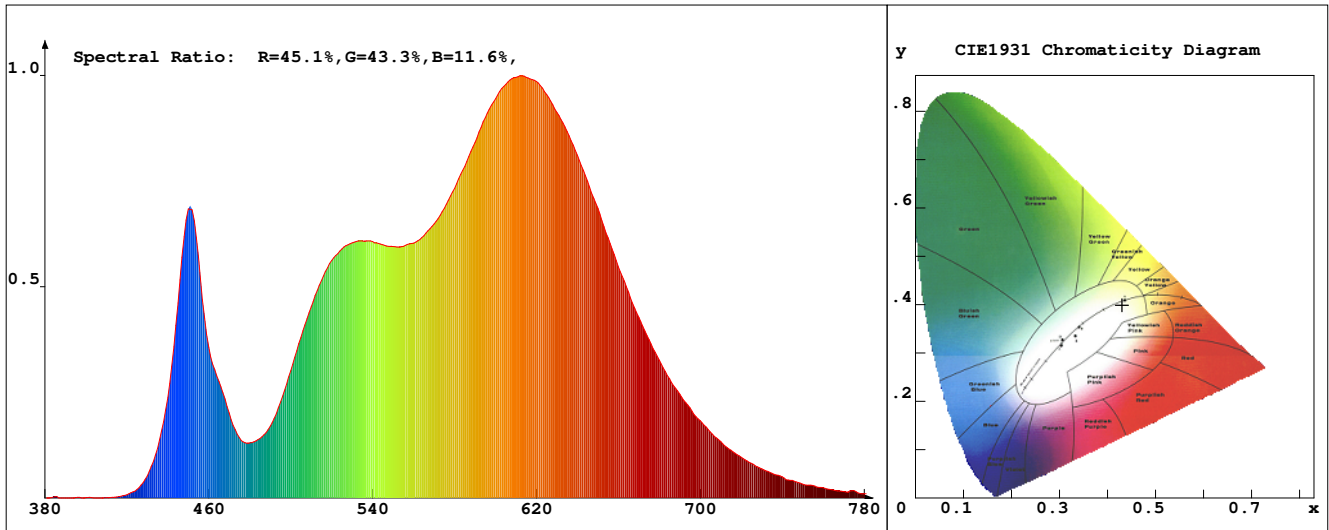


# LED Test Report

## Product Mark

Product Type : OR300-F52-384OR2-W10  
 Temperature : 'C  
 Operator : -  
 Remark :

Manufacturer : -  
 Humidity : -%  
 Test Date : 2025-02-12



## Chroma Parameters

Chro.Coord.:x=0.4306 y=0.3992 u=0.2486 v=0.3457 duv=-0.0011  
 CCT: 3069K Dominant Wave.:582.9nm Purity:49.1% Centre Wave:587.7nm  
 Flux RGB Ratio:R=23.3%,G=75.2%,B=1.5% Peak Wave:612.6nm Half Width:149.7nm

## Rendering Index:Ra= 91.1 CRI= 88.0

R1 =93	R2 =94	R3 =95	R4 =94	R5 =93	R6 =94	R7 =90	R8 =76
R9 =44	R10=86	R11=94	R12=77	R13=94	R14=96	R15=86	
PPF:10.851umol/s (400-700nm)			PRF:2.2mW (400-700nm)			PAR:2.0mW (400-700nm)	

## Photo Parameters

Flux:759.29lm      Effi.:84.6lm/W      Radiant:2319.0mW      Iv:0.0mcd  
 Scotopic Flux:1073.5Plm      Effi.:0.0Plm/W      S/P:1.4  
 Efficiency:0.00      Effi Level:A++ (EU 874-2012)      Photon Flux:11302.400umol/s (380-780nm)

## Ele. Parameters

Forward Current:If=383.0mA      Reverse Voltage:Vr=5.00V  
 Forward Voltage:Vf=23.43V      Reverse Current:Ir=0.00uA  
 Power:P=9.001W

## Instrument state

Instrument:Lisun LMS-8000      Integral Time: 229.936ms      VPeak: 14504  
 VDark: 1386      Scan Range: 380-780nm      Product ID: 201508924

# IES TM-30-2015 Test Report

**Product Mark**

Product Type : OR300-F52-384OR2-W10

Temperature : 'C

Operator : -

Remark :

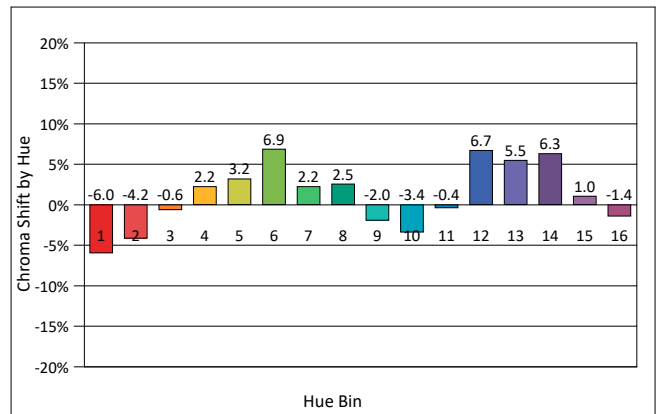
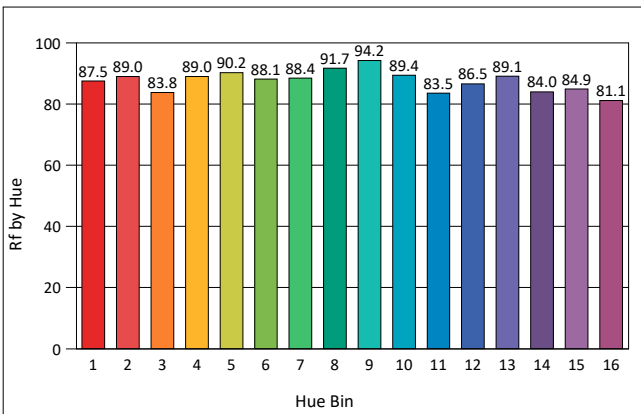
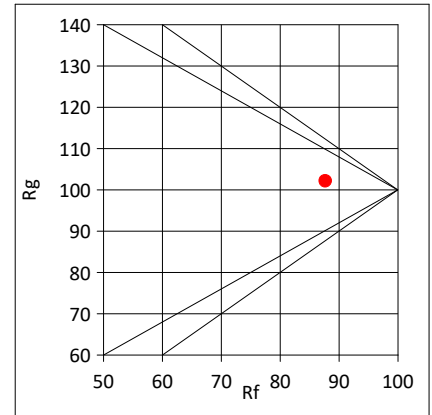
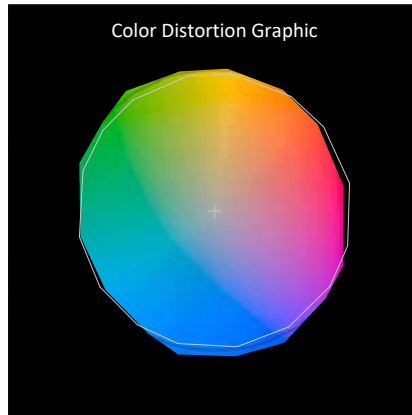
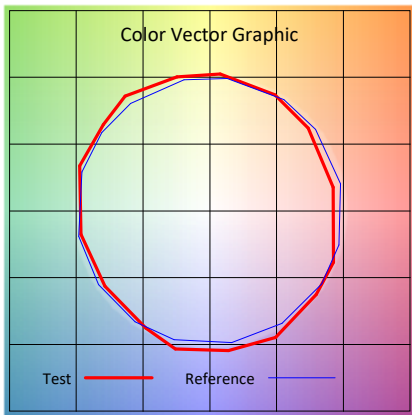
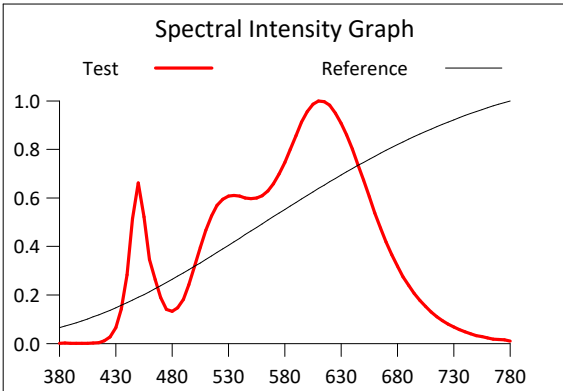
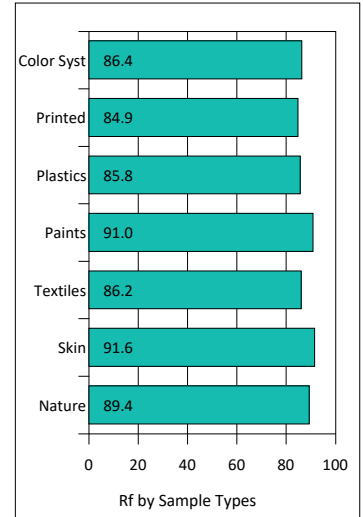
Manufacturer : -

Humidity : -%

Test Date : 2025-02-12

Rf: 87.7      CCT(K): 3069      u': 0.2486  
 Rg: 102.1    LER: 315.5    Duv: -0.0011    v': 0.3457

Hue Bin	Rf	Graphic Shifts (%)	
		Chroma	Hue
1	87.5	-6.0%	-1.5%
2	89.0	-4.2%	3.8%
3	83.8	-0.6%	7.5%
4	89.0	2.2%	5.7%
5	90.2	3.2%	4.8%
6	88.1	6.9%	0.3%
7	88.4	2.2%	-5.5%
8	91.7	2.5%	-4.1%
9	94.2	-2.0%	-0.9%
10	89.4	-3.4%	3.7%
11	83.5	-0.4%	9.5%
12	86.5	6.7%	2.3%
13	89.1	5.5%	-3.5%
14	84.0	6.3%	-9.7%
15	84.9	1.0%	-8.9%
16	81.1	-1.4%	-13.5%



# IES TM-30-2015 Test Report

**Product Mark**

Product Type : OR300-F52-384OR2-W10

Manufacturer : -

Temperature : 'C

Humidity : -%

Operator : -

Test Date : 2025-02-12

Remark :

