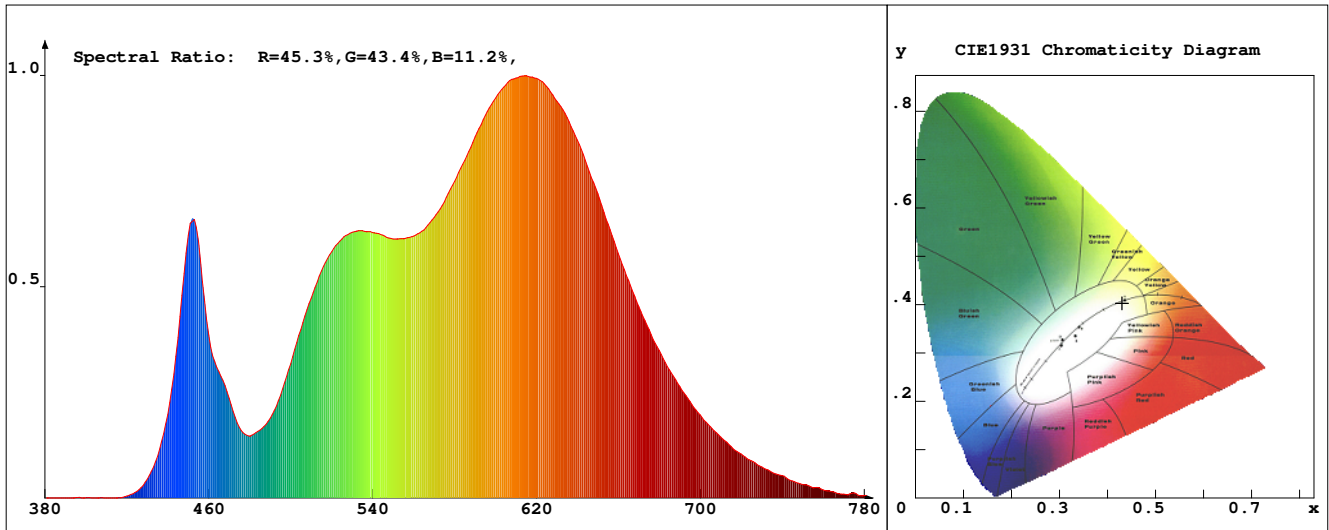


LED Test Report

Product Mark

Product Type : OR300-F52-384OR2-S1
 Temperature : 'C
 Operator : -
 Remark :

Manufacturer : -
 Humidity : -%
 Test Date : 2025-02-12



Chroma Parameters

Chro.Coor.:x=0.4305 y=0.4033 u=0.2467 v=0.3467 duv=0.0006
 CCT: 3105K Dominant Wave.:582.2nm Purity:50.3% Centre Wave:587.8nm
 Flux RGB Ratio:R=23.1%,G=75.4%,B=1.6% Peak Wave:613.6nm Half Width:153.6nm

Rendering Index:Ra= 92.3 CRI= 89.1

R1 =94	R2 =95	R3 =96	R4 =95	R5 =93	R6 =95	R7 =92	R8 =79
R9 =49	R10=87	R11=95	R12=76	R13=95	R14=97	R15=88	
PPF:9.051umol/s (400-700nm)			PRF:1.9mW (400-700nm)			PAR:1.7mW (400-700nm)	

Photo Parameters

Flux:625.15lm Effi.:69.6lm/W Radiant:1931.6mW Iv:0.0mcd
 Scotopic Flux:894.4Plm Effi.:0.0Plm/W S/P:1.4
 Efficiency:0.00 Effi Level:A++ (EU 874-2012) Photon Flux:9427.440umol/s (380-780nm)

Ele. Parameters

Forward Current:If=382.0mA Reverse Voltage:Vr=5.00V
 Forward Voltage:Vf=23.52V Reverse Current:Ir=0.00uA
 Power:P=9.001W

Instrument state

Instrument:Lisun LMS-8000 Integral Time: 264.436ms VPeak: 13848
 VDark: 1378 Scan Range: 380-780nm Product ID: 201508924

IES TM-30-2015 Test Report

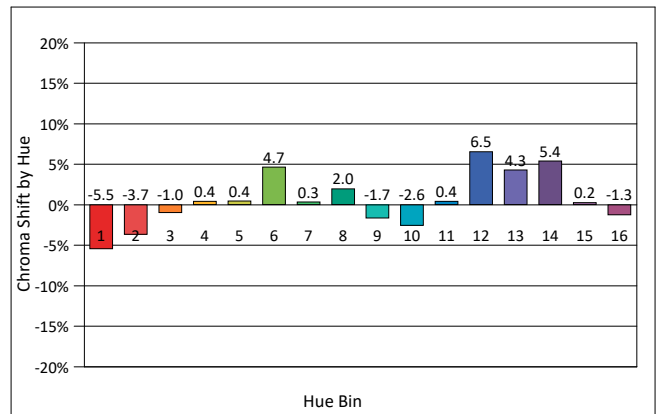
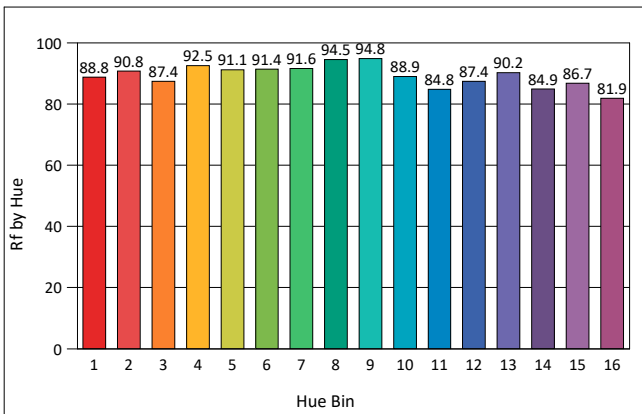
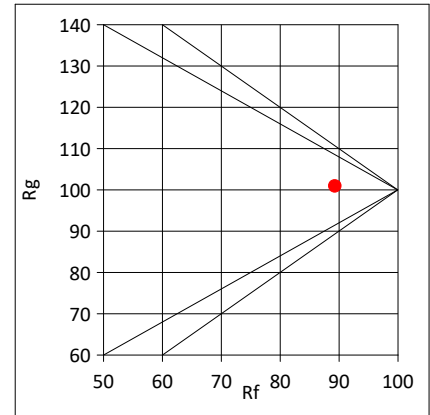
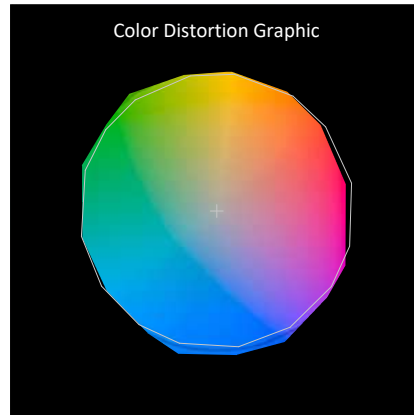
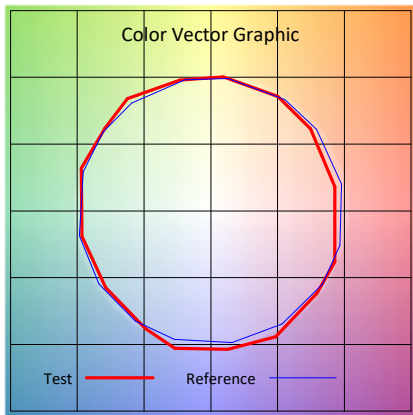
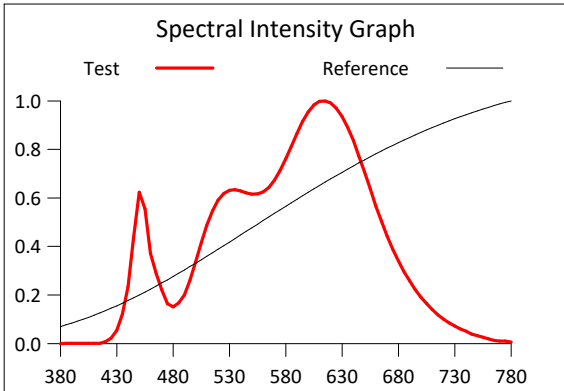
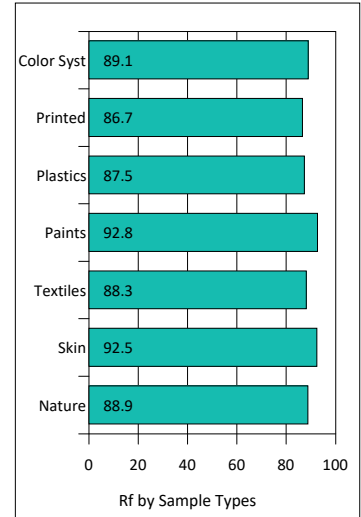
Product Mark

Product Type : OR300-F52-384OR2-S1
 Temperature : 'C
 Operator : -
 Remark :

Manufacturer : -
 Humidity : -%
 Test Date : 2025-02-12

Rf: 89.3 CCT(K): 3105 u': 0.2467
 Rg: 100.9 LER: 315.1 Duv: 0.0006 v': 0.3467

Hue Bin	Rf	Graphic Shifts (%)	
		Chroma	Hue
1	88.8	-5.5%	-0.9%
2	90.8	-3.7%	2.8%
3	87.4	-1.0%	5.7%
4	92.5	0.4%	3.7%
5	91.1	0.4%	3.9%
6	91.4	4.7%	0.8%
7	91.6	0.3%	-3.2%
8	94.5	2.0%	-2.3%
9	94.8	-1.7%	0.8%
10	88.9	-2.6%	4.8%
11	84.8	0.4%	9.0%
12	87.4	6.5%	1.5%
13	90.2	4.3%	-4.0%
14	84.9	5.4%	-9.4%
15	86.7	0.2%	-7.8%
16	81.9	-1.3%	-13.0%



IES TM-30-2015 Test Report

Product Mark

Product Type : OR300-F52-384OR2-S1

Manufacturer : -

Temperature : 'C

Humidity : -%

Operator : -

Test Date : 2025-02-12

Remark :

