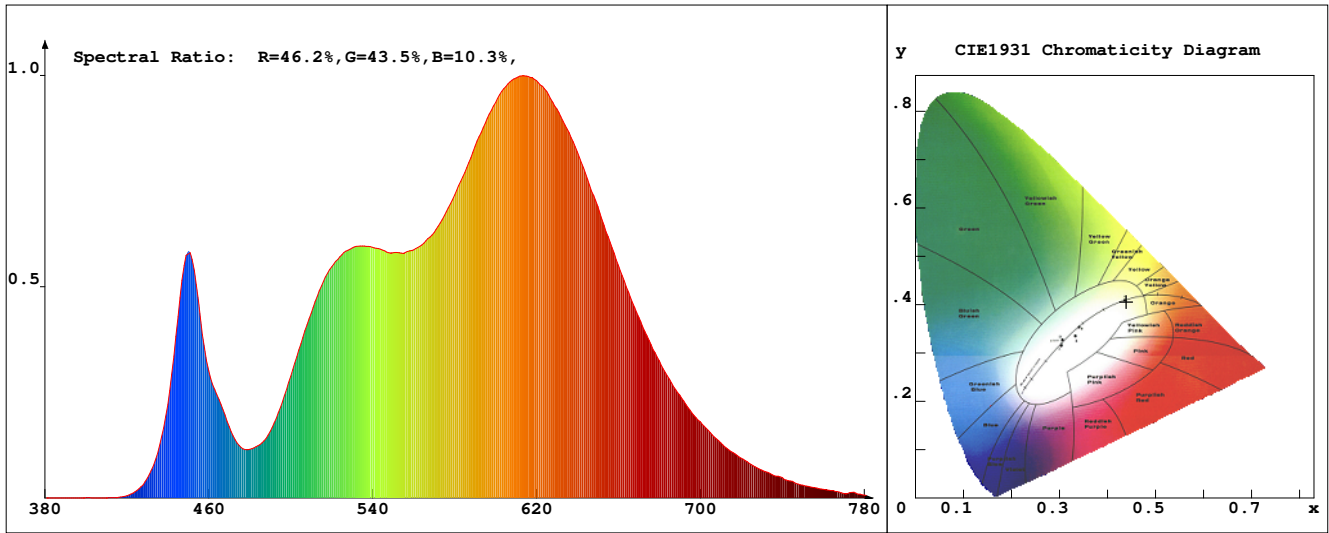


LED Test Report

Product Mark

Product Type : OR300-F52-3200R2
 Temperature : 'C
 Operator : -
 Remark :

Manufacturer : -
 Humidity : -%
 Test Date : 2025-02-12



Chroma Parameters

Chro.Coor.:x=0.4387 y=0.4059 u=0.2509 v=0.3482 duv=0.0005
 CCT: 2986K Dominant Wave.:582.7nm Purity:53.5% Centre Wave:588.2nm
 Flux RGB Ratio:R=23.8%,G=74.9%,B=1.3% Peak Wave:614.6nm Half Width:148.7nm

Rendering Index:Ra= 91.4 CRI= 88.2

R1 =93	R2 =94	R3 =95	R4 =94	R5 =93	R6 =95	R7 =91	R8 =77
R9 =44	R10=86	R11=94	R12=78	R13=94	R14=96	R15=86	
PPF:12.297umol/s (400-700nm)			PRF:2.5mW (400-700nm)			PAR:2.3mW (400-700nm)	

Photo Parameters

Flux:855.92lm Effi.:119.0lm/W Radiant:2615.4mW Iv:0.0mcd
 Scotopic Flux:1170.5Plm Effi.:0.0Plm/W S/P:1.4
 Efficiency:0.00 Effi Level:A++ (EU 874-2012) Photon Flux:12795.100umol/s (380-780nm)

Ele. Parameters

Forward Current:If=303.0mA Reverse Voltage:Vr=5.00V
 Forward Voltage:Vf=23.73V Reverse Current:Ir=0.00uA
 Power:P=7.200W

Instrument state

Instrument:Lisun LMS-8000 Integral Time: 195.930ms VPeak: 14232
 VDark: 1358 Scan Range: 380-780nm Product ID: 201508924

IES TM-30-2015 Test Report

Product Mark

Product Type : OR300-F52-3200R2

Temperature : 'C

Operator : -

Remark :

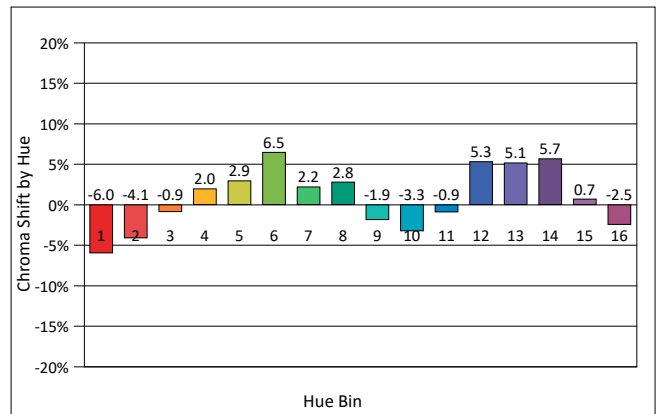
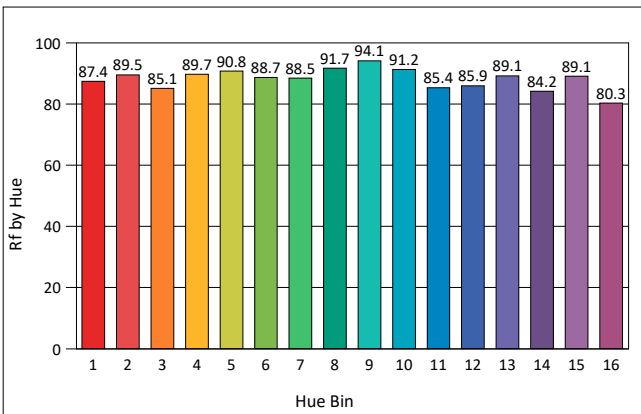
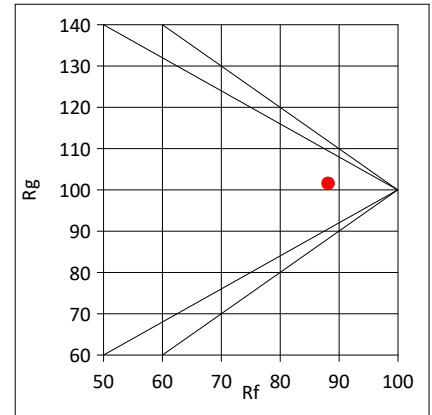
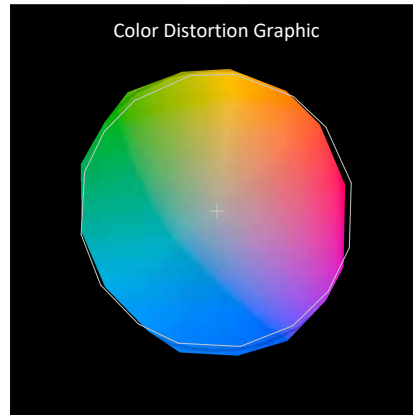
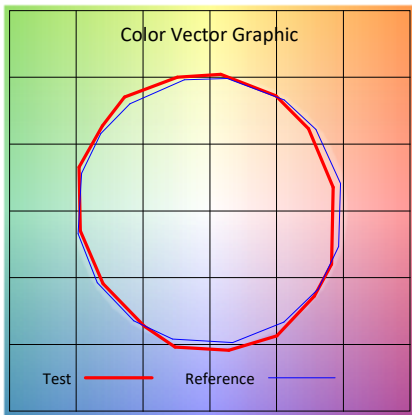
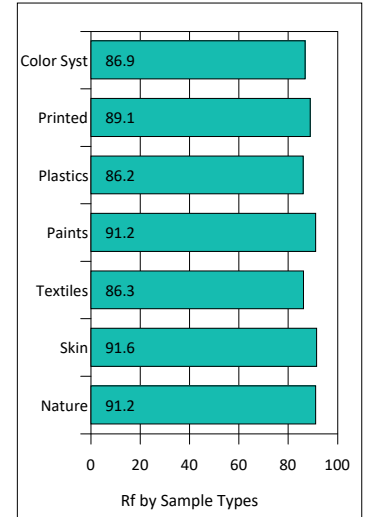
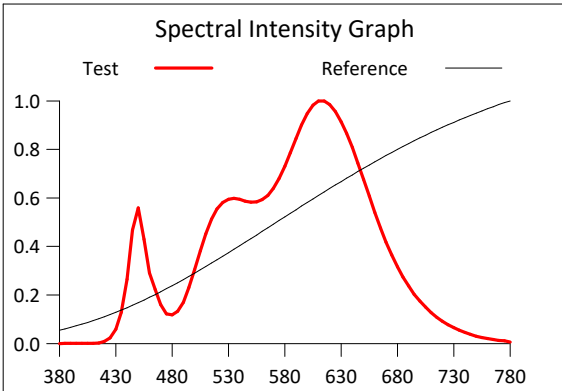
Manufacturer : -

Humidity : -%

Test Date : 2025-02-12

Rf: 88.2 CCT(K): 2986 u': 0.2509
 Rg: 101.5 LER: 318.0 Duv: 0.0005 v': 0.3482

Hue Bin	Rf	Graphic Shifts (%)	
		Chroma	Hue
1	87.4	-6.0%	-1.6%
2	89.5	-4.1%	3.4%
3	85.1	-0.9%	6.9%
4	89.7	2.0%	5.3%
5	90.8	2.9%	4.8%
6	88.7	6.5%	0.6%
7	88.5	2.2%	-5.6%
8	91.7	2.8%	-4.0%
9	94.1	-1.9%	-1.7%
10	91.2	-3.3%	3.0%
11	85.4	-0.9%	8.8%
12	85.9	5.3%	3.0%
13	89.1	5.1%	-4.0%
14	84.2	5.7%	-9.9%
15	89.1	0.7%	-6.1%
16	80.3	-2.5%	-13.8%



IES TM-30-2015 Test Report

Product Mark

Product Type : OR300-F52-3200R2

Manufacturer : -

Temperature : 'C

Humidity : -%

Operator : -

Test Date : 2025-02-12

Remark :

