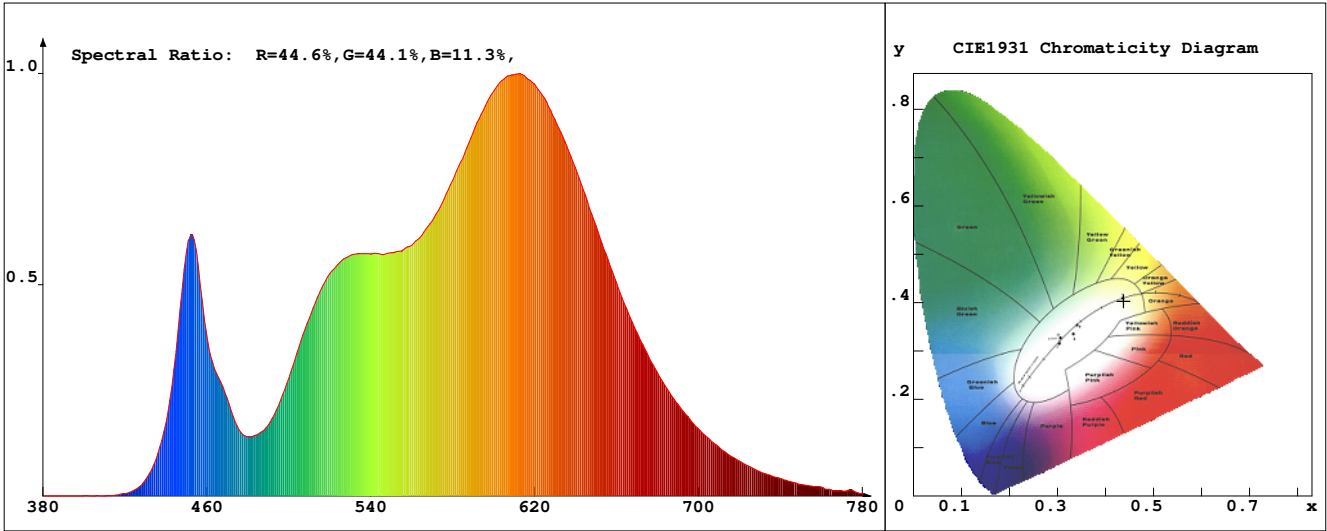


LED Test Report

Product Mark

Product Type : OR300-F52-3200R1-W6-S1 Manufacturer : -
 Temperature : 'C Humidity : -%
 Operator : - Test Date : 2025-02-12
 Remark :



Chroma Parameters

Chro.Coord.:x=0.4374 y=0.4031 u=0.2513 v=0.3474 duv=-0.0004
 CCT: 2984K Dominant Wave.:583.0nm Purity:52.3% Centre Wave:587.7nm
 Flux RGB Ratio:R=23.4%,G=75.1%,B=1.5% Peak Wave:611.6nm Half Width:143.2nm

Rendering Index:Ra= 88.8 CRI= 85.7

| | | | | | | | |
|-----------------------------|--------|--------|-----------------------|--------|--------|-----------------------|--------|
| R1 =89 | R2 =93 | R3 =97 | R4 =93 | R5 =91 | R6 =93 | R7 =86 | R8 =69 |
| R9 =31 | R10=84 | R11=95 | R12=74 | R13=90 | R14=97 | R15=81 | |
| PPF:8.952umol/s (400-700nm) | | | PRF:1.9mW (400-700nm) | | | PAR:1.6mW (400-700nm) | |

Photo Parameters

Flux:638.23lm Effi.:101.4lm/W Radiant:1904.4mW Iv:0.0mcd
 Scotopic Flux:878.7Plm Effi.:0.0Plm/W S/P:1.4
 Efficiency:0.00 Effi Level:A++ (EU 874-2012) Photon Flux:9280.040umol/s (380-780nm)

Ele. Parameters

Forward Current:If=523.0mA Reverse Voltage:Vr=5.00V
 Forward Voltage:Vf=12.04V Reverse Current:Ir=0.00uA
 Power:P=6.301W

Instrument state

Instrument:Lisun LMS-8000 Integral Time: 264.436ms VPeak: 13640
 VDark: 1223 Scan Range: 380-780nm Product ID: 201508924

IES TM-30-2015 Test Report

Product Mark

Product Type : OR300-F52-3200R1-W6-S1

Manufacturer : -

Temperature : 'C

Humidity : -%

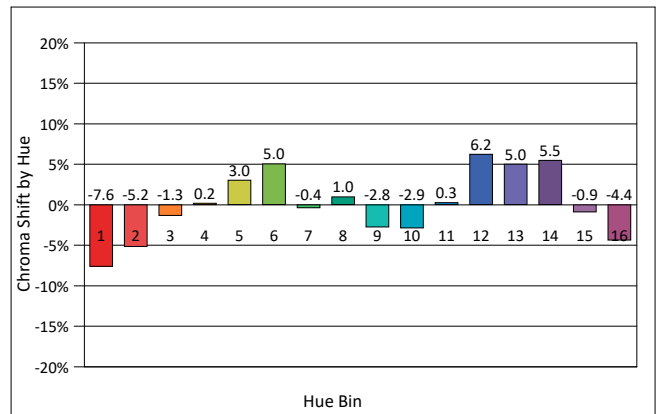
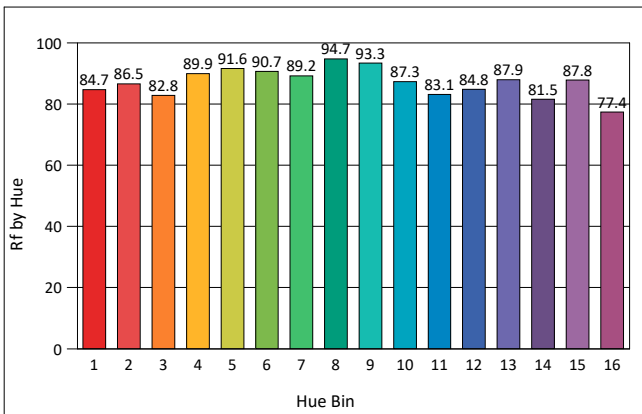
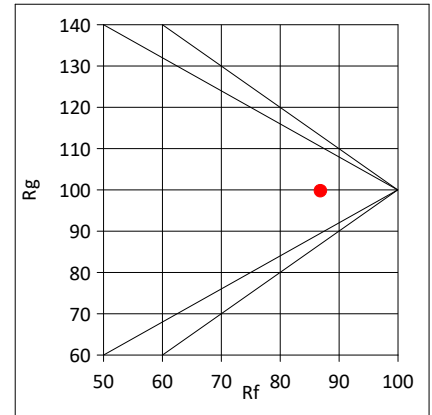
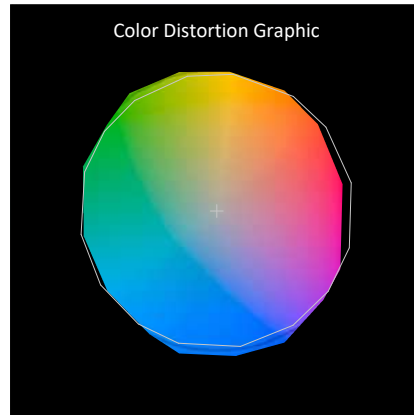
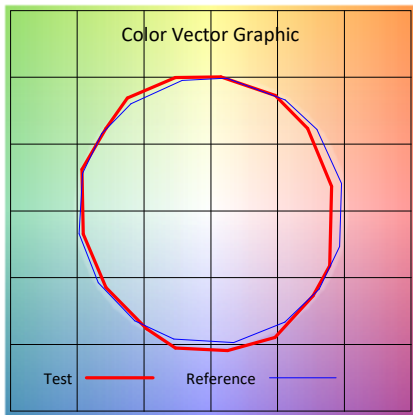
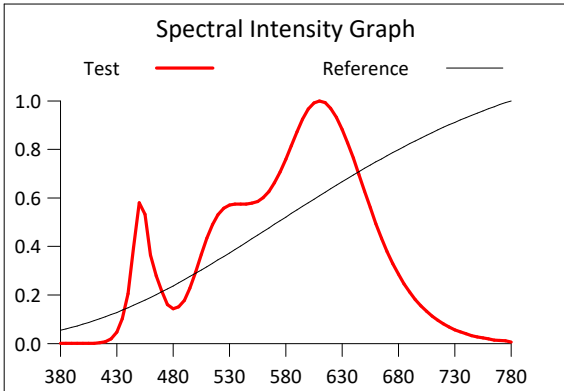
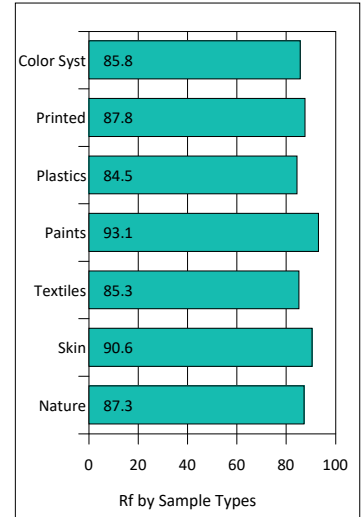
Operator : -

Test Date : 2025-02-12

Remark :

Rf: 86.9 CCT(K): 2984 u': 0.2513
 Rg: 99.7 LER: 322.6 Duv: -0.0004 v': 0.3474

| Hue Bin | Rf | Graphic Shifts (%) | |
|---------|------|--------------------|--------|
| | | Chroma | Hue |
| 1 | 84.7 | -7.6% | -0.7% |
| 2 | 86.5 | -5.2% | 4.5% |
| 3 | 82.8 | -1.3% | 7.9% |
| 4 | 89.9 | 0.2% | 4.4% |
| 5 | 91.6 | 3.0% | 4.5% |
| 6 | 90.7 | 5.0% | -0.2% |
| 7 | 89.2 | -0.4% | -4.9% |
| 8 | 94.7 | 1.0% | -2.8% |
| 9 | 93.3 | -2.8% | 0.9% |
| 10 | 87.3 | -2.9% | 6.2% |
| 11 | 83.1 | 0.3% | 10.7% |
| 12 | 84.8 | 6.2% | 2.6% |
| 13 | 87.9 | 5.0% | -5.7% |
| 14 | 81.5 | 5.5% | -12.4% |
| 15 | 87.8 | -0.9% | -6.7% |
| 16 | 77.4 | -4.4% | -15.6% |



IES TM-30-2015 Test Report

Product Mark

Product Type : OR300-F52-3200R1-W6-S1

Manufacturer : -

Temperature : 'C

Humidity : -%

Operator : -

Test Date : 2025-02-12

Remark :

